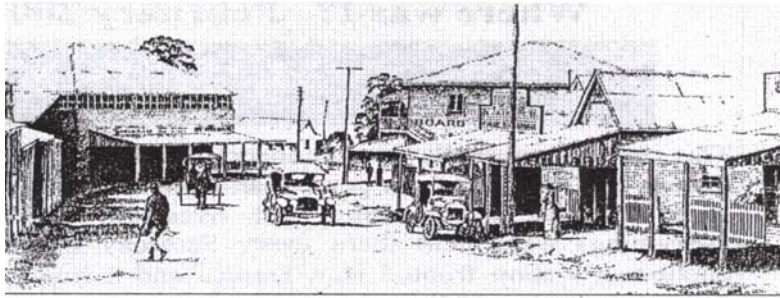


# Wynnum Manly Historical Society Inc.

ABN 49 071 835 845



Cambridge Parade Manly Circa 1920

## Newsletter

No 31

ISSN 1835-8500

April 2011

### FROM THE EDITOR

*Sandy Liddle*

What a wonderful day we had on our last heritage bus tour to Tamborine Mountain. I managed to catch up very briefly at morning tea with some old friends who now live up at Tamborine. Speaking of the morning tea, a huge thank you must go out to everyone who contributed towards this. What a spread! It was truly wonderful.

The next heritage bus tour is now in the planning stages and further details will be forthcoming in the next newsletter. It is taking place on 25 June so mark this date in your calendar.

April sees us commemorating Anzac Day. Last month's excellent Kokoda Track presentation by Major Chad Sherrin was a perfect lead up to Anzac Day.

I am amazed every year when I attend the Anzac Day dawn service at Wynnum RSL just how many more people show up including the younger generation. It is wonderful to see. I also watched with interest a recent television report about the recovery of many glass negatives which were found in an attic in France. Many of these negatives contained images of our WW1 diggers. There is a project underway at present to try to put names to the diggers whose images have been captured.

Thank you to both Les Greenhill and Alan Monaghan for providing articles for this month's newsletter.

Until next month.

### IN THIS ISSUE

|  |       |
|--|-------|
| April meeting details                                | 1     |
| From the Editor                                      | 1     |
| Committee contact details                            | 2     |
| Volunteers and Helpers                               | 2     |
| 2011 Supper roster                                   | 3     |
| President's Report                                   | 3     |
| News from the Resource Centre                        | 4     |
| Where was I?   | 5     |
| Where am I?  | 5     |
| Bounteous dinners                                    | 6     |
| The local bus service                                | 7-8   |
| Query regarding Lota Wetlands                        | 9     |
| The history behind (and the recipe for) Eccles Cakes | 10-11 |
| Announcements  | 12    |
| Minutes from March 2011 meeting                      | 13    |
| Resources held and for sale                          | 14    |
| Upcoming WMHS events                                 | 15    |
| Upcoming other events of interest                    | 16    |

### APRIL MEETING DETAILS

Thursday 21 April at 7.30pm

#### GENERAL MEETING

*Ambulance Museum Auditorium  
(Cnr Cedar Street & Tingal Road, Wynnum)*

Speaker: *Neil Bishop*  
Topic: **The Capuchin Friars**

Speaker: *Andrew Ensbey*  
Topic: **Upgrade of the Lota Camping Reserve**

**Gold coin entry** – covers hire of venue and Supper.

**Raffle:** This month's raffle prize will remain a mystery until meeting night.



**Tickets are only \$1.00 each or 3 for \$2.00.**

**Bring and buy stall** - Please bring your unwanted gifts, cakes, fruit, vegetables, plants, etc to a meeting or leave at the Resource Centre. . All proceeds from this stall go to support the Resource Centre.

Appreciation to **Daphne Liddle, Laurima Rabe and Alison Roff** for providing your supper this month.

## 2011/12 COMMITTEE MEMBERS

|                          |   |                           |                        |
|--------------------------|---|---------------------------|------------------------|
| President:               | Brian Brandenburg   | 3396 5760                 | president@wmhs.org.au  |
| Vice President:          | Jan Parnell   | 3396 6001                 |                        |
| Secretary:               | Lena McCreadie  | 3393 4393                 | secretary@wmhs.org.au  |
| Treasurer:               | Sandy Liddle  | 3207 4467                 | treasurer@wmhs.org.au  |
| Librarian:               | Jill Greenhill  | 3393 3208                 | library@wmhs.org.au    |
| Events Coordinator:      | Myrtle Beitz  | 3396 4711                 | events@wmhs.org.au     |
| Membership Secretary:    | Noela Stratton  | 3396 0069                 | membership@wmhs.org.au |
| Newsletter Editor:       | Sandy Liddle  | 3207 4467                 | newsletter@wmhs.org.au |
| Supper coordinator:      | Deborah Tearle  | 3396 9697                 | supper@wmhs.org.au     |
| Committee members:       | Anne Hall<br>John Coupland  | 0412 634 569<br>3899 1326 |                        |
| <b>Life Members:</b>     | Myrtle Beitz, John Davies, Jack Sands, Jill Greenhill, Noela Stratton |                           |                        |
| <b>Late life member:</b> | Merv Beitz  |                           |                        |
| <b>Patrons:</b>          | Cr. Peter Cumming<br>Paul Lucas MP.                                   |                           |                        |

## REGULAR SOCIETY VOLUNTEERS AND HELPERS

|                          |                                      |   |
|--------------------------|--------------------------------------|---|
| <b>GENERAL MEETINGS:</b> | <i>Afternoon set up:</i>             | Col Brown, John McIntyre, Jill Greenhill and Myrtle Beitz   |
|                          | <i>Welcome at Door and raffles:</i>  | Ian Wheeler & Anne Hall   |
|                          | <i>Bring and buy:</i>                | Jan Aplin and Carmel Henderson  |
|                          | <i>Kitchen Coordinator:</i>          | Margaret Mack   |
|                          | <i>Supper Coordinator:</i>           | Deborah Tearle  |
|                          | <i>Supper Donations and servers:</i> | Betty Powell, Jan Aplin, Jan Bird, Margaret O'Neil, Myrtle Beitz, Irene Morgan, Sherley Williams, Lena McCreadie, Shirley Houghton, Ellen Coupland, Dawn Wilkins, Betty Mottram, Ian Wheeler, Lyla Feige, Sandy Liddle, Laurima Rabe, Minnie Bowman, Noela Stratton, Beth Hume, Eris Powell, Daphne Liddle, Nena Robertson, Alison Roff, Jan Parnell, Margaret Collins, Deborah Tearle, Lyn Shanks, Shirley Jeffries, Thelma Crouch, Carol Astill, Ann Wenzel, Wave Oehlmann, Lou & Anne Hall |
|                          | <i>Raffle prizes:</i>                | Sandra Wheeler  |
|                          | <i>Speaker Coordinator:</i>          | Myrtle Beitz  |
| <b>NEWSLETTERS:</b>      | <i>Compiler &amp; Editor:</i>        | Sandy Liddle  |
|                          | <i>Printing:</i>                     | Ian Wheeler   |
|                          | <i>Delivery Coordinator:</i>         | Noela Stratton  |
|                          | <i>Delivery persons:</i>             | Ian Kennedy, Nena Robertson, John McIntyre, Minnie Bowman, Jill Greenhill, Sherley Williams, Eris Powell, Margaret Mack, Glenn Rolfe, Sue Laakso, Lena McCreadie, Myrtle Beitz, Jan Bird, Jack Sands  |
| <b>RESOURCE CENTRE:</b>  | <i>Volunteers on duty:</i>           | Minnie Bowman, Ian Wheeler, Sherley Williams, Ian Kennedy, John McIntyre, Brian Brandenburg, Noela Stratton, Dennis O'Neill, Col Brown, Myrtle Beitz, Dawn Wilkins, Jan Aplin   |
|                          | <i>Information Sources:</i>          | Lloyd Kelk, Jack Sands and Kate Harbison  |
| <b>TOURS:</b>            | <i>Planning &amp; Coordination:</i>  | Brian Brandenburg and Jan Parnell   |
|                          | <i>Booklet:</i>                      | Jill Greenhill  |
|                          | <i>Bookings:</i>                     | Sandy Liddle at General Meetings<br>Resource Centre staff each weekday  |
| <b>ORAL HISTORY:</b>     |                                      | Brian Brandenburg   |

*Can you help in any way? If so, please let us know. We are always looking for willing members to help in any way possible.*

## 2011 SUPPER ROSTER

Below is the 2011 supper roster.

|                 |   |  |                   |   |                                     |
|-----------------|---|--|-------------------|---|-------------------------------------|
| <b>APRIL:</b>   | Daphne Liddle<br>Laurima Rabe<br>Alison Roff        | 3396 8921<br>3348 8037<br>3396 7094    | <b>MAY:</b>       | Noela Stratton<br>Sherley Williams<br>Lyla Feige    | 3396 0069<br>3396 0084<br>3396 2147 |
| <b>JUNE:</b>    | Sandy Liddle<br>Jan Parnell<br>Deborah Tearle       | 3207 4467<br>3396 6001<br>3396 9697    | <b>JULY:</b>      | Minnie Bowman<br>Nina Robertson<br>Shirley Jeffries | 3893 0527<br>3396 2524<br>3893 1101 |
| <b>AUGUST:</b>  | Lyn Shanks<br>Jan Bird<br>Carol Astill              | 3396 3792<br>3396 6690<br>3396 5481    | <b>SEPTEMBER:</b> | Jan Aplin<br>Ann Wenzel<br>Wave Oehlmann            | 3396 4728<br>3399 5175<br>3393 3445 |
| <b>OCTOBER:</b> | Lou & Anne Hall<br>Lena McCreadie<br>Ellen Coupland | 0412 634 587<br>3393 4393<br>3899 1326 | <b>NOVEMBER:</b>  | Myrtle Beitz<br>Margaret O'Neil<br>Deborah Tearle   | 3396 4711<br>3348 3123<br>3396 9697 |

If you would like to volunteer to help out on supper roster or would like to swap your assigned roster month to another one, please contact **Deborah** on **3396 9697**.

Your assistance is appreciated.

**MANY HANDS MAKE LIGHT WORK**

*Deborah Tearle, Supper Coordinator*



### FROM THE PRESIDENT

It is good to be back after my travels in Vietnam. I am looking forward to being President for another term. Thanks to Jan Parnell for conducting the General Meeting in March. I would also like to welcome John Coupland as a new member of the Committee. Also thanks to continuing members who put in so much work into making the WMHS a successful organisation

At the April Committee meeting a number of subjects were discussed. Myrtle Beitz has done a wonderful job organizing speakers. Andrew Ensbey, the Brisbane City Council, Parks Project Manager, will talk about the design of the Lota Park or "Lota Camping Ground" as it is to be called. I attended the initial meeting where design plans were floated. Members of the WMHS who were there emphasized that the Park should not lose its character as an open area. Also that the trees should not be removed. I am told exciting things are happening, which include a Children's Castle and a walkway over to Bart's Fish and Chip Shop. No doubt Andrew will give us an up to date picture.

Another speaker, who will give a spot talk in May, is Margaret Dakin. Margaret has written a play entitled "Presumed Guilty" which is a true story about the only woman to be hung in Queensland. It is a well written play and is to be performed at the Wynnum Municipal on Saturday 4<sup>th</sup> June. There will be a matinee and evening performance. I also have a part in the play. More about this event in the next newsletter.

Plans are underway for the next Coach trip. In the morning we will visit "The Mercy Heritage Centre" in the grounds of All Hallows Convent in Fortitude Valley. The tour will take about two hours and include morning tea. More details of the trip will be provided in the next newsletter.

As previously mentioned we have been given a grant to purchase digital recording equipment. The equipment which we now have, is to be used for a project entitled "From Slates to Ipads". I would very much like to hear from members who attended local schools and would be willing to be interviewed about their school days. I know many people have tales to tell about what school was like in their era. So don't keep them to yourself, tell them. The stories collected will be useful and will provide a record to what life was like in the local area. Also people who may have attended schools outside the Wynnum/Manly area. These stories are also welcome.

Finally I would like to talk a little about my trip to Vietnam. This country has a history which stretches back over a thousand years. I visited temples and pagodas and churches. Each building had a story to tell. In Central Vietnam I visited the ruins of "Cham" pagodas. The "Cham" were a Hindu influenced culture that existed for a thousand years. In the South I climbed the hundreds of stairs to reach the statue of Christ and climbed up further stairs to read his outstretched arms. In the North I visited Confucian temples, which reflected the Chinese influence on Vietnam. At a temple in an insignificant village I was told it was the birthplace of General Tran Hung Dao, who in 1288 defeated Kublai Khan and the Mongols. The lesson I learnt is - History is its people and the buildings they were associated with. We should not forget this when we seek to preserve our own rich heritage.

**Brian Brandenburg, President**



**Resource Centre  
address**

**Civic Centre  
Shop 7, 66 Bay Tce  
Wynnum**

(outside entrance to Wynnum  
Public Library)

**Resource Centre opening  
hours**

**Monday – Friday**  
(except Public Holidays)

**10am – 12 noon**

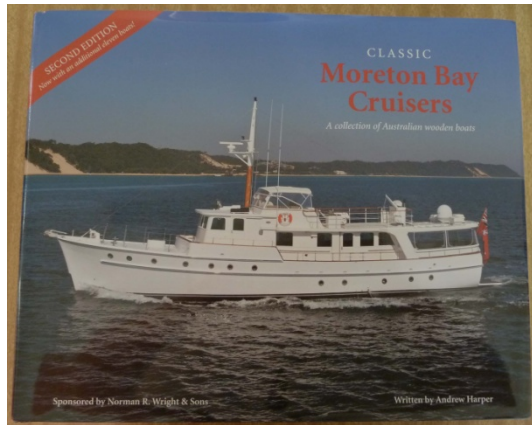
- *A donation to the Society*



Does anyone remember the old house in Wondall Road, opposite the junction with Radford Road?

Ken Frazer of Morningside, gave us his painting of the cottage, requesting that the picture remain in Wynnum. We have found a place for the picture to hang – in the parlour of the Shire Clerk's cottage.

- *A donation from the publishers.*



Many thanks to committee member, Anne Hall for contacting the publishers and obtaining for us, a free copy of:

“Classic Moreton Bay Cruisers”  
A collection of Australian wooden  
boats.

Sponsored by Norman R Wright and  
Sons.

Written by Andrew Harper.

The book will be on the back table at  
the next General Meeting.

- *The trees along Memorial Avenue, through Wynnum High School.*

The school is upgrading its grounds and a member of the staff, came to the Historical Society for the history of the Avenue. More trees are being planted and all the trees are being named. The original trees were hoop pines (*Araucaria cunninghamii*) and cocos palms (*Syagrus romanzoffiana*), planted in 1920 in Russell Park, along an avenue linking Peel Street and Andrew Street. The park was re-named Memorial Park. In the early 1940's the State Government exchanged a parcel of land at Primrose Hill for a large portion of Memorial Park on which was built Wynnum High School and Intermediate School.

- *Local bus service*

Alan Monaghan's father, Andrew, operated the bus services between Lota and Wynnum North from 1950's to 1970's. Alan has written the story of the bus company, which appears in this newsletter, together with photographs of some of the bus fleet. Thank you Alan.

- *Soldiers' concerts*

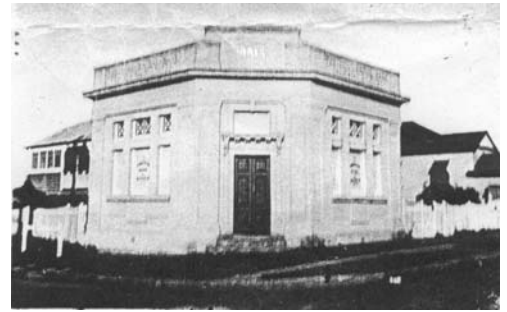
Towards the end of 1944, concerts were held on Sunday evenings after the church services in the area of the Barnes Memorial opposite the Pelican's Nest. The concerts were then moved to the School of Arts in Bay Terrace. They were rather controversial as they were held on Sunday. Peter Hughes would like to know who organised these concerts.

Till next time, Jill Greenhill  
Librarian



St Mary's Hospital stood on the corner of Bay Terrace and Edith Street in the early 1920s.

The Commercial Bank of Australia was built in front of St Mary's Hospital later in the 1920s.



The Bank was demolished in 1967 and rebuilt, opening in 1968 as the building on the corner today



The Commercial Bank closed in 1984 after which the building was used for Real Estate Sales.

Ian Fry, Solicitors, has occupied the building since.



Jill Greenhill,  
Librarian



Although he looked ancient, he always walked with vigour of a young man with a purpose - there was something needing his urgent attention. On Sundays, carrying a large shoulder bag and a tripod, he trudged the streets of our suburb. We knew him only as 'Dirty George'.

George was one of the many fringe-dwellers, who lived in the Bayside suburbs in the late 1930's. If he was asked his profession, he would say: "Photographer Extraordinary". George was never a shrinking violet. Unkempt by nature, dressed in loose-fitting clothes, which draped his figure like the hanging folds of skin on a pachyderm on a 'Weight-Watcher Diet'. A battered, grease stained hat kept his unruly thin grey hair in place. His wrinkled countenance was speckled with many blackheads and every wrinkle on his face was indelibly etched with dirt. His title "Dirty George" was a perfect appellation. Among his many theories was that washing one's body was unhealthy.

When George arrived at Grandfather's house, he would ask my grandparents: "Do you want any pictures taken today, Mrs Feige?" "Not today, Thank you, George." She would answer.

Immediately, he would make himself comfortable and begin long discussions on a multitude of topics. He had theories about almost every topic under the sun. The weather, tides, history, the future were his favourite topics. I believe he was a combination of clairvoyant, magician and hoaxer of those times. As children we breathlessly dwelled on every word he uttered. Old George told us of huge valleys scoured out of high mountains by strong winds caused by the forces of Earth's revolution. He had a rudimentary theory on matter and was convinced the future held great promise.

While Grandma busied herself cooking the Sunday dinner, George would discuss a variety of profound topics with the rest of the family. Eventually, one of my aunts would come out on to the verandah to break up the conversation. "George! Your timing is perfect. Would you like to stay for dinner?"

In an effusive display of refusal combined with reluctant acceptance, Old George made sure his feet were firmly planted under the kitchen table. Those meals were memorable, because Grandma was the best cook in my world. George would fall silent to scoff down his food. Soon after, he could excuse himself to resume his predatory search for more Sunday fare.

In those times when photography was seen as some form of magic and besides, the price of a camera was beyond the means of almost everyone, George would be asked to take some family photographs.

I have several family photos in which my family stand in set rows solemnly squinting against a strong sun. The photographer extraordinary would become a mincing maestro conducting the event. First, while making sure he told us he personally ground his camera lens, he would set the huge box camera on his homemade tripod. With a black cloth draped over his head he would then focus the lens. Next, he would extract his homemade glass negatives from a special box. Finally, with great flourish, he eventually took the photo. He shouted: "Look this way! Bang She Goes! Bang She Goes!"

A week or two later, he would arrive on the doorstep with the photos. I never ever found out if he paid taxes or gave discounts for the lunches.

After grandfather died, George faded into my past memories. Many years later, local rumour said that he was found dead in his squalid camp behind the Manly School. The truth was that he died in a hospital on October 26<sup>th</sup> 1960. George had an accident and was taken to the General Hospital, then transferred to Goodna. As he was not a mental patient, he was moved to Wondai Hospital where he died.

Often, I remember him when I look at the testimony of his work - faded photographs in the old family album.

In about 1950, Andrew (Drew) Monaghan bought the Local Bus Service from the Beaumont family. It was in a rundown state and very few people were using it. There was only the one bus - a 1942 Chev that used to breakdown all the time and one time it caught on fire. The motor on the bus was so 'had it' that Drew carried a change of spark plugs soaked in petrol to change them at the end of each trip as the other ones became so oiled up.

Drew was well known as he had been driving the Black and White Buses for a few years. Everyone called him Monty and he always worked with his driver's cap on.

In the early years the bus service was operated from the Lota Service Station which was owned by Norm Dunn and from Mick Cross's place on the corner of Allister St and Belgamba St.

As the business grew, other buses were bought from Greyhound bus service and Brisbane City Council. About 1954 the Local Bus Service was moved to 108 Whites Road Manly where the family home and bus sheds were built on 3 acres of land, where the Aveo Retirement Village now stands.

Drew took over the Abattoir "Red and Silver" buses from Bob Carmichael and then ran buses to the Brisbane Abattoir, Borthwick's, Gibson Island power house, Darling Downs Bacon factory and Dandy Bacon factory. The Local Bus Service ran to the local picture theatres - 'Strand' at Manly, 'Imperial' on the beach at Wynnum, and the 'Star' in Florence St on a Friday and Saturday nights. The buses were always packed as very few people had their own car.

Local buses ran from Coolana (or Ferndale) Street, Lota to Wynnum North and from Coolana St to Lindum Station. They did 8 trips each day and both buses ran through the Cambridge Pde Manly and Bay Terrace Wynnum Central shopping centres.

The Local Bus Service supplied the buses for all the schools in the area for their swimming trips to the Manly Baths and other sporting fixtures. Local Buses were also used to take Wynnum Manly Rugby League supporters to the various venues for their 'away' matches. Local Buses also ran to the Hemmant Cemetery every Sunday. Two new buses were built for charter work and were very well patronised.

Over the years a total of 15 buses worked out of 108 Whites Road. All the buses were serviced and maintained by the Driver Mechanics led by Drew of course. Some of the people who worked for Drew include Allan White, Harry Robb, Mick Cross, Bill McFarlane, Hugh Cameron and Doug Cochrane. All the older buses were hand-painted even though you would never pick it. The fleet of buses were petrol driven, with the exception of an AEC diesel bought in later years from Brisbane City Council. Drew's sons, Brian and Alan had to work cleaning the buses after school, filling them with petrol, cleaning and 'off siding' or working on them all hours of the night.

The Local Bus Service was sold to Bayside Buses in 1971 and the property was sold at a later date.



One of the first Monaghan buses - early 1950s.

A bus of the late 1950s





1960s The "Snout" has disappeared from the front of the bus

A model specially built for Monaghan's in the 1960s



The final coach built in the late 1960s, designed for outings and day trips.

Three local services ran from Lota to Lindum and Wynnum North, taking different routes.

However all buses passed through Cambridge Parade, Manly and Bay Terrace, Wynnum.

| Local Bus Service Time Table<br>OCTOBER 1970   |                     |                     |      |      |      |      |      |      |      |       |       |       |       |             |      |      |      |      |      |      |      |       |      |      |      |      |      |       |       |       |   |             |               |      |      |      |        |      |         |       |        |      |      |      |       |      |       |      |       |      |      |      |      |       |       |   |             |                     |      |      |      |      |      |       |       |       |      |      |      |      |      |      |      |      |      |       |       |       |
|--|---------------------|---------------------|------|------|------|------|------|------|------|-------|-------|-------|-------|-------------|------|------|------|------|------|------|------|-------|------|------|------|------|------|-------|-------|-------|---|-------------|---------------|------|------|------|--------|------|---------|-------|--------|------|------|------|-------|------|-------|------|-------|------|------|------|------|-------|-------|---|-------------|---------------------|------|------|------|------|------|-------|-------|-------|------|------|------|------|------|------|------|------|------|-------|-------|-------|
| <p><b>LOTA TO WYNNUM NORTH</b><br/> <small>Commencing corner Bay Terrace and Fernside Street, Lindum, Manly P.D., Kingsgate Terrace, Wynnum Central, Wynnum North School, Lagoon Road, Wynnum North Road, Hornum Street, Lindum Street, Claymade Street, Selma Street, Shirley Terrace, Rossett Street.</small></p> <p><b>MONDAY TO FRIDAY</b></p> <table border="0"> <tr> <td>Depart Lota</td> <td>Depart Wynnum North</td> </tr> <tr> <td>a.m.</td> <td>a.m.</td> </tr> <tr> <td>7.35</td> <td>8.00</td> </tr> <tr> <td>8.35</td> <td>8.50</td> </tr> <tr> <td>9.25</td> <td>10.00</td> </tr> <tr> <td>10.30</td> <td>11.00</td> </tr> <tr> <td>11.30</td> <td>*12.00 noon</td> </tr> <tr> <td>p.m.</td> <td>p.m.</td> </tr> <tr> <td>1.30</td> <td>1.55</td> </tr> <tr> <td>2.30</td> <td>2.55</td> </tr> <tr> <td>3.30</td> <td>*4.35</td> </tr> </table> <p><b>SATURDAY ONLY</b></p> <table border="0"> <tr> <td>a.m.</td> <td>a.m.</td> </tr> <tr> <td>8.30</td> <td>9.15</td> </tr> <tr> <td>9.25</td> <td>10.00</td> </tr> <tr> <td>10.25</td> <td>11.20</td> </tr> </table> <p><small>*Denotes Bus to Depart Whites Road Passengers Whites Road</small></p> | Depart Lota         | Depart Wynnum North | a.m. | a.m. | 7.35 | 8.00 | 8.35 | 8.50 | 9.25 | 10.00 | 10.30 | 11.00 | 11.30 | *12.00 noon | p.m. | p.m. | 1.30 | 1.55 | 2.30 | 2.55 | 3.30 | *4.35 | a.m. | a.m. | 8.30 | 9.15 | 9.25 | 10.00 | 10.25 | 11.20 | <p><b>LOTA TO LINDUM</b><br/> <small>via Whites Road, Haylock Street and Wynnum Central</small></p> <p><b>MONDAY TO FRIDAY</b></p> <table border="0"> <tr> <td>Depart Lota</td> <td>Depart Lindum</td> </tr> <tr> <td>a.m.</td> <td>a.m.</td> </tr> <tr> <td>8.30</td> <td>* 9.00</td> </tr> <tr> <td>9.25</td> <td>* 10.15</td> </tr> <tr> <td>11.10</td> <td>*11.45</td> </tr> <tr> <td>p.m.</td> <td>p.m.</td> </tr> <tr> <td>1.00</td> <td>*1.40</td> </tr> <tr> <td>2.15</td> <td>*3.00</td> </tr> <tr> <td>3.30</td> <td>*4.00</td> </tr> </table> <p><b>SATURDAY ONLY</b></p> <table border="0"> <tr> <td>a.m.</td> <td>a.m.</td> </tr> <tr> <td>8.30</td> <td>9.15</td> </tr> <tr> <td>11.15</td> <td>11.45</td> </tr> </table> <p><small>*Denotes Evelyn Road Terminus</small></p> | Depart Lota | Depart Lindum | a.m. | a.m. | 8.30 | * 9.00 | 9.25 | * 10.15 | 11.10 | *11.45 | p.m. | p.m. | 1.00 | *1.40 | 2.15 | *3.00 | 3.30 | *4.00 | a.m. | a.m. | 8.30 | 9.15 | 11.15 | 11.45 | <p><b>LOTA TO WYNNUM NORTH</b><br/> <small>via Manly Road Housing Estate, Commencing Railway Terrace, Andrew Street, Wilfred Street, Villiers Street, Hordley Street, Greta Street, Manly Road, Manly P.D., Rowell Terrace, Wynnum Central, Wynnum North.</small></p> <p><b>MONDAY TO FRIDAY</b></p> <table border="0"> <tr> <td>Depart Lota</td> <td>Depart Wynnum North</td> </tr> <tr> <td>a.m.</td> <td>a.m.</td> </tr> <tr> <td>8.45</td> <td>9.15</td> </tr> <tr> <td>9.45</td> <td>10.15</td> </tr> <tr> <td>11.00</td> <td>11.40</td> </tr> <tr> <td>p.m.</td> <td>p.m.</td> </tr> <tr> <td>1.00</td> <td>1.30</td> </tr> </table> <p><b>SATURDAY ONLY</b></p> <table border="0"> <tr> <td>a.m.</td> <td>a.m.</td> </tr> <tr> <td>8.45</td> <td>9.15</td> </tr> <tr> <td>9.45</td> <td>10.15</td> </tr> <tr> <td>11.00</td> <td>11.40</td> </tr> </table> | Depart Lota | Depart Wynnum North | a.m. | a.m. | 8.45 | 9.15 | 9.45 | 10.15 | 11.00 | 11.40 | p.m. | p.m. | 1.00 | 1.30 | a.m. | a.m. | 8.45 | 9.15 | 9.45 | 10.15 | 11.00 | 11.40 |
| Depart Lota  | Depart Wynnum North |                     |      |      |      |      |      |      |      |       |       |       |       |             |      |      |      |      |      |      |      |       |      |      |      |      |      |       |       |       |   |             |               |      |      |      |        |      |         |       |        |      |      |      |       |      |       |      |       |      |      |      |      |       |       |   |             |                     |      |      |      |      |      |       |       |       |      |      |      |      |      |      |      |      |      |       |       |       |
| a.m.   | a.m.                |                     |      |      |      |      |      |      |      |       |       |       |       |             |      |      |      |      |      |      |      |       |      |      |      |      |      |       |       |       |   |             |               |      |      |      |        |      |         |       |        |      |      |      |       |      |       |      |       |      |      |      |      |       |       |   |             |                     |      |      |      |      |      |       |       |       |      |      |      |      |      |      |      |      |      |       |       |       |
| 7.35   | 8.00                |                     |      |      |      |      |      |      |      |       |       |       |       |             |      |      |      |      |      |      |      |       |      |      |      |      |      |       |       |       |   |             |               |      |      |      |        |      |         |       |        |      |      |      |       |      |       |      |       |      |      |      |      |       |       |   |             |                     |      |      |      |      |      |       |       |       |      |      |      |      |      |      |      |      |      |       |       |       |
| 8.35   | 8.50                |                     |      |      |      |      |      |      |      |       |       |       |       |             |      |      |      |      |      |      |      |       |      |      |      |      |      |       |       |       |   |             |               |      |      |      |        |      |         |       |        |      |      |      |       |      |       |      |       |      |      |      |      |       |       |   |             |                     |      |      |      |      |      |       |       |       |      |      |      |      |      |      |      |      |      |       |       |       |
| 9.25   | 10.00               |                     |      |      |      |      |      |      |      |       |       |       |       |             |      |      |      |      |      |      |      |       |      |      |      |      |      |       |       |       |   |             |               |      |      |      |        |      |         |       |        |      |      |      |       |      |       |      |       |      |      |      |      |       |       |   |             |                     |      |      |      |      |      |       |       |       |      |      |      |      |      |      |      |      |      |       |       |       |
| 10.30  | 11.00               |                     |      |      |      |      |      |      |      |       |       |       |       |             |      |      |      |      |      |      |      |       |      |      |      |      |      |       |       |       |   |             |               |      |      |      |        |      |         |       |        |      |      |      |       |      |       |      |       |      |      |      |      |       |       |   |             |                     |      |      |      |      |      |       |       |       |      |      |      |      |      |      |      |      |      |       |       |       |
| 11.30  | *12.00 noon         |                     |      |      |      |      |      |      |      |       |       |       |       |             |      |      |      |      |      |      |      |       |      |      |      |      |      |       |       |       |   |             |               |      |      |      |        |      |         |       |        |      |      |      |       |      |       |      |       |      |      |      |      |       |       |   |             |                     |      |      |      |      |      |       |       |       |      |      |      |      |      |      |      |      |      |       |       |       |
| p.m.   | p.m.                |                     |      |      |      |      |      |      |      |       |       |       |       |             |      |      |      |      |      |      |      |       |      |      |      |      |      |       |       |       |   |             |               |      |      |      |        |      |         |       |        |      |      |      |       |      |       |      |       |      |      |      |      |       |       |   |             |                     |      |      |      |      |      |       |       |       |      |      |      |      |      |      |      |      |      |       |       |       |
| 1.30   | 1.55                |                     |      |      |      |      |      |      |      |       |       |       |       |             |      |      |      |      |      |      |      |       |      |      |      |      |      |       |       |       |   |             |               |      |      |      |        |      |         |       |        |      |      |      |       |      |       |      |       |      |      |      |      |       |       |   |             |                     |      |      |      |      |      |       |       |       |      |      |      |      |      |      |      |      |      |       |       |       |
| 2.30   | 2.55                |                     |      |      |      |      |      |      |      |       |       |       |       |             |      |      |      |      |      |      |      |       |      |      |      |      |      |       |       |       |   |             |               |      |      |      |        |      |         |       |        |      |      |      |       |      |       |      |       |      |      |      |      |       |       |   |             |                     |      |      |      |      |      |       |       |       |      |      |      |      |      |      |      |      |      |       |       |       |
| 3.30   | *4.35               |                     |      |      |      |      |      |      |      |       |       |       |       |             |      |      |      |      |      |      |      |       |      |      |      |      |      |       |       |       |   |             |               |      |      |      |        |      |         |       |        |      |      |      |       |      |       |      |       |      |      |      |      |       |       |   |             |                     |      |      |      |      |      |       |       |       |      |      |      |      |      |      |      |      |      |       |       |       |
| a.m.   | a.m.                |                     |      |      |      |      |      |      |      |       |       |       |       |             |      |      |      |      |      |      |      |       |      |      |      |      |      |       |       |       |   |             |               |      |      |      |        |      |         |       |        |      |      |      |       |      |       |      |       |      |      |      |      |       |       |   |             |                     |      |      |      |      |      |       |       |       |      |      |      |      |      |      |      |      |      |       |       |       |
| 8.30   | 9.15                |                     |      |      |      |      |      |      |      |       |       |       |       |             |      |      |      |      |      |      |      |       |      |      |      |      |      |       |       |       |   |             |               |      |      |      |        |      |         |       |        |      |      |      |       |      |       |      |       |      |      |      |      |       |       |   |             |                     |      |      |      |      |      |       |       |       |      |      |      |      |      |      |      |      |      |       |       |       |
| 9.25   | 10.00               |                     |      |      |      |      |      |      |      |       |       |       |       |             |      |      |      |      |      |      |      |       |      |      |      |      |      |       |       |       |   |             |               |      |      |      |        |      |         |       |        |      |      |      |       |      |       |      |       |      |      |      |      |       |       |   |             |                     |      |      |      |      |      |       |       |       |      |      |      |      |      |      |      |      |      |       |       |       |
| 10.25  | 11.20               |                     |      |      |      |      |      |      |      |       |       |       |       |             |      |      |      |      |      |      |      |       |      |      |      |      |      |       |       |       |   |             |               |      |      |      |        |      |         |       |        |      |      |      |       |      |       |      |       |      |      |      |      |       |       |   |             |                     |      |      |      |      |      |       |       |       |      |      |      |      |      |      |      |      |      |       |       |       |
| Depart Lota  | Depart Lindum       |                     |      |      |      |      |      |      |      |       |       |       |       |             |      |      |      |      |      |      |      |       |      |      |      |      |      |       |       |       |   |             |               |      |      |      |        |      |         |       |        |      |      |      |       |      |       |      |       |      |      |      |      |       |       |   |             |                     |      |      |      |      |      |       |       |       |      |      |      |      |      |      |      |      |      |       |       |       |
| a.m.   | a.m.                |                     |      |      |      |      |      |      |      |       |       |       |       |             |      |      |      |      |      |      |      |       |      |      |      |      |      |       |       |       |   |             |               |      |      |      |        |      |         |       |        |      |      |      |       |      |       |      |       |      |      |      |      |       |       |   |             |                     |      |      |      |      |      |       |       |       |      |      |      |      |      |      |      |      |      |       |       |       |
| 8.30   | * 9.00              |                     |      |      |      |      |      |      |      |       |       |       |       |             |      |      |      |      |      |      |      |       |      |      |      |      |      |       |       |       |   |             |               |      |      |      |        |      |         |       |        |      |      |      |       |      |       |      |       |      |      |      |      |       |       |   |             |                     |      |      |      |      |      |       |       |       |      |      |      |      |      |      |      |      |      |       |       |       |
| 9.25   | * 10.15             |                     |      |      |      |      |      |      |      |       |       |       |       |             |      |      |      |      |      |      |      |       |      |      |      |      |      |       |       |       |   |             |               |      |      |      |        |      |         |       |        |      |      |      |       |      |       |      |       |      |      |      |      |       |       |   |             |                     |      |      |      |      |      |       |       |       |      |      |      |      |      |      |      |      |      |       |       |       |
| 11.10  | *11.45              |                     |      |      |      |      |      |      |      |       |       |       |       |             |      |      |      |      |      |      |      |       |      |      |      |      |      |       |       |       |   |             |               |      |      |      |        |      |         |       |        |      |      |      |       |      |       |      |       |      |      |      |      |       |       |   |             |                     |      |      |      |      |      |       |       |       |      |      |      |      |      |      |      |      |      |       |       |       |
| p.m.   | p.m.                |                     |      |      |      |      |      |      |      |       |       |       |       |             |      |      |      |      |      |      |      |       |      |      |      |      |      |       |       |       |   |             |               |      |      |      |        |      |         |       |        |      |      |      |       |      |       |      |       |      |      |      |      |       |       |   |             |                     |      |      |      |      |      |       |       |       |      |      |      |      |      |      |      |      |      |       |       |       |
| 1.00   | *1.40               |                     |      |      |      |      |      |      |      |       |       |       |       |             |      |      |      |      |      |      |      |       |      |      |      |      |      |       |       |       |   |             |               |      |      |      |        |      |         |       |        |      |      |      |       |      |       |      |       |      |      |      |      |       |       |   |             |                     |      |      |      |      |      |       |       |       |      |      |      |      |      |      |      |      |      |       |       |       |
| 2.15   | *3.00               |                     |      |      |      |      |      |      |      |       |       |       |       |             |      |      |      |      |      |      |      |       |      |      |      |      |      |       |       |       |   |             |               |      |      |      |        |      |         |       |        |      |      |      |       |      |       |      |       |      |      |      |      |       |       |   |             |                     |      |      |      |      |      |       |       |       |      |      |      |      |      |      |      |      |      |       |       |       |
| 3.30   | *4.00               |                     |      |      |      |      |      |      |      |       |       |       |       |             |      |      |      |      |      |      |      |       |      |      |      |      |      |       |       |       |   |             |               |      |      |      |        |      |         |       |        |      |      |      |       |      |       |      |       |      |      |      |      |       |       |   |             |                     |      |      |      |      |      |       |       |       |      |      |      |      |      |      |      |      |      |       |       |       |
| a.m.   | a.m.                |                     |      |      |      |      |      |      |      |       |       |       |       |             |      |      |      |      |      |      |      |       |      |      |      |      |      |       |       |       |   |             |               |      |      |      |        |      |         |       |        |      |      |      |       |      |       |      |       |      |      |      |      |       |       |   |             |                     |      |      |      |      |      |       |       |       |      |      |      |      |      |      |      |      |      |       |       |       |
| 8.30   | 9.15                |                     |      |      |      |      |      |      |      |       |       |       |       |             |      |      |      |      |      |      |      |       |      |      |      |      |      |       |       |       |   |             |               |      |      |      |        |      |         |       |        |      |      |      |       |      |       |      |       |      |      |      |      |       |       |   |             |                     |      |      |      |      |      |       |       |       |      |      |      |      |      |      |      |      |      |       |       |       |
| 11.15  | 11.45               |                     |      |      |      |      |      |      |      |       |       |       |       |             |      |      |      |      |      |      |      |       |      |      |      |      |      |       |       |       |   |             |               |      |      |      |        |      |         |       |        |      |      |      |       |      |       |      |       |      |      |      |      |       |       |   |             |                     |      |      |      |      |      |       |       |       |      |      |      |      |      |      |      |      |      |       |       |       |
| Depart Lota  | Depart Wynnum North |                     |      |      |      |      |      |      |      |       |       |       |       |             |      |      |      |      |      |      |      |       |      |      |      |      |      |       |       |       |   |             |               |      |      |      |        |      |         |       |        |      |      |      |       |      |       |      |       |      |      |      |      |       |       |   |             |                     |      |      |      |      |      |       |       |       |      |      |      |      |      |      |      |      |      |       |       |       |
| a.m.   | a.m.                |                     |      |      |      |      |      |      |      |       |       |       |       |             |      |      |      |      |      |      |      |       |      |      |      |      |      |       |       |       |   |             |               |      |      |      |        |      |         |       |        |      |      |      |       |      |       |      |       |      |      |      |      |       |       |   |             |                     |      |      |      |      |      |       |       |       |      |      |      |      |      |      |      |      |      |       |       |       |
| 8.45   | 9.15                |                     |      |      |      |      |      |      |      |       |       |       |       |             |      |      |      |      |      |      |      |       |      |      |      |      |      |       |       |       |   |             |               |      |      |      |        |      |         |       |        |      |      |      |       |      |       |      |       |      |      |      |      |       |       |   |             |                     |      |      |      |      |      |       |       |       |      |      |      |      |      |      |      |      |      |       |       |       |
| 9.45   | 10.15               |                     |      |      |      |      |      |      |      |       |       |       |       |             |      |      |      |      |      |      |      |       |      |      |      |      |      |       |       |       |   |             |               |      |      |      |        |      |         |       |        |      |      |      |       |      |       |      |       |      |      |      |      |       |       |   |             |                     |      |      |      |      |      |       |       |       |      |      |      |      |      |      |      |      |      |       |       |       |
| 11.00  | 11.40               |                     |      |      |      |      |      |      |      |       |       |       |       |             |      |      |      |      |      |      |      |       |      |      |      |      |      |       |       |       |   |             |               |      |      |      |        |      |         |       |        |      |      |      |       |      |       |      |       |      |      |      |      |       |       |   |             |                     |      |      |      |      |      |       |       |       |      |      |      |      |      |      |      |      |      |       |       |       |
| p.m.   | p.m.                |                     |      |      |      |      |      |      |      |       |       |       |       |             |      |      |      |      |      |      |      |       |      |      |      |      |      |       |       |       |   |             |               |      |      |      |        |      |         |       |        |      |      |      |       |      |       |      |       |      |      |      |      |       |       |   |             |                     |      |      |      |      |      |       |       |       |      |      |      |      |      |      |      |      |      |       |       |       |
| 1.00   | 1.30                |                     |      |      |      |      |      |      |      |       |       |       |       |             |      |      |      |      |      |      |      |       |      |      |      |      |      |       |       |       |   |             |               |      |      |      |        |      |         |       |        |      |      |      |       |      |       |      |       |      |      |      |      |       |       |   |             |                     |      |      |      |      |      |       |       |       |      |      |      |      |      |      |      |      |      |       |       |       |
| a.m.   | a.m.                |                     |      |      |      |      |      |      |      |       |       |       |       |             |      |      |      |      |      |      |      |       |      |      |      |      |      |       |       |       |   |             |               |      |      |      |        |      |         |       |        |      |      |      |       |      |       |      |       |      |      |      |      |       |       |   |             |                     |      |      |      |      |      |       |       |       |      |      |      |      |      |      |      |      |      |       |       |       |
| 8.45   | 9.15                |                     |      |      |      |      |      |      |      |       |       |       |       |             |      |      |      |      |      |      |      |       |      |      |      |      |      |       |       |       |   |             |               |      |      |      |        |      |         |       |        |      |      |      |       |      |       |      |       |      |      |      |      |       |       |   |             |                     |      |      |      |      |      |       |       |       |      |      |      |      |      |      |      |      |      |       |       |       |
| 9.45   | 10.15               |                     |      |      |      |      |      |      |      |       |       |       |       |             |      |      |      |      |      |      |      |       |      |      |      |      |      |       |       |       |   |             |               |      |      |      |        |      |         |       |        |      |      |      |       |      |       |      |       |      |      |      |      |       |       |   |             |                     |      |      |      |      |      |       |       |       |      |      |      |      |      |      |      |      |      |       |       |       |
| 11.00  | 11.40               |                     |      |      |      |      |      |      |      |       |       |       |       |             |      |      |      |      |      |      |      |       |      |      |      |      |      |       |       |       |   |             |               |      |      |      |        |      |         |       |        |      |      |      |       |      |       |      |       |      |      |      |      |       |       |   |             |                     |      |      |      |      |      |       |       |       |      |      |      |      |      |      |      |      |      |       |       |       |
| <p>Buses available for Charter, etc. Quotes A. J. MONAGHAN, Proprietor 108 Whites Road, Manly, 4179</p> <p><b>PHONE 96 1958</b></p>  |                     |                     |      |      |      |      |      |      |      |       |       |       |       |             |      |      |      |      |      |      |      |       |      |      |      |      |      |       |       |       |   |             |               |      |      |      |        |      |         |       |        |      |      |      |       |      |       |      |       |      |      |      |      |       |       |   |             |                     |      |      |      |      |      |       |       |       |      |      |      |      |      |      |      |      |      |       |       |       |

*Editor's comment: I can well remember the local buses in the late 1960s and early 1970s. Mr White was the usual driver on our local bus route. He used to pick us up outside our house in Greta Street, Manly, and we would trundle around the back streets of Manly and Wynnum before arriving in Wynnum Central.*



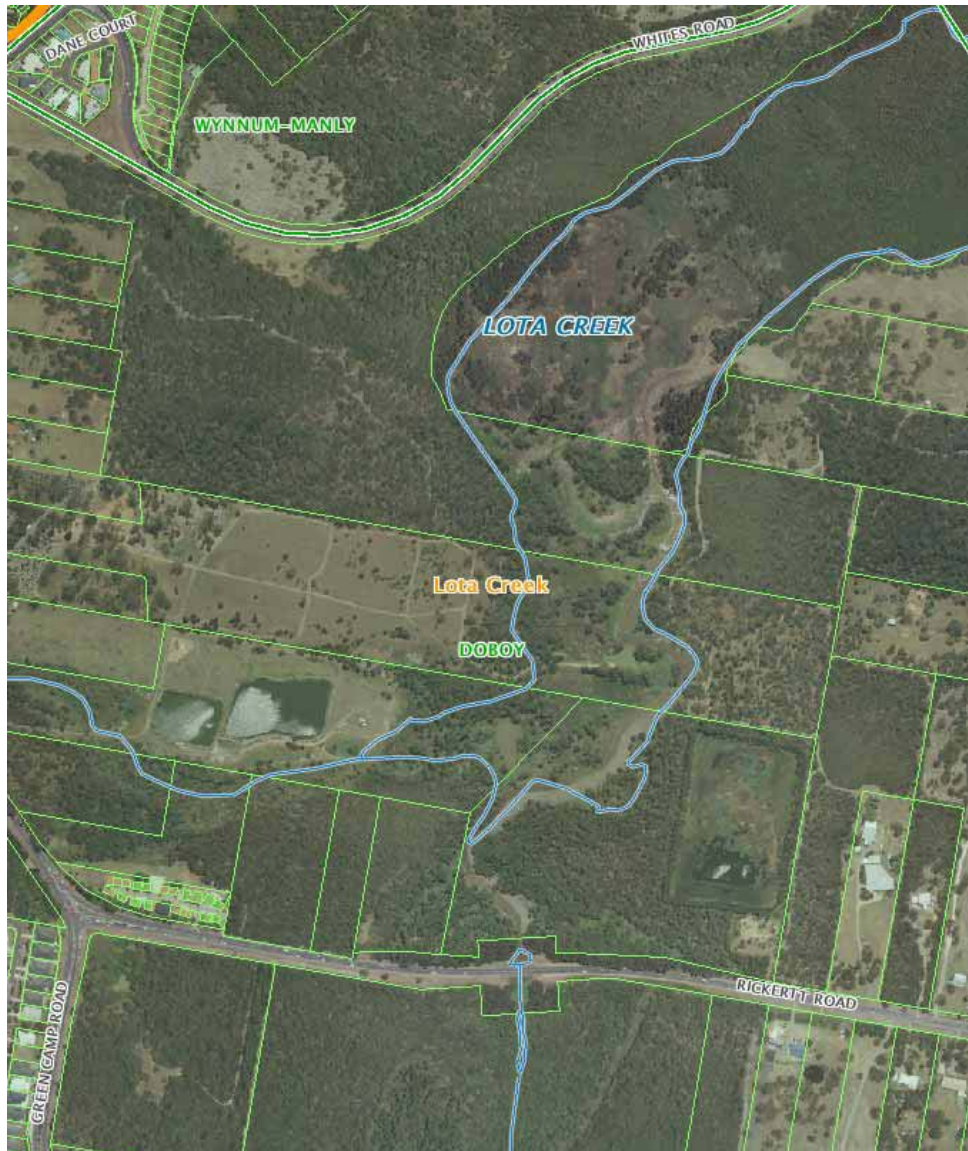
## QUERY REGARDING LOTA WETLANDS

Would anyone happen to know anything about the history of the Lota Wetlands area? This area is bounded by Whites Road, Greencamp Road and Rickertt Road and Lota Creek winds its way through the area.

The particular part in question is at the bottom of the Mookin-bah Reserve (off Greencamp Road).

The query I have received is regarding drainage lines which were supposedly put into that area in the 1940s. If anyone has any information on the drainage lines or what the area may have been used for in the past, I would love to hear from you.

Sandy Liddle  
Ph: 3207 4467 or 0438 830 140



## The history behind (and recipe for) ECCLES CAKES

Back by popular demand is Beryl Patterson's recipe for Eccles Cakes together with the history behind Eccles Cakes.

**Forget black puddings of dubious origin, or Yorkshire puddings that fail to rise – Eccles cakes are the dessert for the discerning palate.**

### History of the Eccles Cake

In 1793 James Birch's shop on the corner of Vicarage Road in Eccles began selling small, flat, raisin-filled cakes. They sold, quite literally, like hot cakes!



Earlier, in 1769, Mrs Elizabeth Raffald, the housekeeper and owner of a confectioner's shop in Arley Hall, Cheshire, wrote an influential cookery book, "[The Experienced English Housekeeper](#)" which became a best seller. The book contained a recipe for "sweet patties" with ingredients identifiably similar to the Eccles cakes of today. Could this have been the recipe seized upon by a cookery-mad servant girl who took a copy of the book with her when she went to live in ... Eccles?

Whatever the murky origins of the cakes, James Birch was certainly the first person credited with selling them on a commercial basis. They were sold from a shop at the corner of Vicarage Road and St Mary's Road (now known as Church Street) in Eccles.

However, the story becomes lost in the mists of time. Although the shop's letterhead in the 1870s showed that the firm was established in 1796, the land tax returns show that a James Birch first appeared as a "shopkeeper" in Eccles in 1785.

Whether James Birch made a name for his cakes in the 1780s, in 1796, or indeed some time later, is now impossible to say. It is equally impossible to construct a link between James Birch and Elizabeth Raffald (who died four years before the opening of Birch's shop).

More recently the question of origin of Eccles Cakes has been raised in Parliament. A question was tabled regarding the future of cakes made outside Eccles to the same ingredients. Could non Eccles-made cakes still be referred to (and sold) as Eccles cakes?

### Worldwide fame

Although traditionally made in the town from where they get their name, Eccles cakes are now famous throughout the world.

As early as 1818 they were said to be sold "at all the markets and fairs around and are even exported to America and the West Indies".

Eccles Cakes are sometimes, though always with affection, referred to as 'dead fly pies'!

### The definitive recipe for Eccles Cakes?

Throughout history, families making Eccles and (the similar) Banbury cakes have all kept their recipes as closely guarded secrets. One of the most famous expressions in Eccles is "The secret dies with me!".

The authors of cookery books would therefore have had to invent their own recipes based on the taste of the cakes they purchased at different shops. 17th Century recipes for Banbury cakes do exist but show that they differ from 19th Century ones. A major difference was the use of yeast which was necessary before the introduction of raising agents.

Although no 18th Century and only a few 19th Century cookery books give recipes specifically for Eccles cakes, it may well be that early ones differ from those known today.

Mrs Raffald's original recipe for "sweet patties" of 1769 was a mixture of the meat of a boiled calf's foot (gelatine), plus apples, oranges, nutmeg, egg yolk, currants and French brandy enveloped in a good puff pastry which could be either fried or baked. The use of the word "meat" [or "mincemeat"] in the early recipes serves as a reminder that meat was originally an ingredient in mincemeat.

The fact that Eccles cakes were being exported by 1818 also suggests very good keeping qualities, so they may well have included spirits such as brandy and rum. No wonder the Puritans wanted to ban them.

## Recipe

### Eccles Cakes

8 ozs puff pastry

(or sheet pastry. Using a 3 1/2inch diam cutter you can get six rounds out of a sheet of pastry )

6 oz currants

1 teaspoon mixed spice

1 oz soft brown sugar

Milk or a little beaten egg white

A little granulated sugar

**Chorley Cakes, from the neighbouring town of Chorley, are similar, except that they contain mixed peel and have four 'slashes'. Lancashire cakes are made the same way, but with a yeast dough instead of puff pastry. They are pricked, not slashed before baking, and when cooked resemble fruit-filled buns**

**This is the recipe for the Eccles Cakes we enjoyed on our recent bus trip, supplied by Beryl Patterson**

Set oven to 230 c . Cut 6 x 9cm (3 ½ inch)

rounds out of each sheet of pastry. Mix together the butter, currents, spice and sugar and place generous spoonfuls in the centre of each round. Dampen the edges of the pastry, draw up into the centre, like a parcel to enclose the filling and seal well. Turn over and flatten very lightly with a rolling pin. With a knife, make 3 slashes across the top of each cake, brush with milk or egg white and sprinkle with sugar. Place on a greased baking sheet and cook for 15 minutes or until golden. Serve warm with cream.

**These little cakes are believed to date back to medieval days, and they were originally served at religious festivals – the three 'slashes' being said to represent the Holy Trinity**

DATE CLAIMER: Next heritage bus tour

25 June 2011

Mark the **25<sup>th</sup> June 2011** in your diaries and calendars as the date for the next heritage bus tour. Further details will be provided in the next newsletter.

Sponsorship and support of the WMHS – Thank you to Cartridge World Wynnum



The advertisement for Cartridge World Wynnum features a yellow background on the left and a dark blue background on the right. On the yellow side, there is a logo of a star with an arrow, the text 'Cartridge World', 'Chris Langworthy', and contact information: 'Shop 5/143 Tingal Road, Wynnum, Queensland 4178', 'Phone: 07 3348 2499 Fax: 07 3396 1354', and 'Email: wynnum@cartridgeworld.com.au'. On the dark blue side, the website 'www.cartridgeworld.com' is at the top, followed by a list of services: 'Refill Inkjet & Laser Cartridges', 'New Inkjet & Laser Cartridges', 'Genuine & Compatible Copier Toners', 'Printers', 'Fax Supplies', and 'Fully Guaranteed'.

Did you know that **Cartridge World Wynnum** very generously sponsors and supports the Wynnum Manly Historical Society?

The Society would like to thank and acknowledge Cartridge World Wynnum for its ongoing support and sponsorship.

*Don't forget - for all your toner and cartridge needs, visit or contact **Chris** at Cartridge World Wynnum.*

Sponsorship and support of the WMHS – Thank you to CMK Financial Solutions



The advertisement for CMK Financial Solutions has a purple and white color scheme. At the top, there is a logo consisting of three overlapping circles above the text 'cmk' and 'FINANCIAL SOLUTIONS'. Below this, the text reads: 'Need a car? Purchase your first home? Call us to enquire! 1300 882 910 www.cmkfs.com.au'.

Carl and his staff at CMK Financial Solutions very kindly provide the use of their printer (at no cost to the Society) every month to allow us to print our monthly newsletter.

The Wynnum Manly Historical Society would like to thank and acknowledge CMK Financial Solutions for its ongoing support and sponsorship.

*For all your financial needs and advice, contact **Carl** on phone 1300 882 910.*

Wynnum Manly Historical Society Inc.

MINUTES OF GENERAL MEETING  
17 March 2011

(held in the Ambulance Museum Auditorium, Corner Cedar Street and Tingal Road)

The meeting **opened** at 7.30pm. 46 members were present. 7 apologies were received and there was one visitor, Christine Stevens.

**Vice-President, Jan Parnell** welcomed members.

**Minutes of Previous Meeting** held on 17 February 2011 were moved by Nena Robertson, seconded by Myrtle Beitz.

**Correspondence inwards and outwards, for February 2011**, was presented by Len McCreadie. The correspondence had been accepted and endorsed at the committee meeting held on Thursday 3 March 2011.

**Financial Report**, was presented by Sandy Liddle.

|  |                           |
|--|---------------------------|
| <u>General Account:</u> Opening Balance at 1 February 2011 | \$ 8,241.01               |
| Receipts: \$570.59    Expenses: \$1,324.81                 |                           |
| Less recording grant not expended                          | \$ 809.62                 |
| <b>Balance at 28 February 2011</b>                         | <b><u>\$ 6,677.17</u></b> |

|                            |                           |
|----------------------------|---------------------------|
| <u>Investment Account</u>  | <u>\$25,000.00</u>        |
| <b><u>Total Funds:</u></b> | <b><u>\$31,177.17</u></b> |

**Resource Centre:**

Members were shown the succession of buildings, occupying the site of the Commercial Bank, corner of Bay Terrace and Edith Street. Recent donations to the Society were firstly the painting of a cottage in Wondall Road painted by Ken Frazer, now hanging in the Shire cottage, and secondly pictures of the Day family formerly residents of Fox Street Wynnum.

**Tours: Jan and Noela** outlined the itinerary for the tour to Tamborine on Saturday 26 March 2011 and requested more participants and some home-made contributions for morning tea.

**Memberships:** Noela explained that the cut-off date for renewal of membership had arrived and any non-financial members would not receive future newsletters, however they were free to rejoin at any time. At least 50% of members attend the General Meetings and 19 members, unable to attend, still remain as supporting financial members.

The meeting was adjourned at 7.50pm for the holding of the Annual General Meeting for 2011.

**Speaker: Major Chad Sherrin** gave a very informative talk on the Kokoda Trail providing present day scenes of persons on the Trail together with the history of the events in 1942.

The **Lucky Door** Prize (\$5) was won by Sandy Liddle, the **Membership Draw** (\$5) by Peter Liddle and the **Raffle** by Marlene Engstrom.

A delicious supper was donated by Margaret Collins, Thelma Crouch and Debbie Tearle.

*Jill Greenhill, Minute Secretary*

## MICROFICHE AND MICROFILM RESOURCES HELD BY WMHS

Do you know that the Wynnum Manly Historical Society holds the following resources in the Resource Centre for members to use for free? The friendly volunteers on duty will be more than happy to assist you with use of the equipment.

### Microfiche

|   |             |
|---|-------------|
| Aldine History of Queensland            | 1888        |
| Births Deaths & Marriages in Queensland |             |
| <i>Pioneer Index</i>                    | 1829 – 1889 |
| <i>Federation Index</i>                 | 1890 – 1914 |
| Commonwealth Electoral Roll             |             |
| <i>Wynnum Manly</i>                     | 1903 – 1989 |
| <i>Hemmant</i>                          | 1903 – 1982 |
| Peter Spicer's Moreton Bay Diaries      | 1828 – 1949 |
| Queensland Post Office Directories      | 1868 – 1949 |
| Queensland Government Gazette           | 1859 – 1869 |
| Queensland Land Records                 | 1856 – 1859 |
| St Helena Diary                         | 1897 – 1910 |

### Microfilm

|                                  |                         |
|----------------------------------|-------------------------|
| Wynnum Herald                    | 12.01.1946 – 12.07.1967 |
| Queensland State Electoral Rolls | 1860 - 1910             |

## RESOURCES FOR SALE

For those of you who cannot make it into the Resource Centre, below is a list of books which the Society has for sale. If you would like to purchase any of these books, please contact **Jill Greenhill**. Some of these authors offer a part donation to the Wynnum Manly Historical Society from book sales to Society members. This is a good way to help support your Society.

| Author  | Title  | Publication year | Cost     |
|---|--|------------------|----------|
| <b>Beitz, Myrtle</b>                            | Mangroves to moorings revisited  | 2005             | \$ 35.00 |
| <b>Beitz, Myrtle</b>                            | A quick tour around Wynnum, Manly, Lota  | 2006             | Donation |
| <b>Davenport, Winifred &amp; Mottram, Betty</b> | Early shipping in Moreton Bay: June 1846 - December 1859, Volume 1             | 1998             | \$ 20.00 |
| <b>Davenport, Winifred &amp; Mottram, Betty</b> | Early shipping in Moreton Bay: January 1860 – December 1863, Volume 2 (2nd ed) | 2002             | \$ 20.00 |
| <b>Nalder, Robyn</b>                            | From sapling to kero tin: A peek at Gumdale's past                             | 2004             | \$ 15.00 |
| <b>Nock, Betty</b>                              | History of music in the Wynnum and Manly area 1900-1997                        | 1998             | \$ 5.00  |
| <b>Nock, Betty</b>                              | History of arts in the Wynnum and Manly area 1900-2003                         | 2005             | \$ 5.00  |

## SHIRTS AND BADGES

Why not own a smart maroon WMHS polo **shirt** - only \$22. Or a maroon WMHS **spray jacket** - \$35.00. Or a maroon WMHS warm fleecy **zip up jacket** for winter - \$35.00.

Polo shirts in all sizes available now in the Resource Room so come and try one on. .

Do you have the new **badge** -\$10.

Contact Jill (3393 3208) to order.

Calendar of WYNNUM MANLY HISTORICAL SOCIETY events

| April 2011   | May 2011  | June 2011  |
|--|---|--|
| <p><i>Thursday, 21st</i> <span style="float:right"><b>7.30pm</b></span></p> <p align="center"><b>APRIL GENERAL MEETING</b></p> <p><i>Where:</i> Ambulance Museum Auditorium<br/>Cnr Cedar St &amp; Tingal Road</p> <p><i>Topic:</i> The Capuchin Friars<br/><i>Speaker:</i> Neil Bishop</p> <p><i>Topic:</i> Upgrade of the Lota Camping Reserve<br/><i>Speaker:</i> Andrew Ensbey</p> <p>Visitors welcome.</p> <p>Cost: <b>Gold coin donation</b></p> | <p><i>Thursday, 19th</i> <span style="float:right"><b>7.30pm</b></span></p> <p align="center"><b>MAY GENERAL MEETING</b></p> <p><i>Where:</i> Ambulance Museum Auditorium<br/>Cnr Cedar St &amp; Tingal Road</p> <p><i>Topic:</i> "Presumed Guilty"<br/><i>Speaker:</i> Margaret Dakin</p> <p><i>Topic:</i> To be confirmed<br/><i>Speaker:</i></p> <p>Visitors welcome.</p> <p>Cost: <b>Gold coin donation</b></p> | <p><i>Thursday, 16th</i> <span style="float:right"><b>7.30pm</b></span></p> <p align="center"><b>JUNE GENERAL MEETING</b></p> <p><i>Where:</i> Ambulance Museum Auditorium<br/>Cnr Cedar St &amp; Tingal Road</p> <p><i>Topic:</i> TBA<br/><i>Speaker:</i> TBA</p> <p>Visitors welcome.</p> <p>Cost: <b>Gold coin donation</b></p> |
| <p><i>Thursday, 28th</i> <span style="float:right"><b>10am</b></span></p> <p align="center"><b>MORNING TEA AT WYNNUM LIBRARY</b></p> <p><i>Where:</i> Wynnum Library<br/>66 Bay Terrace</p> <p><i>Speaker:</i> Jill Greenhill<br/><i>Topic:</i> <i>Wyvernleigh</i></p> <p>Cost: <b>Free.</b></p>   | <p><i>Thursday, 26th</i> <span style="float:right"><b>10am</b></span></p> <p align="center"><b>MORNING TEA AT WYNNUM LIBRARY</b></p> <p><i>Where:</i> Wynnum Library<br/>66 Bay Terrace</p> <p><i>Speaker:</i> Scott Parsons<br/><i>Topic:</i> <i>The Wynnum Herald</i></p> <p>Cost: <b>Free.</b></p>   | <p><i>Saturday, 25th</i> <span style="float:right"><b>TBA</b></span></p> <p align="center"><b>HERITAGE BUS TOUR</b></p> <p><i>Details will be provided in near future.</i></p> <p>Cost: <b>TBA.</b></p>  |
|  |   | <p><i>Thursday, 30th</i> <span style="float:right"><b>10am</b></span></p> <p align="center"><b>MORNING TEA AT WYNNUM LIBRARY</b></p> <p><i>Where:</i> Wynnum Library<br/>66 Bay Terrace</p> <p><i>Speaker:</i> Nena Robertson<br/><i>Topic:</i> <i>Wynnum Eistedford</i></p> <p>Cost: <b>Free.</b></p>                             |

Calendar of other community events of interest

| April 2011  | May 2011  | June 2011  |
|---|---|--|
| <p><i>Saturday, 16th</i><br/>&amp; <i>Wednesday, 20th</i>      <b>10am – 11am</b></p> <p align="center"><b>COMMEMORATING THE ANZACS</b></p> <p><i>Where:</i>      National Archives of Australia<br/>16 Corporate Drive<br/>Cannon Hill</p> <p>Find out about the first recognition of Anzac Day, and the meaning and significance of the symbols used in ceremonies.</p> <p>To book, telephone 07 3249 4224 or email <a href="mailto:events@naa.gov.au">events@naa.gov.au</a></p> <p>Cost: <b>FREE</b> includes morning tea.</p>   | <p><i>Tuesday, 10th</i>                      <b>10am – 11am</b></p> <p align="center"><b>HERITAGE OF WATER</b></p> <p><i>Where:</i>      Qld State Archives<br/>Compton Road<br/>Runcorn</p> <p>Visit Queensland State Archives for a seminar on the theme "Heritage of Water" as part of the <a href="#">National Trust Heritage Festival</a>. Using examples from the collection, one of the QSA experienced reference archivists will demonstrate the richness and variety of Queensland public records that can provide depth and detail for your heritage story.</p> <p>To book, telephone 07 3131 7777.</p> <p>Cost: <b>FREE</b></p>  | <p><i>Tuesday, 10th</i>                      <b>10am – 12 noon</b></p> <p align="center"><b>QUEENSLAND DAY SEMINAR &amp; TOUR</b></p> <p><i>Where:</i>      Qld State Archives<br/>Compton Road<br/>Runcorn</p> <p>Come and celebrate Queensland Day with Queensland State Archives with a seminar and tour of the Archives.</p> <p>Featuring Queensland State Archives' most significant records from the state's early history, this seminar will offer the rare opportunity to view the <i>Proclamation of Queensland</i> as read by Governor Bowen on 10 December 1859.</p> <p>To book, telephone 07 3131 7777.</p> <p>Cost: <b>FREE</b></p> |
| <p><i>Wednesday, 20th</i>                      <b>12.30pm</b></p> <p align="center"><b>WRECKED: A SURVEY OF SHIPWRECK SITES ON THE QUEENSLAND COAST</b></p> <p><i>Where:</i>      State Library of Queensland<br/>Auditorium 2, Level 2<br/>South Brisbane</p> <p>Throughout history, Queensland's treacherous coastline has claimed nearly 1,400 vessels. The maritime industry is at the heart of Queensland's and Australia's historic development and shipping was the principal mode of transport for goods and people until well into the 20th Century. The high volume of sea trade coupled with the treacherous nature of our coastline resulted in many vessels being lost or abandoned. Today, these shipwrecks continue to attract attention, both from a historical and a tourism viewpoint. Yet, despite its profile there is much we do not know about our maritime heritage. Join Paddy Waterson, Queensland's appointed historical shipwreck practitioner, as he brings some of these stories to the surface.</p> <p>Cost: <b>Free</b> – bookings not required.</p> | <p><i>Saturday, 15th</i><br/>&amp; <i>Wednesday, 18th</i>                      <b>10am – 11am</b></p> <p align="center"><b>POST-WAR DISPLACED PERSONS</b></p> <p><i>Where:</i>      National Archives of Australia<br/>16 Corporate Drive<br/>Cannon Hill</p> <p>After World War II, Australia's intake of displaced persons was second only to that of the United States. Find out more about their stories and the programs that supported them to make Australia home.</p> <p>To book, telephone 07 3249 4224 or email <a href="mailto:events@naa.gov.au">events@naa.gov.au</a></p> <p>Cost: <b>FREE</b> includes morning tea.</p>   |  |
| <p><i>Sunday, 27th</i>                      <b>10am – 12 noon</b></p> <p align="center"><b>MILITARY HERITAGE</b></p> <p>Remember our ANZACs and explore Brisbane's fascinating military history on this guided walking tour. Morning tea at the MacArthur Museum is included.</p> <p>For bookings and more details, telephone 3403 8470.</p> <p>Cost: <b>\$10.00</b> includes morning tea.</p>  | <p><i>Friday, 27th</i>                      <b>10am – 1pm</b></p> <p align="center"><b>STORIES FROM THE RECORDS</b></p> <p><i>Where:</i>      State Library of Queensland<br/>Auditorium 2, Level 2<br/>South Brisbane</p> <p>Join the State Library and Queensland's two major family history groups - the Genealogical Society of Queensland and the Queensland Family History Society for hints on how to do your own research. Speakers will share updates on resources available and demonstrate how to use them. After the talk, network with fellow family historians over morning tea.</p> <p><b>Cost:</b> \$15.50 (morning tea included).<br/><b>Bookings</b> on 136 246 or at The Library Shop.</p> |  |

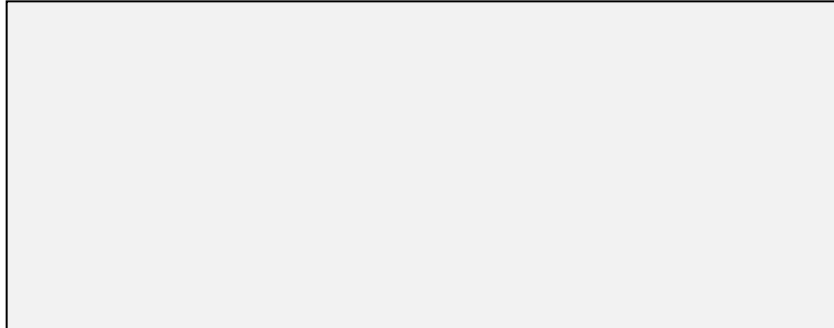


Wynnum Manly Historical Society Inc.  
PO Box 318,  
Wynnum. Q. 4178

**WEBSITE:** [www.wmhs.org.au](http://www.wmhs.org.au)

ABN 49 071 835 845

Postage  
stamp  
required



---

Wynnum Manly Historical Society Inc.

Our aim is to gather and record local history before it is lost

Visit us online at: [www.wmhs.org.au](http://www.wmhs.org.au)

---

Membership application forms are available from the Resource Centre, Civic Centre, 7/66 Bay Tce, Wynnum.

Membership costs per year (1 January to 31 December):-

Single \$15.00

Family \$25.00

High School student \$5.00

**PLEASE NOTE:** There is a joining fee of \$10.00 per person which covers the cost of a membership name badge.

**Deadline for newsletter submissions: By Sunday, 8 May 2011 for May 2011 issue.**