



WYNNUM MANLY

HISTORICAL SOCIETY INC.

September Newsletter

SEPTEMBER GENERAL MEETING

SCOUNDRELS, SCALLYWAGS AND A FEW SAINTS

KATE HARBISON

Thursday, 21 September
2017,

7:30pm

Ambulance Museum

Auditorium

(Cnr Cedar Street and
Tingal Road, Wynnum)

A gold coin donation
would be appreciated.

Raffle tickets also
available: \$1 each or 3 for
\$2

Thank you to

*Margaret Bullock and Deb
Tearle*

*for providing supper this
month.*

*Donations of \$2 and over
to the*

Wynnum Manly

*Historical Society Inc are
tax deductible.*

Presidents Report

Next month Doug and I hope to be heading to the UK to visit our daughter and her family. I say hope because presently we are booked to fly with Korean Airlines. At the moment we are weighing up our options, do we cancel (lose our money) and rebook with another carrier or stay with Korean Air and hope nothing happens or if worse comes to worse they have a contingency plan.....

So this month I thought I would tell you a little about the history of village where our daughter and her family live. Their home is at the very edge of the village and was once part of the large manor house. The "big" house has been broken up into apartments, while Meeghan's home was once the 'coach house' and the property behind her property was the stables (it is now a delightful B&B). Leaving the front gate we have the choice of turning left travelling into the village, then through suburbia into Southampton or turn right and as it is the last property in the village, you are immediately in the countryside.

"Situated on the upper reaches of the Hamble, Botley is a small but perfectly formed village derived from a Roman settlement between Chichester and Bitterne, near Southampton. Due to its position on the river, Botley was historically used as a stop off point for travelers on the stage coach route waiting for low tide and there were a great number of pubs and ale houses recorded compared to other areas within Hampshire. These days there are only three.

Throughout its history Botley has adapted its trade depending on the resources available. In the 13th century Botley was granted the right to hold a weekly market. (In those days there were very few shops and if you wished to buy or sell anything you had to go to a market). Botley market was, apparently, still going at the beginning of the 17th century but it had died out by the 18th century. In the 19th century markets were revived. In 1829 a corn market began and a cattle market soon followed. Botley Market Hall was built in 1848.

Looking back, perhaps the two most noteworthy periods of business surround that of the mill and the vast amount of strawberry fields that once encircled the village.

SOCIETY TOURS IN 2017

Keep this days free!

Lord Mayor's Seniors Christmas Party

*Wednesday 6 December at
12.45 pm, Brisbane City Hall*

An exciting variety Concert under the glittering dome of Brisbane City Hall's Main Auditorium

A Table for 10 members is allocated to the Society. Delicious refreshments.

All FREE

The Towong Room is available as a waiting area with water and seating.

This is an event well worth attending, but limited to those over 60 years old!

Four of our ten tickets have already been claimed.

Contact Jill (3393 3208 or jillg01@tpg.com.au) for a seat.

Botley flour mill was built in the 11th century and originally barges would have made their way up the river Hamble with coal for the burners, returning (much to the horror I assume of many health and safety officials nowadays) with the fresh flour ready to be distributed across the county. The mill was operated right up to the 1980s when work was transferred to a site in Hedge End and is now in the process of being renovated with the intention of becoming a museum.

During the mid 19th century the climate in Hampshire was such that it became ideal conditions for strawberry growing and quickly became the largest growing area in Europe. By the 1930s Botley boasted over 36 different commercial growers who relied on the railway to distribute their goods across the country. When the line was built from London to Southampton in the 1840s there was already a proposed stop off within the Botley region to link the line to Fareham and Gosport and this proved vital to the village as a means to transport goods and to bring people to the area.

Strawberry growing was a risky business for a market that was only really around for six to seven weeks within the year and growers had to battle frosts, disease and insects to ensure that they made enough money within those weeks to feed their families for the rest of the year. After the Second World War, competition from Italy and Spain became too great for the Botley growers and many businesses folded. Today, very few strawberry fields remain in the area, a far cry from the scenes that would have been over 60 years ago.

William Cobbett, perhaps the most famous of Botley's exports, was actually born in Farnham but moved to Botley in 1805 to raise his brood of seven children and combine his work as a political journalist, with the more demanding role of running a farm and a family.

Being the son of a farmer, he was passionate about protecting the trade and rallied against corrupt statesmen and the middle classes resulting in him serving a prison sentence in 1810 for protesting against the use of flogging within the army. Cobbett once said Botley 'the most delightful village in the world it had everything in it that he loved and nothing that he hated, as it had neither workhouse, barber, attorney and not even a justice of the peace!'"

“ –“ information sourced from an article in Hampshire Life by Liz Barnett

Next month, I will continue Botley's history including information on Fairthorne Manor, now part of the YMCA group, and the part this area played in the World War II.

Can I remind everyone about the upcoming Bremer River Cruise on Wednesday 20th September. The boat departs Mowbray Park @ 0930 returning @ 1530. Morning tea, Lunch and afternoon tea plus the cruise for only \$65. Please see Jill if you would like to book.

Until next time, Deborah Tearle

Thankyou to our sponsors...

The Society would like to thank and acknowledge Cartridge World Wynnum for its ongoing support and sponsorship.



Cartridge World
Chris Langworthy

Shop 5/143 Tingal Road, Wynnum, Queensland 4178
Phone: 07 3348 2499 Fax: 07 3396 1354
Email: wynnum@cartridgeworld.com.au

www.cartridgeworld.com

- Refill Inkjet & Laser Cartridges
- New Inkjet & Laser Cartridges
- Genuine & Compatible Copier Toners
- Printers
- Fax Supplies
- Fully Guaranteed

Resource Centre Report - September 2017



- *The Nankervis Family*

Last month we were asking for relatives of the Nankervis family to claim the marriage and death certificates of Francis Edward Nankervis and the change of name, Deed Poll.

Very soon a phone call came from Jason Nankervis, a grandson of the original owner of the certificates. Member Nena Robertson's grandson is a friend of Jason. So we thank Nena for passing on the information to him. Nena has been given the job of handing the Certificates over.

- *Do any of you remember Dr Keith O'Reilly?*

Dr O'Reilly's daughter, Cynthia, found us last week. She came to offer some of his memorabilia. Unfortunately, as we are not a Museum, we could not take any large solid objects, or his graduation gown. However she will visit us again with documents and papers.

- *Sammy Greene's Bicycle*

A recent visitor, who was an old pupil of Wynnum Central State School, had a question about Sam Greene. He wished to know the make of Sam Greene's bicycle.

We looked at all the pictures and decided eventually that perhaps Sam made machines himself. The motor appears to be very near the ground and is attached to a standard bicycle.

The visitor was very interested in learning of Sam's many pursuits and was unaware of the land owned by the Greene's in Ransome, along the bank of Tingalpa Creek or of the gold prospecting and the oil well at Wellington Point.

- *New members from Canberra*

Duncan and Adrienne Morrison called in last week and presented us with copies of very early surveying maps of the Lytton and North Wynnum. (See Page 7). Though our visitors presently live in Canberra they are moving to Wynnum as soon as their new Unit is finished, on the old library site. Building of these Units was due to start in March 2017. So far all the trees have been cut down! However the Morrison's have already joined the Society.

- *George Clayton Park*

A newcomer to Wynnum phoned to ask why George Clayton Park was so named. George was the Brisbane City Councillor for Wynnum/Manly in the 1950's and 60's and initiated the swamp / sand dune area be developed as the parkland that we have today.

Till next time, Jill

The Civic Centre was the big building scheme for 1977, only 40 years ago. Now we wait to see the appearance of the new residential complex “Encore”, to be built on the same site.

CENTRE TAKES SHAPE

Work ahead of schedule

Work on the new Wynnum Civic Centre complex is ahead of schedule, Brisbane City Council Health Committee chairman (Ald. Eric Shaw, Waterloo Bay) said yesterday.

Mostly fine weather had enabled the contractors to achieve this and they and their staff were to be congratulated on the manner in which the work was being carried out.

When completed the new building would provide greatly improved facilities for Wynnum residents and those of surrounding districts, Ald. Shaw said.

Many people came to Wynnum from other suburbs to pay their rates and electricity accounts, do some shopping, picnic on the Esplanade or go boating.

The new building would provide facilities so that anyone who had business with the council would be able to transact it in reasonable comfort and privacy without travelling to the city.

Feature

Another feature of the new complex would be the new Wynnum Library, which would provide more floor space than any other civic library in Brisbane.

Ald. Shaw revealed that many businessmen had expressed interest in renting office space on the second floor of the new complex.

“This will be first class accommodation which will boast bay views and air-conditioned comfort. I would say that the accommodation would be better than the city,” Ald. Shaw said. Some of the area may be let as a doctor’s surgery, Ald. Shaw said.

Costing about \$600,000, the complex was expected to be finished by October.

Wynnum Redlands Herald
Wednesday March 23 1977

Transcribed by Heather Langston

Christmas Hamper

Christmas is almost upon us folks! Donations for the Christmas Hamper are now being received in the Resource Room at the Old School Building or at the next meeting.



The Church of Christ and its existence in Wynnum.

ORIGINS

The organisation of the original Church of Christ is traced back to the teachings of Jesus Christ in the first century AD with Jesus Christ as its head and the twelve apostles to oversee the church the earth.

Unfortunately over time ideas and doctrines were introduced into the church by men, which were not aligned with the established doctrines of Jesus Christ, particularly consolidation of authority to one man, the bishop, and not twelve men as originally practised. By 570AD there was not one church on earth which stood for the true order of the original New Testament Church of Christ.

A complete restoration of the Church of Christ occurred on April 6 1830 in America, for the church on earth, according to the truth of the Gospels.

IN AUSTRALIA

The Churches of Christ in Australia is a Christian movement with historical influences from the United States of America and the United Kingdom. Individual churches are largely autonomous and operate on a democratic form of government. Ministers or pastors may or may not be formally ordained. Lay people play an important part of the worship, mission, governance and management of the church.

IN QUEENSLAND

A small group of people met in Albion, Brisbane in 1871, but it was not until 1 August 1882 that C. M. Fischer and T. Geraghty established the first church of Christ in Queensland at Zillman Waterholes (now Zillmere). The Ann Street Church of Christ was established in 1883 and moved to its present building in Brisbane's central business district in 1898.

In the 2011 Australian Census there were 49,687, identifying with the church, that is 0.2% of the population. There is a National Theological College, located at Mulgrave in SE Melbourne. The Sydney College of Divinity also provides training courses.

IN WYNNUM



Originally the Church of Christ in Wynnum was a "Tent Mission". On 12th December 1925 sixty men built the first church, at 55 Berrima Street, in one day. The first service was held on the next day. Former President of the Historical Society, Percy Duke was there, a lad aged 11 years old.

55 Berrima Street on 12 December 1925 Construction of the Church of Christ



The workmen who built the new church

The new church was officially opened on 26 January 1926. Pastor A.J. Fischer conducted the Divine Service

In 1930 a large hall was built at the same site.

2007. Church of Christ 55 Berrima Street, Wynnum.



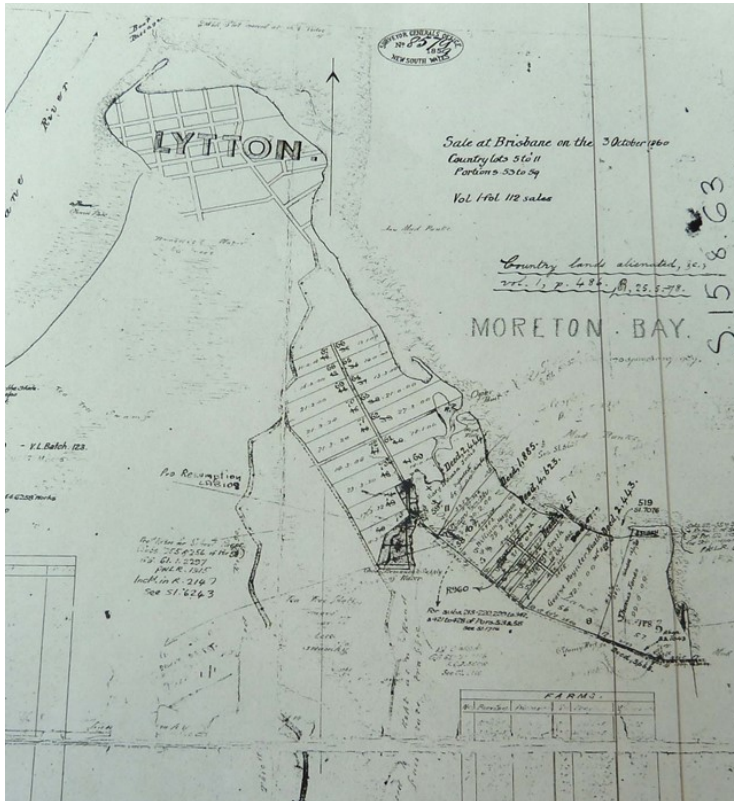
This church was known as a denominational Church of Christ, with affiliation with other Churches of Christ.

This church served its congregation for 88 years and was closed on Sunday 29 September 2013.

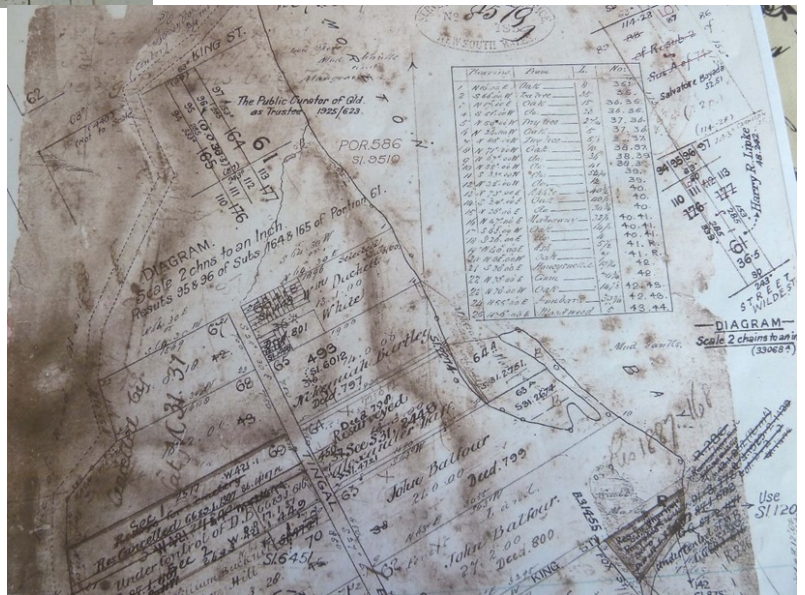
There is a Church of Christ still operating in Wynnum, at the corner of Chestnut Street and Tingal Road. The building started in 1959 using church funds. This as a non-denominational Church of Christ being self governing and not connected to other Churches of Christ.

Does anyone remember the Reverent Horace Hilton Bassard who was the Minister at the Berrima Street Church between 1926 and 1930?

Early Survey Maps of Lytton and Wynnum North



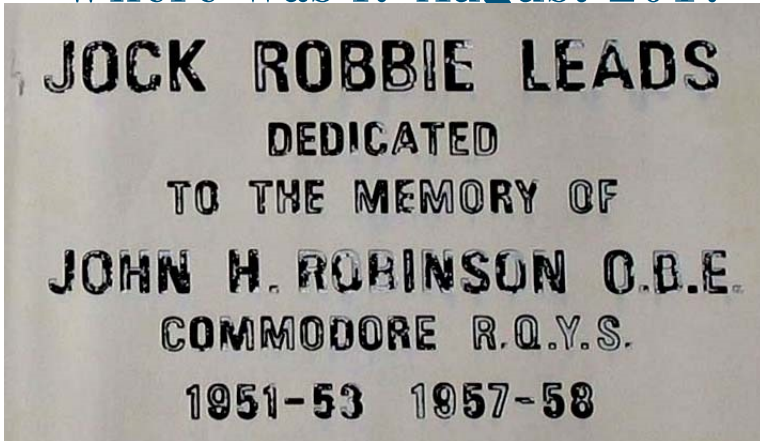
Duncan Morrison provided the Society with these two survey plans, each signed by early surveyor David Warner in August 1859. Visit the Resource Room to see the detail.



Resources for sale at the Resource Room

Beitz, Myrtle	Mangroves to Moorings Revisited	2005	\$35
Davenport, Winifred and Mottram, Betty	Early Shipping in Moreton Bay: June 1846- December 1859, Volume 1	1998	\$5
Davenport, Winifred and Mottram, Betty	Early Shipping in Moreton Bay: January 1860 - December 1863, Volume 2	2002	\$5
Nock, Betty	History of Music in the Wynnum and Manly area 1900-1997	1998	\$5
Nock, Betty	History of Arts in the Wynnum and Manly area 1900-2003	2005	\$5

Where was I? August 2017



The plaque, on the wall, to the right side of the photograph is at the public boat ramp, for access to Manly Boat Harbour. This ramp is hidden on the seaward side of the Moreton Bay Trailer Boat Club, accessible through their car park.



Where am I? September 2017



Till next time, Jill

Series TIME LINE FROM 1770
No 10 1842

Lytton was the trading centre for the early settlers. The river was the trading route, with Lytton as a dock. From 1842, free settlers were allowed access to Brisbane following its gradual closure as a convict prison. With the quest for tenable freehold land, James Warner's work dictated the future of this area. Warner was a licensed surveyor. He surveyed some 16 and 20 perch allotments at Lytton.

For more of Myrtle's places and people of interest series...



Wynnum Manly Historical Society Inc

Minutes of General Meeting held in the Ambulance Museum Auditorium

on Thursday 17 August 2017

The meeting was opened at 7.30pm by President Deb Tearle. 31 members were present and 4 apologies were received. There was 1 visitor, Lee Tinney.

President Deb recalled that on this day in 1977, we remember Elvis Presley's death, in 1980, Azaria Chamberlin was taken by a dingo and in 1945, this was VP day, victory in the Pacific.

Previous Minutes:

Minutes of Meeting of 20 July 2017 were accepted by Melissa Champley and seconded by Myrtle Beitz.

Correspondence:

Lena McCreadie presented the correspondence for July 2017. The correspondence was accepted and endorsed at the committee meeting on Thursday 3 August 2017.

Treasurers Report

BOQ A/c No 20139708 1 July 2017 – 31 July 2017

Opening balance at 1 July 2017 **\$36,006.27**

which comprises:

Everyday and Grant Account

Opening balance at 1 June 2017 \$6,152.14

(Everyday \$4,729.33, Heritage \$0.00, DSS \$137.00, Lota House 1,422.81)

Income \$ 93.15 Expenditure \$35.00

Closing balance at 31 July 2017 **\$6,211.06**

(Everyday \$4,788.25, Lota House \$1,422.81)

Websaver Account at 31 July 2017 (Inc. interest \$32.46) \$29,885.82

TOTAL FUNDS AS AT 31 July 2017 \$36,096.88

Resource Centre: The "Where am I" picture for this month showed the plaque at the public boat ramp near Norfolk Point, celebrating the "Jock Robbie Leads". John H Robinson was Commodore of the Royal Queensland Yacht Squadron from 1951 to 1953 and 1957 to 1958.

A lady brought some original documents in to us, which she had retrieved when sorting the contents of a deceased estate for Lifeline There was a marriage and a death certificate and a change of name by Deed Poll document. This find was reported in the July newsletter and we were able to pass the documents on to the grandson of the original owner, with the help of Nena Robertson. Thank you Nena.

Tours:

The next outing will be held on Wednesday 20 September, a day cruise on the Brisbane River to the mouth of the Bremer River. Cost \$65.00. We have 17 bookings so far. Those requiring to share the cost of a maxi-taxi to Mowbray Park are to indicate when booking.

Speaker: Tom Clifford has been a member of the Telstra Museum, at Sandgate Road, Clayfield for 6 years. In 1953 he became a telegram boy in Western Queensland, then moved to Northern Queensland. He gave us a practical lesson on the use of Morse code with buzzer and flashing lights. The code was invented by Samuel Morris, an American, first used in America in the 1840's and in Australia in the 1850s.

Raffle was won by Deb Tearle, **Lucky Door prize** (\$5) by Eric Sibley and the **Membership Draw** (\$5) by Melissa Champley.

The meeting closed at 8.45pm. Many thanks to Lyn Shanks, Carol Astill and Wendy Parsons for a delicious supper.

Jill Greenhill (*Minute Secretary*)

Our Committee...

President: Deb Tearle	33969697	president@wmhs.org.au
Vice President: Jan Parnell	33966001	
Secretary: Lena McCreadie	33934393	secretary@wmhs.org.au
Treasurer: Sandy Liddle	32074467	treasurer@wmhs.org.au
Librarian: Jill Greenhill	33933208	library@wmhs.org.au
Speaker Co-ordinator: Myrtle Beitz	33964711	events@wmhs.org.au
Membership Co-ordinator: Sandy Liddle	32074467	membership@wmhs.org.au
Newsletter Editor: Mitchell Parsons	0448522403	newsletter@wmhs.org.au
Supper Co-ordinator: Deborah Tearle	33969697	supper@wmhs.org.au
Publicity Officer: Deborah Tearke	33969697	publicity@wmhs.org.au
Welfare Officer: Ellen Coupland	38991326	coupland@bigpond.net.au
Coming events: Mitchell Parsons	0448522403	oralhistory@wmhs.org.au
Plaques and Memorials: Noela Stratton	33960069	

Life Members: Myrtle Beitz, Jill Greenhill, Noela Stratton

Friend of Society: John McIntyre

General Meetings

Afternoon set up: Col Brown, Jill Greenhill, Myrtle Beitz, Mitch Parsons

Welcome at Door and raffles: Ian Wheeler, Mitch Parsons

Bring and Buy: Ellen Coupland

Kitchen Co-ordinator: Margaret Mack

Supper Co-ordination: Deborah Tearle

Raffle Prizes: Sandra Wheeler

Newsletters

Editor: Mitch Parsons

Distribution (email): Mitch Parsons

Distribution (mail out): Jill Greenhill

Resource Centre

Volunteers: Ian Wheeler, Ian Kennedy, Col Brown, Myrtle Beitz, Dawn Wilkins, Heather Langston, Margaret Bulloch, Ellen Coupland, Denise Cogill, Jan Parnell

Research Enquiries: Jill Greenhill, Ellen Coupland

Tours.

Planning and Co-ordination: Jan Parnell, Jill Greenhill, Lena McCreadie, Ellen Coupland, Deb Tearle

Booklet: Jill Greenhill

Bookings: Sandy Liddle at General Meetings and Resource Centre staff each weekday

When	Where	What's On
September 16 10am-11am Phone Wynnum Library on 07 3403 2199 to reserve your place.	Wynnum Library 145 Florence Street, Wynnum 4178 (above Woolworths)	Shakespeare: When in Rome...Antony and Cleopatra Join the actors from the Brisbane Shakespeare Festival troupe for an hour-long reading of Antony and Cleopatra with commentary and music. Presented by 4MBS. Bookings essential.
September 24 2017 11am-12pm Book by calling 3403 4166.	Brisbane Square Library 266 George Street Brisbane, Queensland 4000	Meet Melissa Ashley Artist Elizabeth Gould spent her life capturing the sublime beauty of birds the world had never seen before. But her legacy was eclipsed by the fame of her husband, John Gould. The Birdman's Wife at last gives voice to a passionate and adventurous spirit who was so much more than the woman behind the man. Join poet, writer, birder and academic Melissa Ashley as she discusses her experiences in writing her debut novel The Birdman's Wife. Bookings essential.
September 27 , 2017 230pm-4pm Book by calling 3403 4166.	Brisbane Square Library 266 George Street Brisbane, Queensland 4000	Trove Basics Learn how to find and get access to more than four million Australian resources online including books, images, historic newspapers, maps, music, archives and more. Bookings essential.
September 28 2017 10 – 11am Bookings essential Phone Wynnum Library on 07 3403 2199 to reserve your place.	Wynnum Library 145 Florence Street, Wynnum 4178 (above Woolworths)	The great picnic One hundred years ago, on Easter Monday 1917, the Wynnum and Manly Sailing Club held the 'Great Picnic' on Green Island 'in aid of our returned boys'. Join local historian Kate Harbison to learn the story of this event. Bookings essential.
October 3rd and 10th 130pm-330pm Email Madeleine Mionnet to book at u3acomptutor@gmail.com	Star Transport Training Room, Raby Bay, Cleveland	Research Convict Ancestors Online Finding your convict ancestors can be a big challenge however many institutions are now digitising their records and make them available to access online, This two part course will give you ideas about where to look and more importantly how to navigate some of these databases, which is often problematic. Please bring a laptop if you have one available to you.

Wynnum Manly Historical Society Inc.

PO Box 318

Wynnum QLD 4178



Wynnum Manly Historical Society inc.
Our aim is to gather and record local history before it is lost.



Membership application forms are available from the Resource Centre
at the Old Wynnum Central State School.

Membership costs per year (1 January to 31 December)

Single \$20.00

Family \$30.00

High School Student \$10.00

PLEASE NOTE: There is a joining fee of \$10.00 per person.

Visit us online at: www.wmhs.org.au