



Wynnum – 1910s Photo No 144

Beachfront –Industry - Esplanade– looking north towards Jetty No 1. Wynnum Creek is to the north of the boats. As it was the custom then the locals have arrived to buy direct from the fishermen before they take their harvest to the Brisbane Markets. The Wynnum Fish Market was yet to come.

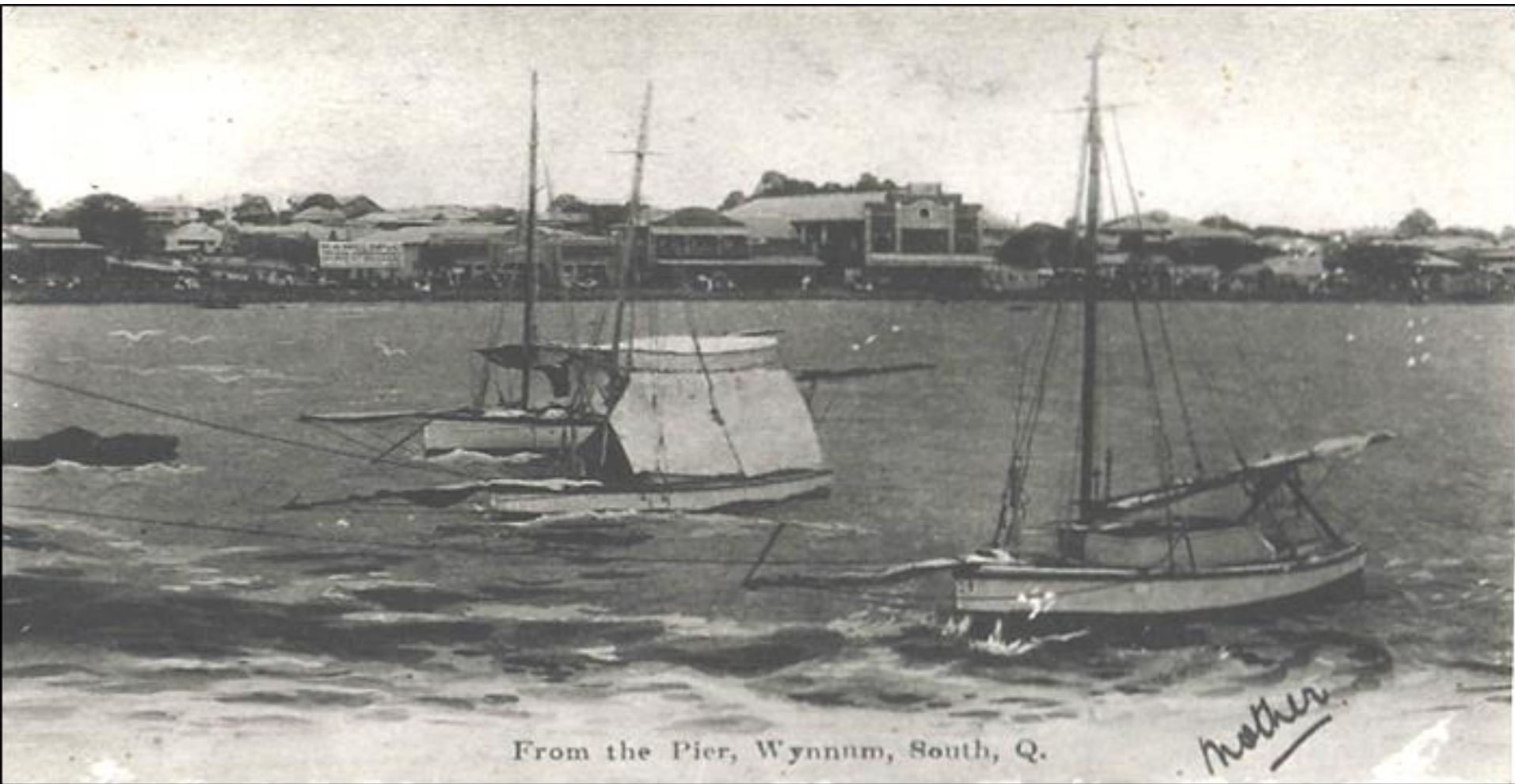
Myrtle Beitz, August 2005



Wynnum – 1906 Photo No 142

Creek – Boats - South bank of Wynnum Creek, down stream from Fox Street Bridge. Reported in the *Queenslander* Saturday 19 January 1907 two men drowned in an accident involving this half submerged boat *Blue Spec* on 19 December. The crowd could be paying their respects to the memory of these people.

Myrtle Beitz, August 2005



Wynnum – 1915-1920 Photo No 146

Beachfront – Boats – Entertainment – Post Cards Esplanade – photo taken from Wynnum No 2 jetty looking north-west. Both Theatres can be seen, The Imperial behind the sign for W.A. Hislop & Co. then Major's café before the splendor of the Empire. Mrs Smith manufactured the necessary carbide gas for the lanterns, which was piped from a shed in her yard behind the Empire Theatre. Fire destroyed the Empire in 1921

Myrtle Beitz, August 2005



Wynnum – 1920s Photo No 147

Shops – Traders - Mrs Maguire conducted this store on the Manly and beach side of the corner of Kingsley Terrace and Gordon Parade. Very few of these store have survived the coming of the Supermarkets, some have been converted to residences.

Myrtle Beitz, August 2005



Wynnum – 1911 Photo No 148 **Creek** - Upstream a walk bridge connected Coreen (Creek) Street to St Catherines Terrace. A camper found a good spot under a large tree to pitch his tent. Prickly pear is growing on the bank in the L corner.
Myrtle Beitz, August 2005

WYNNUM
1920
TOWN COUNCIL



ALD. J. SMYTH



ALD. J. N. FISHER



ALD. G. DOWRIE



ALD. R. RUSSELL



ALD. J. WOOSLEY



ALD. J. T. SANDERSON



ALD. A. E. JACKSON



ALD. G. HEYMER



ALD. H. F. SIBLEY



ALD. W. HUTCHINSON



ALD. R. J. ARTHUR



ALD. F. CLARK



Wynnium – 1920

Photo No 149

Local Authority - Wynnium Town Council – Chairman R. Russell and members W. Arthur, G. Clark, G. Dowrie, J. Fisher, G. Heymer, J. Hutchinson, A. Jackson, J. Sanderson, H. Sibley, J. Smyth, J. Woosley, J. Sands Town Clerk, who worked so hard for the slow but sure development of the district.

Myrtle Beitz, August 2005

WYNNUM TOWN COUNCIL.



Wynnium – 1915

Photo No 150

Local Authority - James Smyth in this year of 1915 was Mayor. In many years prior as a council employee he was responsible for the tree planting on the fairly barren and shadeless foreshore. Members, H. Randall, R. Russell, A. Cunningham, J. Stanley, A.E. Chave, J. Sands Town Clerk, A. Marsh, S. Greene, E.O. McNaught, G. Heymer, E.B. Port, and J. Hargreaves.

Myrtle Beitz, August 2005

WYNNUM TOWN COUNCIL 1921 to 1923.



ALD. E. A. TARDENT
(1921-1923)



ALD. H. J. SCOTT
(1921-1923)



ALD. H. C. RANDALL
(1921-1923)



ALD. J. PATTERSON
(1921-1923)



ALD. W. HATKIN
(1921-1923)



ALD. F. W. SCALES
(1921-1923)



ALD. S. W. EDWARDS
(1921-1923)



J. W. GREENE, ESQ.
(1921-1923)



ALD. R. RUSSELL
(1921-1923)



ALD. A. SANDS
(1921-1923)



ALD. F. CLARK
(1921-1923)



ALD. E. G. WALL
(1921-1923)



ALD. A. A. JOYCE
(1921-1923)



ALD. J. W. IRVINE
(1921-1923)



ALD. F. B. BEAMAN
(1921-1923)



J. SANDS
(1921-1923)

First Council Elected
under Residence Franchise.

Wynnum – 1913

Photo No 148 missing

Local Authority - Perhaps the most historic group of Town Councillors. Though many of them had served by this time on the Wynnum Divisional Board under a Chairman, this council was the first to use the title “Town Council” thus giving the leader the title of Mayor who was S. Greene, Members were J. Smyth, J. Curtis, E.B.Port, W, J. McFadden, Alf E. Chave, E.McNaught, G. Heymer, C.H.B. McKay and J. Sands Town Clerk.

Myrtle Beitz, August 2005

WYNNUM TOWN COUNCIL 1921 to 1923.



Wynnum – 1921-1923

Photo No 150

Local Authority - The last Town Council of 1921-23 before the formation of the Greater Brisbane City Council in 1924. A Government decision to enlarge the area controlled by the Brisbane City Council from a radius of 5 miles to 10 miles from the G.P.O. brought Sandgate and Wynnum under their control.

This is the last Town Council of 1921-23 before the formation of the Greater Brisbane City Council in 1924. A Government decision to enlarge the area controlled by the Brisbane City Council from a radius of 5 miles to 10 miles from the G.P.O. brought Sandgate and Wynnum under their control on 1 October, 1925. Aldermen 1922-25, E.A. Tardent, F.B. Redman, J.R. Caterson, A. Sands, C.A. Stone, J.W. Irvine, O. Munse, A. Krummel, A. Luke, J.W. Greene, Mayor, G.W. Edmunds, J. Sands, Town Clerk, D..J. Jamieson, W.H. Atkin, J. Marsh, F. Clark, H.A. Scott, A.A. Joyce, H. Randall, R. Russell, E. Wall, and F. Scales.

Myrtle Beitz, August 2005

WYNNUM TOWN COUNCIL.



Wynnum – 1915

Photo No 151 same as 147

Local Authority - James Smyth in this year of 1915 was Mayor - in many years prior as a council employee he was responsible for the tree planting on the fairly barren and shadeless foreshore – members, H. Randall, R. Russell, A. Cunningham, J. Stanley, A.E. Chave, J. Sands Town Clerk, A. Marsh, S. Greene, E.O.McNaught, G. Heymer, E.B. Port, and J. Hargreaves.

Myrtle Beitz, August 2005

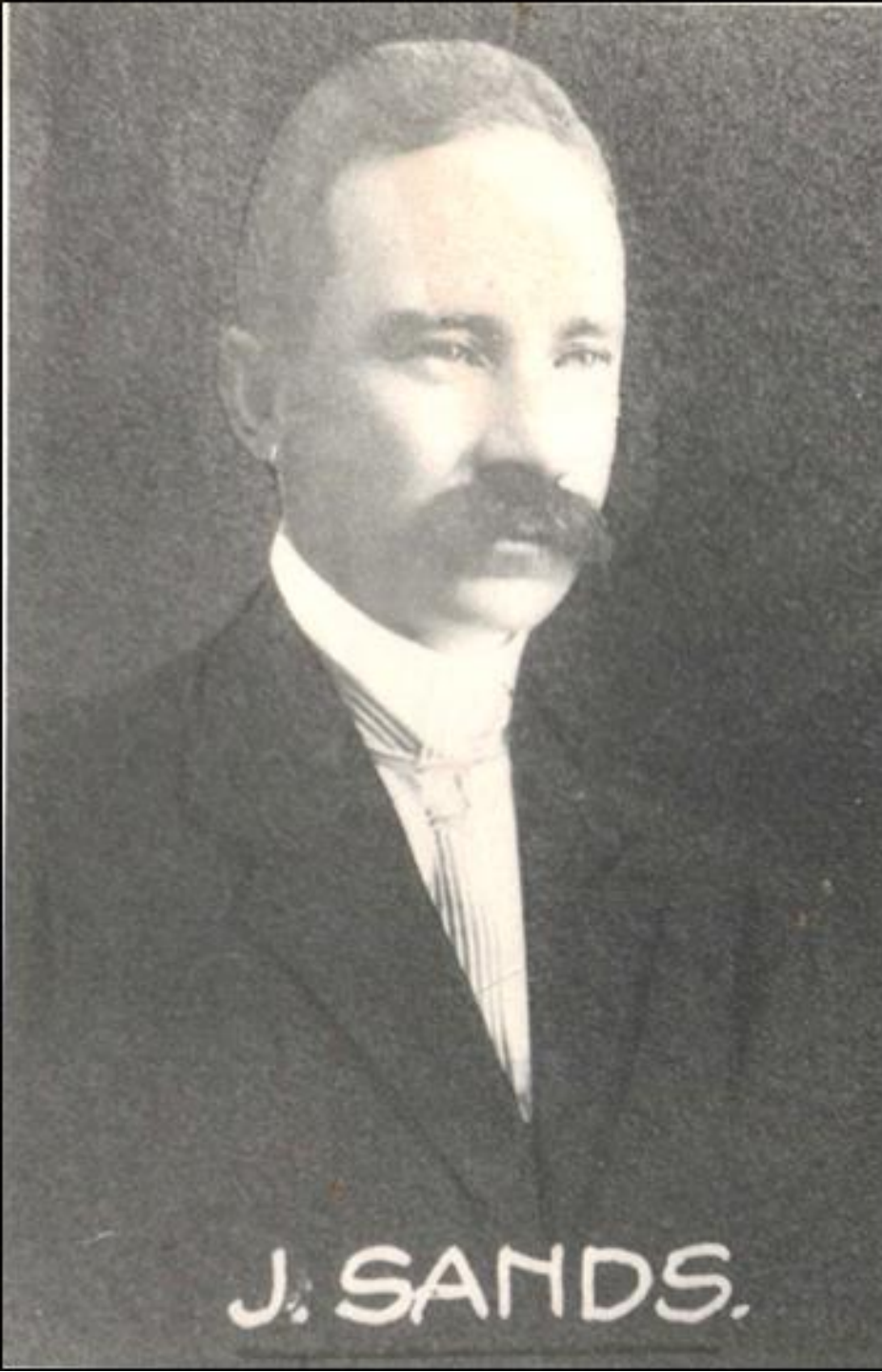


Wynnum – 1913

Photo No 154

Local Authority - Characters – Sam Greene, the newly declared Wynnum Town Council of 1913 bestowed the honour of first Mayor of Wynnum to Mr Sam Greene. He is also remembered for his association with the Star Theatre and the local newspaper the Waterloo Bay Leader

Myrtle Beitz, August 2005



Wynnum – 1913

Photo Bo 155

Local Authority - Characters - Joe Sands for many years was Shire Clerk and Town Engineer through many of the growing days of our district

Myrtle Beitz, August 2005



Wynnum – about 1931 Photo No 157 **View – Aerial** The two streets running into the bottom of the photo are Cambridge Parade and Cardigan Parade. The centre background near the top third shows Memorial Park, the old Grandstand, the pavilion buildings and the Drill Hall, which is site of Wynnum High School. *Myrtle Beitz, August 2005*



Wynnnum – 1935 Photo No 158 **Beachfront - Memorials – Jetties** - situated near Wading Pool and Jetty No. 2 - The Barnes Memorial was erected to remember an outstanding charitable man, Walter Henry Barnes M.L.A. who died in February 1933. He represented the electorate for 30 years. The inscription reads *His race well run, his work well done*. Cars were allowed within the promenade. Note the scales near the light pole. Pandanus Beach to the left of this jetty was created later in 1987 some 52 years. *Myrtle Beitz, August 2005*



Wynnum – 1930s Photo No 159

Beachfront –Jetties –Bathing Boxes –Events - Esplanade – occasion unknown The size of the crowd on the jetty suggests the opening of the Wading Pool or the Barnes Memorial both of 1932. Another suggestion is one of the church services that were held on the beach at that time, seems to be a robed minister of religion on the pontoon on the water. This Jetty No 2 has been replaced by the stone walkway and Pandanus Beach was created here in 1987. The photographer is looking south past the Nuns bathing boxes to Darling Point.

Myrtle Beitz, August 2005



Wynnum – 1932 Photo No 160

Beachfront – Memorials – Events - Esplanade – Opening and dedication of Barnes Memorial Stone at the entrance to No. 2 Jetty and close to the Wading Pool. Tree guards show recent planting of our shade trees. The majority of cars show the popularity of the canvas roofed roadsters of the time.

Myrtle Beitz, August 2005



Wynnum - 1930s Photo No 161

Beachfront – Events – Sand gardens – Esplanade. These particular sand garden competitions were held below the wall on sand some distance south of wading pool about at the foot of Pine Street. Others were performed above the wall having sand brought and placed between parallel boards for the occasion. The judge is ready but not all the children have completed their creations. The Courier Mail conducted these competitions giving a gold watch as a prize for the winner

Myrtle Beitz, August 2005



Wynnum – 1978 Photo No 162

Creek – Parks - Greene Park – looking to Wynnum Creek and Fox Street Bridge. Mangroves line the creek bank unlike the photos of the creek at the opening of the Fox Street Bridge.

Myrtle Beitz, August 2005

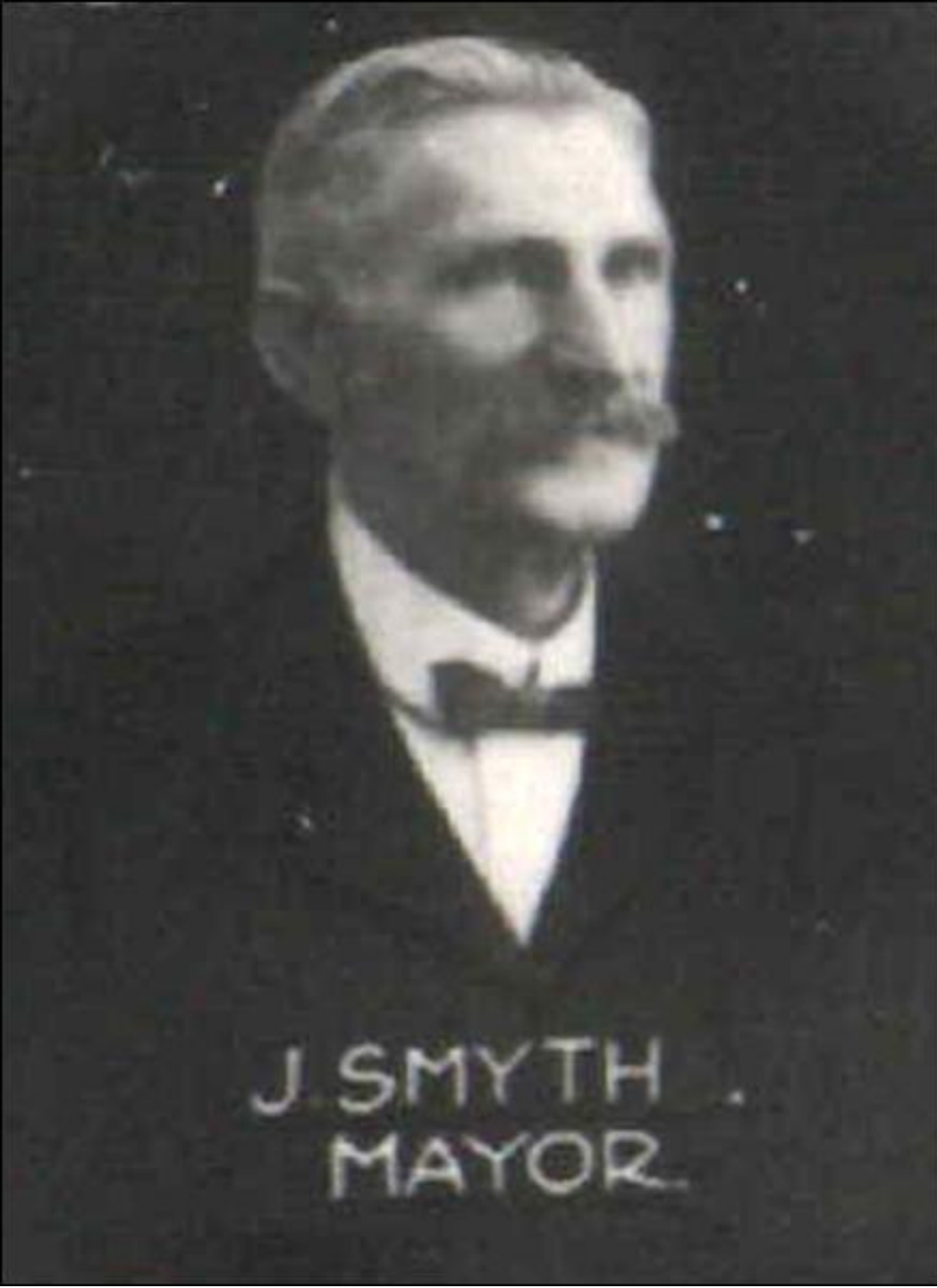


Wynnum – 1978 Photo No 163 **Creek** - the mouth of Wynnum Creek, May 1978. Jetty No 1 has long been removed but boat ramp on northern bank provides easy launching for outboard powered fiberglass and aluminum boats. Pelicans frequent this area waiting for an easy meal.
Myrtle Beitz, August 2005



Wynnum – 1909 Photo No 162 **Transport** - After the opening of the Melbourne Street (South Brisbane) Station in 1891 all trains from Cleveland and Wynnum no longer terminated at Wooloongabba Station. From here passengers proceeded to Queen Street by foot across Victoria Street Bridge or by horse drawn buses. Later a tramway line was built enabling electric trams to convey passengers. South Brisbane supported a busy shopping complex. At the time business men did not support a cross river rail bridge. The inevitable came with the opening of a rail bridge connecting South Brisbane with Roma Street Stations on 18 November 1978.

Myrtle Beitz, August 2005



Wynnum – 1915

Photo No 165 same as 147

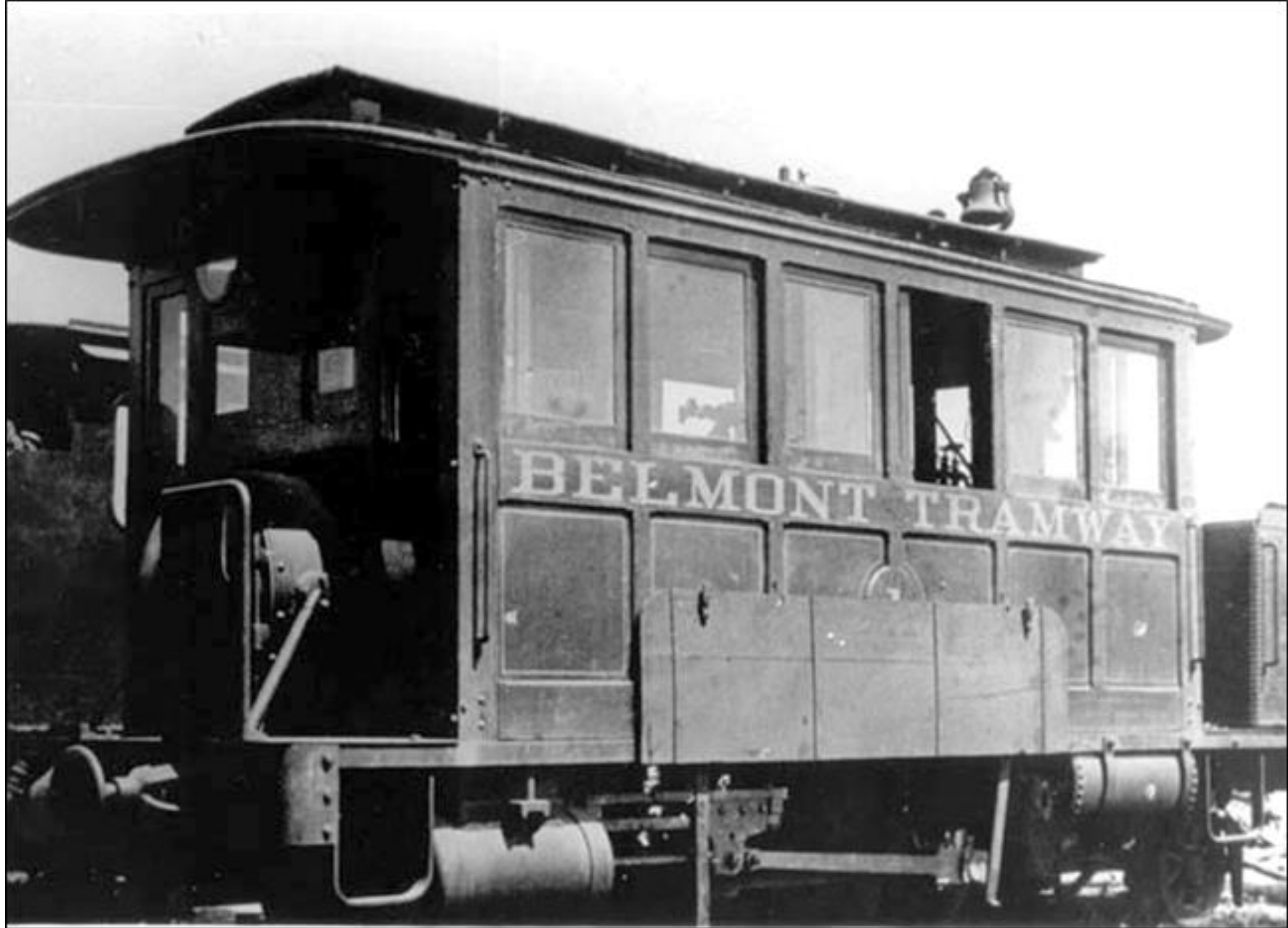
Local Authority - James Smyth in this year of 1915 was Mayor - in many years prior as a council employee he was responsible for the tree planting on the fairly barren and shadeless foreshore – members, H. Randall, R. Russell, A. Cunningham, J. Stanley, A.E. Chave, J. Sands Town Clerk, A. Marsh, S. Greene, E.O. McNaught, G. Heymer, E.B. Port, and J. Hargreaves.

Myrtle Beitz, August 2005



Wynnum – 1912 Photo No 166 **Transport** – Rail - Wynnum to Cleveland – At this time the only existing photo in this collection of work concerning the building of the railway line from Brisbane to Cleveland with the branch line to Belmont which left the main Brisbane-Wynnum track just south of Norman Park in 1912

Myrtle Beitz, August 2005



Wynnum Photo No 167 **Transport** – Rail -This steam tramcar was used on the Belmont branch line which ran from the Cleveland line just south of Norman Park Station to the Belmont terminus. This terminus was located some 400 metres on the Brisbane side of the Belmont State School. The tramcar proved to be unsuitable for the work expected and was replaced by a standard type steam engine. *Myrtle Beitz, August 2005*



Wynnum – 1921
Photo No 168
Creek – Events - Opening of
Fox Street Bridge by Hon.
J.A. Fihelly, M.L.A.,
Treasurer and Minister for
Works. Mayor of Wynnum at
the time was Alderman
Richard Russell. The building
took four year to complete as
the original contractor became
bankrupt, thus new tenders
had to be called. Over the
years the strong construction
and unique design has enticed
many artists to capture the
image on canvas. Note the
absence of mangroves and the
low clearance for boats to
continue upstream.

Myrtle Beitz, August 2005

FOX ST BRIDGE, WYNNUM.

OPENED ON JULY 6th 1921 BY THE
HON. J.A. FHELLY, M.L.A.
(TREASURER & MINISTER FOR WORKS)

MAYOR ALD. R. RUSSELL.

ENGINEER FOR ABUTMENTS. | CHIEF GOVERNMENT INSPECTOR OF
J. KEMP, A.M.I.C.E. | WORKS, **W. T. JACK,**



Wynnum – 1910-20

Photo No 169

Beachfront – View - Esplanade The photographer, appears to have been on a boat at sea to capture the increasing number of houses appearing on land on the eastern slopes from Bay Terrace. The increase in the building of houses followed the coming of the railway line through to Cleveland in 1889. The vacant land would be the Water Reserve where campers holidayed. The building to the left of the tall tree would be the Roman Catholic Church.

Myrtle Beitz, August 2005



Wynnum – 1918-19 Photo No 170

Parades - Bay Terrace –Events - Photo taken from Florence Street corner records a Victory Parade moving north along Bay Terrace at the end of World War I. not all properties between Florence and Edith Streets were business houses at this time. The large camphor laurel tree stands in the grounds of the Finlay home, between Edith and Florence Streets.

Myrtle Beitz, August 2005

Dad's Riverside House



Wynnum – 1914 Photo No 171 **Creek - Buildings** - a good example of the style of home built for people in Queensland near the turn of the century. This home is on the south bank of the Wynnum Creek near the mouth. In the year 1988 John Robinson attains the house but many alterations by various previous owners has changed its appearance. Note the timber retaining wall of the creek The creek bends upstream at this point to the Fox Street Bridge.

Myrtle Beitz, August 2005



Wynnum – 1922 Photo No 172

Creek – Buildings - the photographer stood on the north bank to view the mouth of the creek looking south capturing this beautiful old home sheltered by the trees and Jetty No. 2 is in the distance. - note the absence of the stone wall going out to sea. The dredging of the creek in 1938 soon silted up so the Council decided to build the stone wall which was completed in 1940.

Myrtle Beitz, August 2005



Wynnum – 1987 Photo No 173 **Brisbane River – Boats** - This visiting tall ships to Brisbane River on 30 December 1987 was a fine example of a Chinese Junk.

Myrtle Beitz, August 2005



Wynnum – 1987 Photo No 174 **Brisbane River – Boats** - visit from tall ship *The Eagle* on 30 December, 1987. This photo also records some of the scores of small vessels of all shapes and sizes that converged at the mouth of the Brisbane River to escort the vessels to their Newstead berths. *Myrtle Beitz, August 2005*



Wynnum 1987 Photo No 175 People walking on the newly created sandy beach at the opening of Pandanus Beach 26 September 1987. Landmark Industries brought 7200 cubic metres of sand to the foreshore under contract to the Brisbane City Council for an approximate cost of \$210,000.



Wynnum – 1987 Photo No 176

Beachfront – Events - Esplanade – The Council handed out free trees to those who witnessed the opening of Pandanus Beach 26 September 1987. George Lockwood and Mrs Fitzgerald are in conversation. Pandanus Beach was so named by Ron Crouch when he won a competition for the name of this man-made beach.

Myrtle Beitz, August 2005



Wynnum – 1987 Photo No 177

Beachfront – Events - Esplanade – The Lord Mayor, Sallyanne Aitkinson, speaking to the large crowd assembled for the opening of Panandus Beach, 26 September 1987. *Myrtle Beitz, August 2005*



Wynnum – 1987 Photo No 178 - 7,200 cubic metres of sand brought to Pandanus Beach by Land Mark Industries under contract to the Brisbane City Council between June and September 1987. many children sampled the pleasures of Pandanus Beach on this beautiful Saturday morning when Pandanus Beach was opened 26 September 1987. *Myrtle Beitz, August 2005*



Wynnum – 1987 Photo No 179

Beachfront –Jetties – Events -The head of the stone jetty was used as a helicopter pad to provide fast trips to St Helena and five minute rides in a helicopter were among the activities provided at the opening of Pandanus Beach.

Looking down the stone jetty to the shoreline where work is being finished on the new sandy beach. The Lord Mayor, Sallyanne Aitkinson, opened Panandus Beach, on 26 September 1987

Myrtle Beitz, August 2005



Wynnum – 1987 Photo No 180

Looking down the stone jetty to the shoreline where work is being finished on the new sandy beach. The Lord Mayor, Sallyanne Aitkinson opened Panandus Beach, on 26 September 1987

Myrtle Beitz, August 2005



Wynnum – 1987 Photo No No 177

Beachfront – Events – Esplanade – Opening day of Pandanus Beach constructed by Brisbane City Council at a cost of \$210,000. A tranquil day for the opening when the Lord Mayor, Sallyanne Aitkinson opened Panandus Beach, on 26 September 1987

Myrtle Beitz, August 2005



Wynnum – 1987 Photo No No 182 **Beachfront – Events** – Esplanade - Opening day of Pandanus Beach constructed by Brisbane City Council at a cost of \$210,000. A tranquil day for the opening when the Lord Mayor, Sallyanne Aitkinson, opened Panandus Beach, on 26 September 1987 *Myrtle Beitz, August 2005*



Wynnum – 1987 Photo No 178

Beachfront – Events - Esplanade – Lord Mayor Sallyanne Aitkinson admires the pandanus palm trees she has just planted.

Myrtle Beitz, August 2005



Wynnum – 1987 Photo No 178

Beachfront – Events - Esplanade Andrew Cossens stands between the two planted pandanus trees at the opening of “Pandanus Beach” in September 1987. *Myrtle Beitz, August 2005*



Wynnum – 1987 Photo No 185

Bay Terrace – demolition of the old shops at the corner of Florence Street and Bay Terrace to make way for the building of “Franklins”

Wynnum Central School can again be seen from Bay Terrace, but only for a short time.

Myrtle Beitz, August 2005



Wynnum – 1986 Photo No 186

Schools – Buildings - Bay Terrace – Moreton Bay Girls' College in preparation for removal

Myrtle Beitz, August 2005



Wynnum – 1986 Photo No 187

Schools – Buildings - Bay Terrace – Moreton Bay Girls' College in stages of removal to a location at Pullenvale. 1987 saw the construction of Franklin's Shopping Complex on the Corner of Bay Terrace and Florence Street

Myrtle Beitz, August 2005



Wynnum – 1986 Photo No 188

Schools – Buildings - Bay Terrace – Moreton Bay Girls' College in stages of removal to a location at Pullenvale. 1987 saw the construction of Franklin's Shopping Complex on the Corner of Bay Terrace and Florence Street

Myrtle Beitz, August 2005



Wynnum – 1989 Photo No 189 **Boats - Brisbane River** - The P & O's *Royal Princess*. She first visited Brisbane in 1986.



Wynnum – 1914

Photo No 190 Joe Curtis had a keen interest in municipal affairs and was on the Kianawah Divisional Board. 1905 elected a councilor in the Wynnum Shire Council and in 1911 was chairman of the Council and mayor in 1914

Myrtle Beitz, August 2005



Wynnum – 1912 Photo No 191 **Beachfront – Buildings – Jetties - Esplanade** – between Charlotte and Florence Streets on the beachfront the two storey bandstand, built 1912. Site of Pandanus Beach created in 1987. See also No 111.

Myrtle Beitz, August 2005

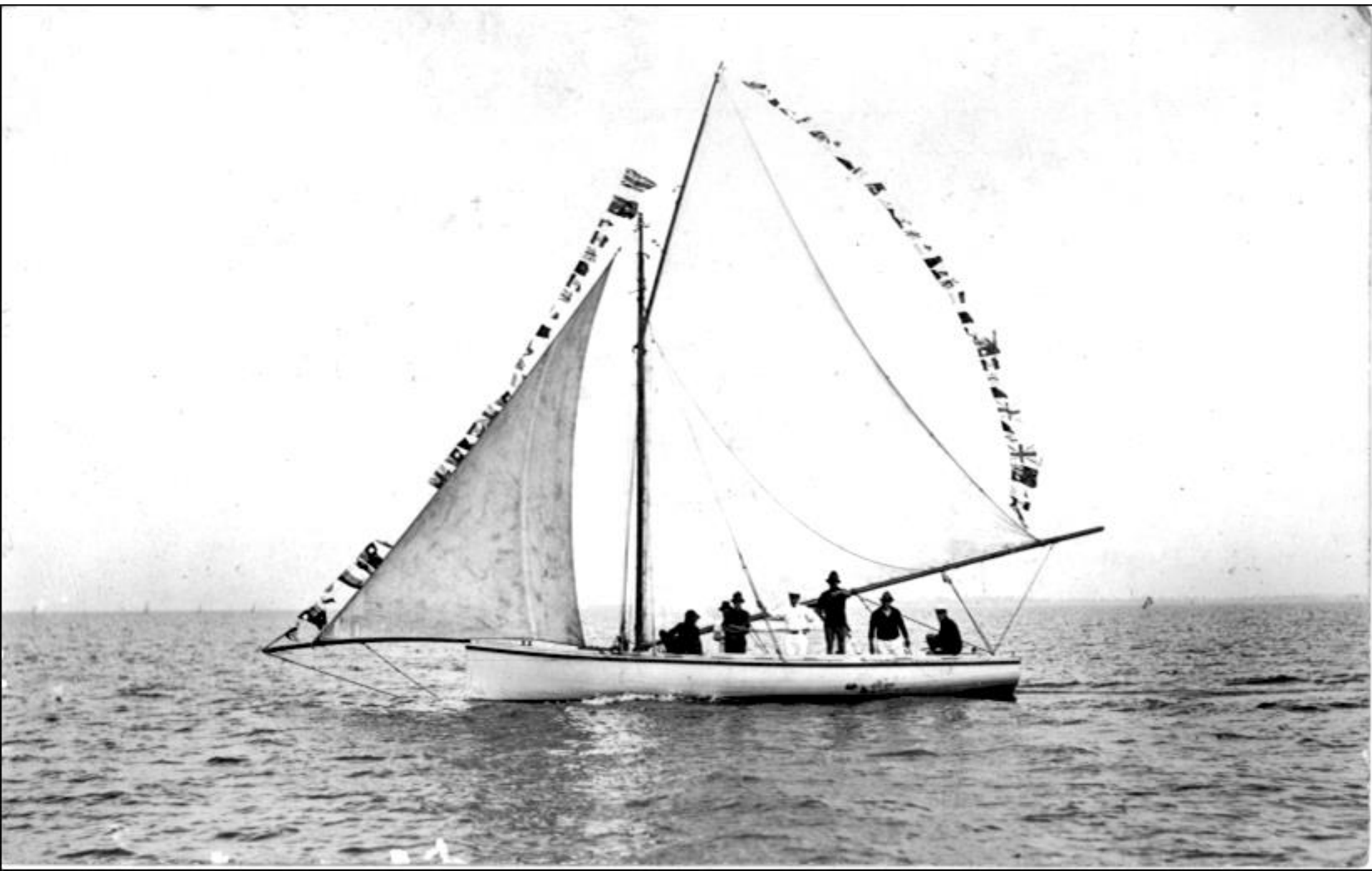


Wynnum –1921 Photo No 192

Creek – Bridges – Events - Fox Street Bridge - First there was a narrow foot bridge then replaced by a wooden traffic bridge which the shopkeepers of King Street opposed thinking they would lose custom to the growing number of shops in Bay Terrace. This Fox Street Bridge was officially opened on 6 July, 1921 by the Hon. J.A. Fihelly, M.L.A., Treasurer and Minister for Works. The Mayor of Wynnum at the time was Alderman Richard Russell.

The construction took some four years to complete as the original contractor became bankrupt during the building of the bridge. New tenders had to be called to allow a new builder to proceed and finish the job. The bridge and its adjacent walls were of strong construction. Clearance is limited for fishing boats to proceed further up the Creek, subsequently boats waited till low tide to return to their berths.

Myrtle Beitz, August 2005



Wynnum – 1920s Photo No 193

Sport –Sailing – Boats - The type of sailing vessel popular on Waterloo Bay in the early 1900s. Seven crew members on this boat. Photo courtesy of E. Gunderson.

Myrtle Beitz, August 2005



Wynnum – 1927 Photo No 194 **Churches – Entertainment** - Randall Road Wynnum West – Church of England parishoners held an evening of entertainment to raise funds for the Church Hall on 30 July, 1927.

Photo courtesy of R. Short. *Myrtle Beitz, August 2005*