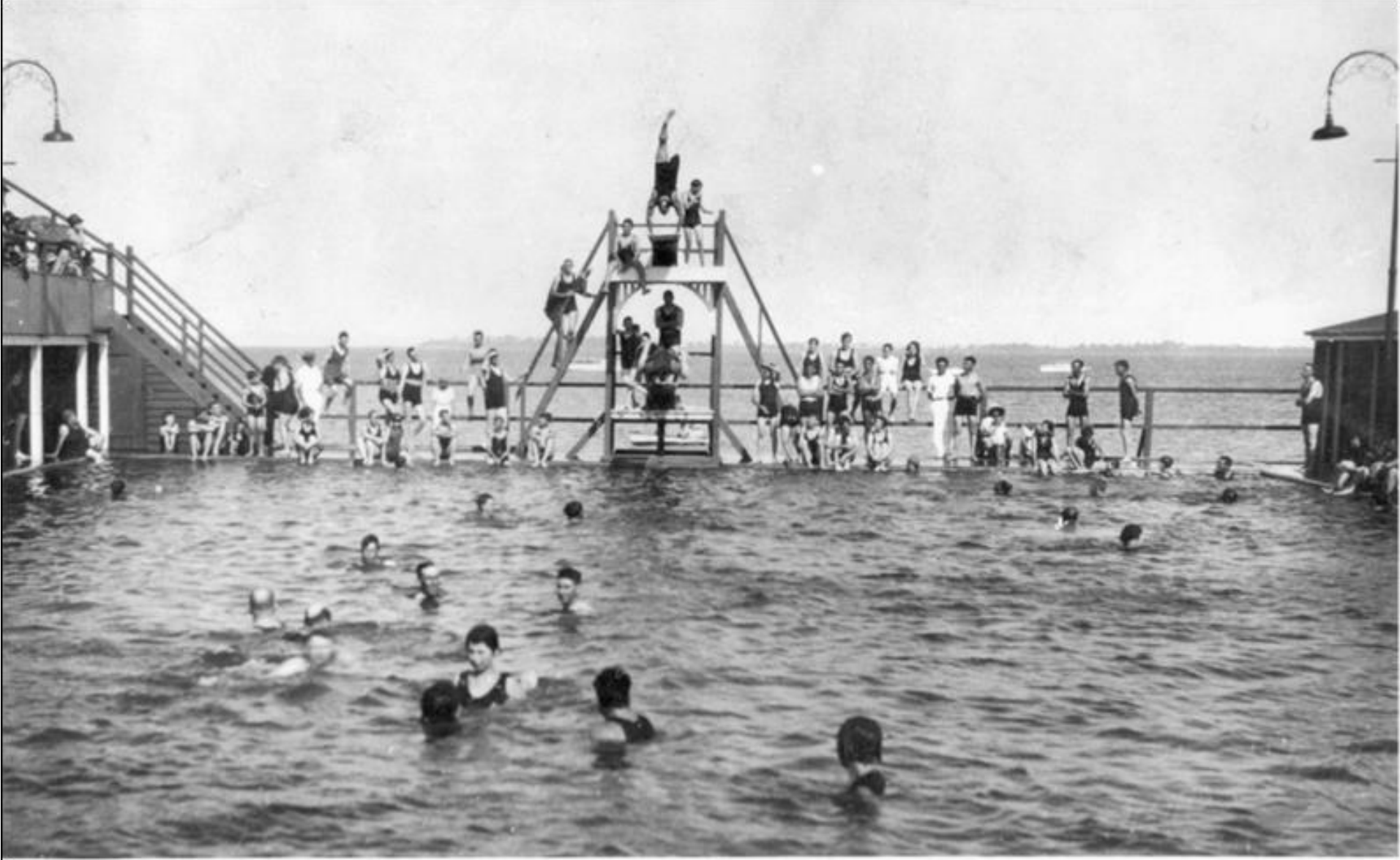




Manly – 1930s Photo No 1 Beachfront –Baths – Jetties - Esplanade, near Manly Jetty – usually every Monday salt water was pumped into the Manly swimming baths on the high tide - the Mayor, Ald W.A. Jolly officially opened on 25 September 1926. The registered masseur G.A. Kratzmann provided hot plunge salt tubs and also hot fresh tubs for those with various ailments. His treatment was assured to cure many muscular and other complaints.



Manly Photo No 2 Beachfront –Baths - Esplanade near Manly Jetty – a view of the Manly Baths showing the ocean end of the pool, containing the double diving board tower – the grandstand to the left was for spectators and sun-bathing and on the right the end of the changing boxes for the ladies – the gentlemen on the top board was known for his diving skills and remembered by many as the one-legged diver – the waters behind the pool now contain the many boats in the boat harbour.



Manly – 1920s Photo No 3 Beachfront – Jetties - Esplanade, south of the Manly Jetty – the jetty by this time boasted the bathing enclosure – separate times for the ladies and gentlemen as mixed bathing was still frowned upon by the local authorities – penny in the slot machines were installed at the kiosk – among them were the moving flicks, the electric shock machine, miniature hockey, and soccer games where two could play on the one machine. Sailing races were popular starting and finishing at the jetty enticing strollers to walk the jetty for a closer view of the races.



Manly Harbour 1977. The Manly pool can be seen. The area being filled will become the Manly Harbour Boat Club and Moreton Bay Trailer Boat Club.



Painting of Manly Jetty in 1977. Rescue Boat Dauntless is Docked. Donated by Rowena Shaw.



Manly – 1920s Photo No 4 Beachfront – Jetties - Esplanade near the Manly Jetty – marvellous days for visitors by sulky, buggies both open and covered and the odd motor vehicle - some people could have arrived at Manly by train and transported to the beach by Mr Russell's cab or walked - close examination show a T Model ford just to the right of the shelter shed and a sedan type vehicle in front of the shed just above the middle post, which is at the bottom of Cambridge Parade.  
Strolling on the jetty was a great chance for all to show off their latest fashions - the curved pole near the right-hand side tree seems to be for a gas lantern.



Photo No 5 Transport – Road - Lota – Manly – Wynnum In March 1926 the Black and White Bus Service commenced operating from Lota, through Manly, Wynnum and on to North Quay Brisbane via Wandall Road – Vic Lewis the proprietor drove while Mrs Lewis collected the tickets – from its size it looks as if the bus would carry about 15 passengers – the journey to Brisbane took approximately 1 hour and 30 minutes to complete.





Beachfront – Bathing Boxes - Esplanade looking south from Cambridge Parade Corner to Lota – a quiet day only one horse and cart plus owner can be seen – in 1890 a Mrs Harris received permission from Council to build a changing box at the bottom of Cambridge Parade to build one – no doubt one of these could be the one requested by Mrs Harris – the road would most probably only ventured as far as Mr William Duckett Whites property line at this time. Continued to Lota after land was donated by Duckett White in 1913.



Manly – 1910 Photo No 7 Beachfront – Jetties - Esplanade at foot of Cardigan Parade Corner already had a number of residence close to the jetty – the two buildings with chimneys were still standing in 1987 – the one on the Esplanade was a popular boarding house and eventually had a general store erected on the corner and right in front – the house further back was the boyhood home of Eric Shaw a one time member of Parliament for the Manly district, demolished in 2003 – the hill behind stretching to Carlton Terrace and Gordon Parade is nearly bare of buildings.



Manly - 1920s Photo No 9 Beachfront - Esplanade south of Jetty - here we have a large number of happy bathers - men were still using the one piece costume while the ladies were sure to have their "neck to knee" outfits - very long dresses and sunshades were still in vogue with the ladies - the long arm of Wellington Point can be seen at the top of the picture.

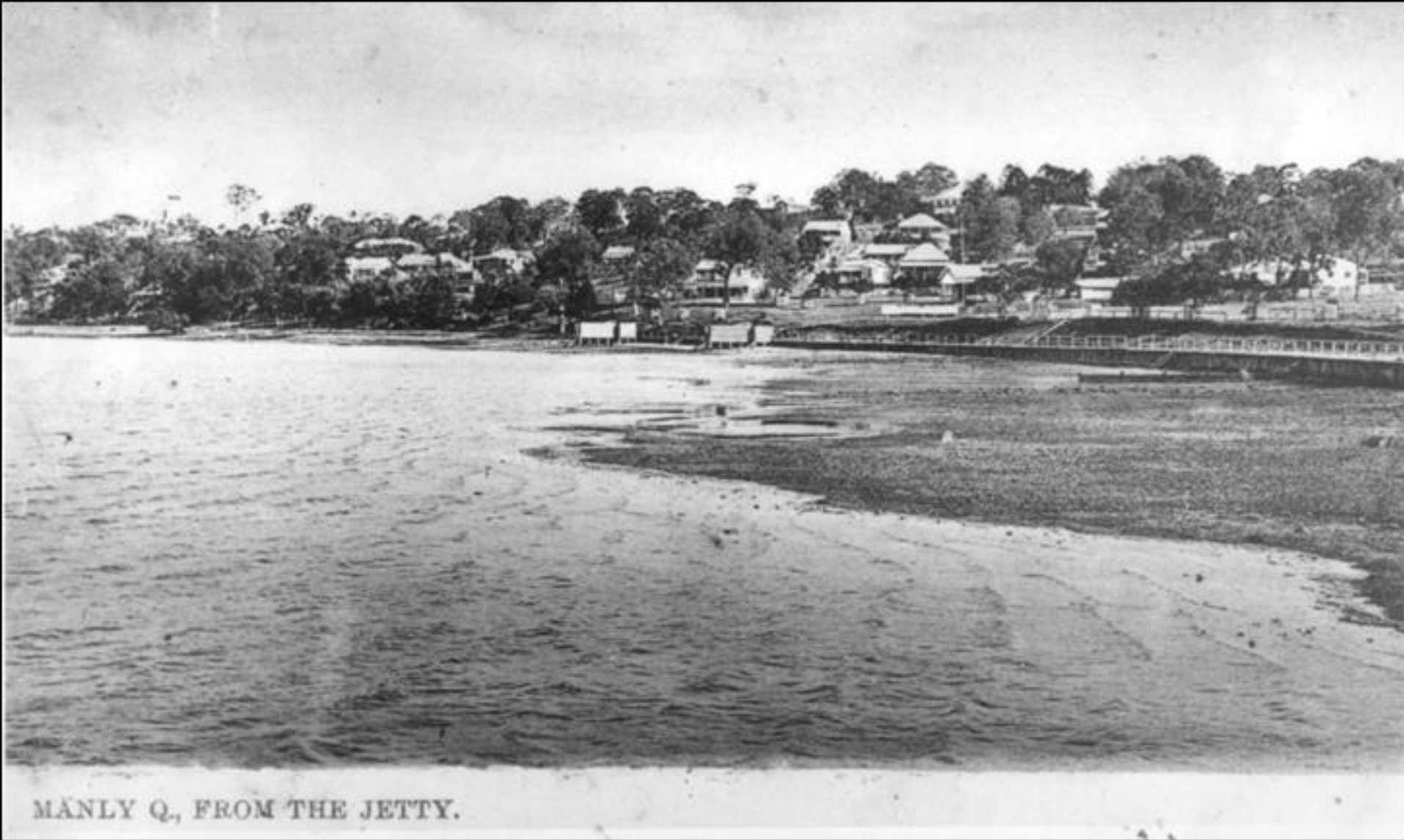


The Pier, Manly, Q.

Manly – 1920s Photo No 11 Beachfront – Jetties - Esplanade –Kiosk and swimming enclosure at end of Jetty – all eyes seem to be fixed on something out to sea so it can be assumed some very important sailing race is in progress – three gentlemen are standing on top of the railing for a better view of the proceedings – one very large motor boat is about to leave somewhat overcrowded – here is proof of the popularity of both Wynnum and Manly’s jetties during lovely summer holidays and warm week-ends.



Manly 1978 Photo No 12 Shops - Cambridge Parade — a very busy street with all shops occupied and open for business – grocery shops, butcher, newsagency, cafes, chemists were all easy to find – the paper shop of T.H. Dean shows the “Courier” cost 1d, the “Daily” 1d. – these two papers were joined to become the “Courier Mail – take note of the buildings which have verandas extending for some distance over the footpath – this makes Cambridge Parade rather unique - this etching by Rick Morrison was drawn from this photo for inclusion in Mangroves to Moorings in the year 1982 written by Merv Beitz for the Manly Centenary.



MANLY Q., FROM THE JETTY.

Manly – 1917-20 Photo No 23 | Beachfront – Bathing Boxes -This black and white Post Card was produced in the early growth of the area before 1920. It portrays the view looking south from the Manly Jetty at low tide and a deserted Esplanade. The infant bathing boxes are at the foot of Spring (Falcon) Street. Protective railings were placed along the retaining wall. Little did the people holidaying along the water's edge contemplate this area would turn into the famous Manly Boat Harbour. The Manly Beach Kiosk (centre of the photo) was situated at the beach end of Jane (Benalla) Street on the southern side facing the Esplanade.



Manly Photo No 12 Transport – Rail - the “steamy” days of Manly Station are recalled in this view of some three steam engines at the station at the same time – one is arriving from Lota, one is waiting for the Lota train to move on so it may proceed to the turntable to be reversed for its next journey to Brisbane, and the third is just visible under the footbridge being turned about on the turntable.



Manly - 1900s Photo No 13 Beachfront – Jetties - View from Manly Jetty reveals the growth of a number of seaside houses – many of the early buildings were erected as holiday homes only – with the opening of the train line to Manly and Cleveland by 1889 crowds flocked to all the local beachfronts on Saturdays and Sundays, but many of the visitors had decided that cottages would be popular for longer holidays both for themselves and for those wishing to rent.



Manly (Qld.)—The Esplanade,

*(T.H.D. Series.)*

Manly – 1900s Photo No 14 Beachfront – at foot of Cambridge Parade – evidence of care and attention shown by the civic fathers of the infant Wynnum Divisional Board was given with the planting of shade trees shown here with guards to protect them from the wandering stock.



Manly – 1887 Photo No 15 Land Sale - etching taken from a brochure produced for the 1887 sale of more Manly Estate blocks by Arthur Martin & Co auctioneers – to encourage attendance of many buyers, free passage to Manly from Brisbane by the steamer “Kate” was offered plus a first-class luncheon, also free light refreshments were supplied.



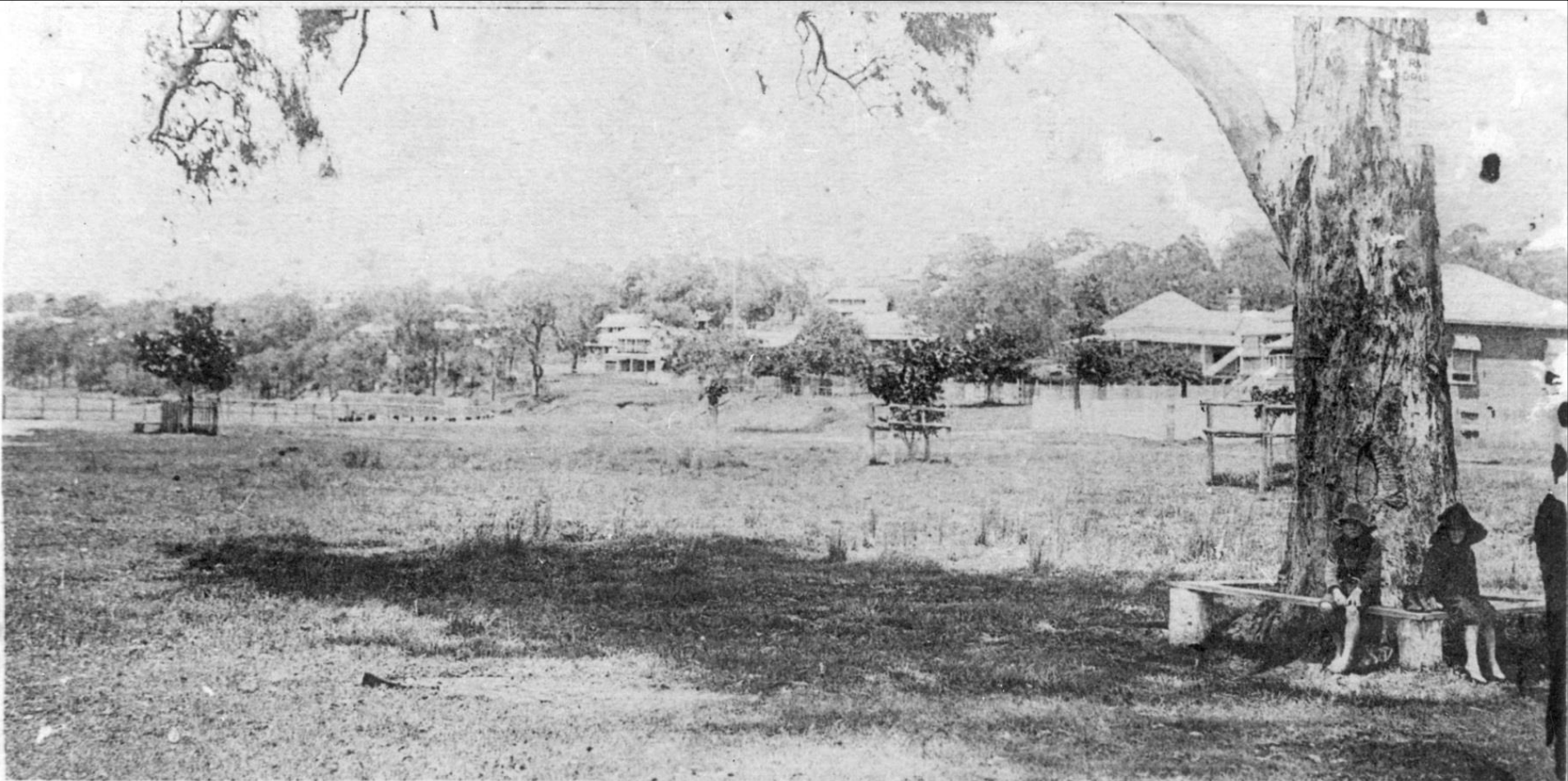
Manly – 1954 Photo No 16 Shops - Corner Stratton and Cardigan Parade – this shows the burnt out remains of a butcher's shop and Critchley's cash and carry store – some years before this site had been occupied by a Miss Banks as a draper's store followed by a lending library conducted by a Miss Crisp.



**Manly – 1920s Beachfront – Jetties - Esplanade**, south of the Manly Jetty – the jetty by this time boasted the bathing enclosure – separate times for the ladies and gentlemen as mixed bathing was still frowned upon by the local authorities – penny in the slot machines were installed at the kiosk – among them were the moving flicks, the electric shock machine, miniature hockey, and soccer games where two could play on the one machine. Sailing races were popular starting and finishing at the jetty enticing strollers to walk the jetty for a closer view of the races.



**Manly – 1906 Beachfront – Bathing Boxes - Esplanade** looking south from Cambridge Parade Corner to Lota – a quiet day only one horse and cart plus owner can be seen – in 1890 a Mrs Harris received permission from Council to build a changing box at the bottom of Cambridge Parade to build one – no doubt one of these could be the one requested by Mrs Harris – the road would most probably only ventured as far as Mr William Duckett Whites property line at this time. Continued to Lota after land was donated by Duckett White in 1913.



Manly (Qld.)—The Esplanade,

*(T.H.D. Series.)*

**Manly – 1900s Beachfront** – at foot of Cambridge Parade – evidence of care and attention shown by the civic fathers of the infant Wynnum Divisional Board was given with the planting of shade trees shown here with guards to protect them from the wandering stock



**Manly – 1910-15 Beachfront – Camping** - Christmas holidays saw the erection of many tents on any available flat site between Cambridge Parade and Benalla Street – the road to Lota did not come until Mr. Duckett, son of William Duckett, cut up part of the White property in 1913 – barbed wire fencing ran down the hill from the White property to the water's edge – access to Lota by the beach was impossible – with those visitors without tents of their own, Paton's store would see to the erection of a rented tent on the beach.



The Pier, Manly, Q.

**Manly – 1929 Beachfront – Jetties** - looking south towards Lota House – many visitors on jetty no doubt to view the start and finish of the sailing races – Manly Boat Harbour commenced in 1958 has taken up this area south of the jetty.



**Manly – 1900s Shops** - Looking along Stratton Terrace towards Cardigan Parade Corner – the shop on the left displays the name "Savage" could well have been the first store to serve in the new Manly Beach Estate – this same shop was to become part of Smith's Bakery and when finally demolished made way for the car park for the two storied office buildings completed in 1985 – in the far background can be seen Curtis's store while behind the horse and sulky is the corner store of Mr. Richard Russell – in the very centre of the photo can be seen a gas street light pole while very close could be a telephone post.



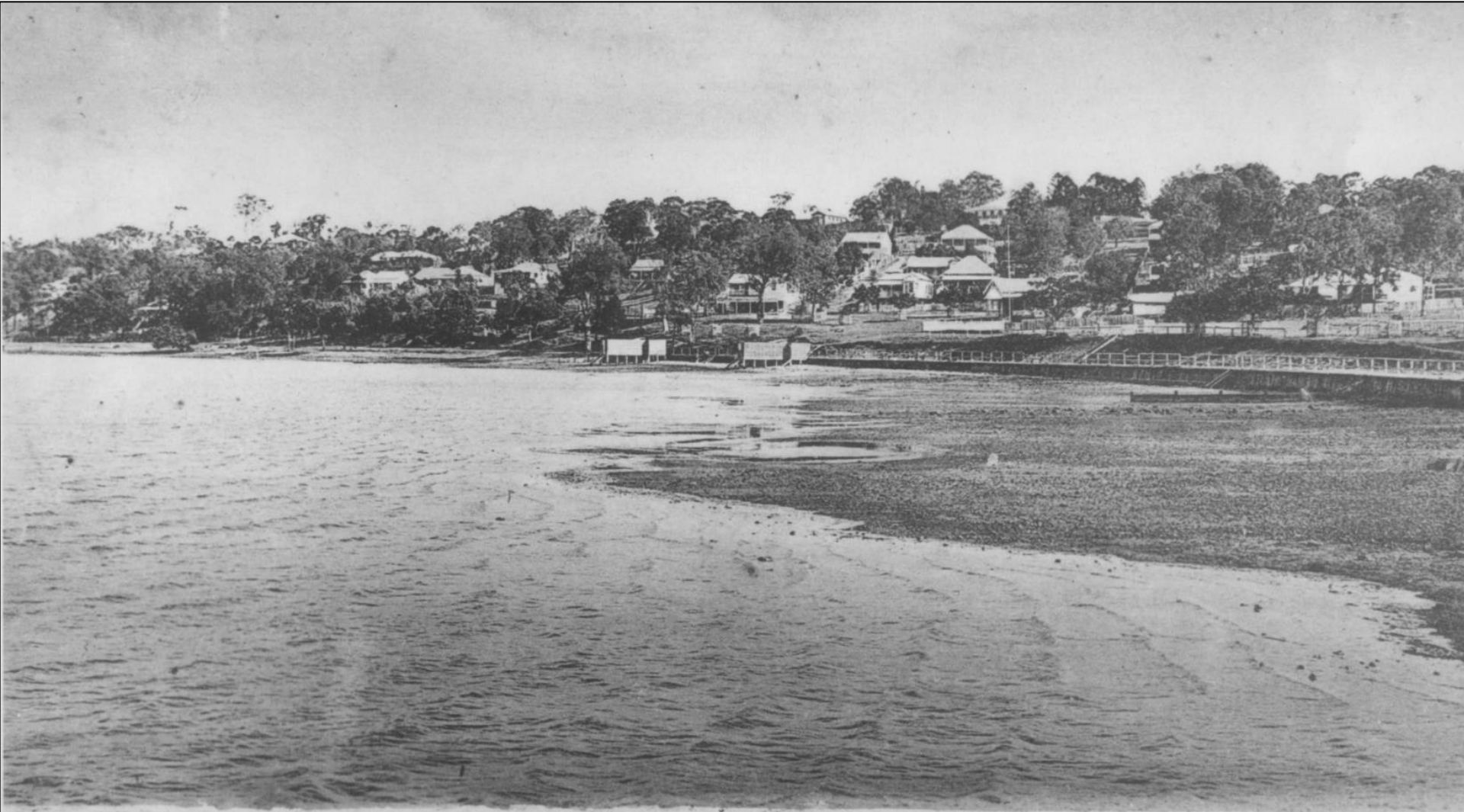
**Manly Characters – Local Authority** - Richard Russell conducted an early store and dance hall at the corner Cambridge Parade and Stratton Terrace – he also was the first Cab Proprietor, an Alderman and twice Mayor in the years 1919 and 1920 – over the years he acquired large holdings in Real Estate.



**Manly Show –Traders:** F.J. Smith from Smith's Bakery poses for the photographer displaying the ribbons won at the first Wynnum and Manly Agricultural, Horticultural and Industrial Show held at Russell Park (Memorial Park) in 1919. Mr Rice's tender of £670 to erect the grandstand accepted by the Council. Captured German guns were placed in front of the Grandstand by Sir Matthew Nathan at opening of Show in 1922 - the stand was burnt to the ground soon after the High School was built - approximately 1945.



**Manly Buildings – Characters** - Benalla Street – The Manly Beach Kiosk – Miss Crutchfield was the proprietress – holiday makers and visitors frequented the store for supplies and were able to enjoy refreshment of tea coffee and sandwiches etc. – it is possible that a Mr. Ernest Taylor, carpenter and builder of Norman Park whose sign stood on the roof had been responsible for the construction of the tea garden.



MANLY Q., FROM THE JETTY.

**Manly – 1917-20 Beachfront – Bathing Boxes** -This black and white **Post Card** was produced in the early growth of the area before 1920. It portrays the view looking south from the Manly Jetty at low tide and a deserted Esplanade. The infant bathing boxes are at the foot of Spring (Falcon) Street. Protective railings were placed along the retaining wall. Little did the people holidaying along the water's edge contemplate this area would turn into the famous Manly Boat Harbour. The Manly Beach Kiosk (centre of the photo) was situated at the beach end of Jane (Benalla) Street on the southern side facing the Esplanade.



Manly (Qld.)—The Principal Street.

*(T.H.D. Series.)*

**Manly – 1900s Streets – Shops – Post Cards** - Stratton Terrace looking north across Cambridge Parade – Mr Russell's store on the corner – most probably the horse drawn vehicle outside is that of Webster's Bakery – Mr Haylock at this time would obtain bread from Hemmant after being delivered from Brisbane, then distribute to the district's shops – besides Mr Russell's store is the Manly Hall known at Paton's Hall – Mrs Paton also ran a general store – the vacant corner became Mrs Todd's guest house before the Manly Hotel occupied the site, further down is Curtis's store before coming to the drapery shop on the next of corner Cardigan Parade – directly opposite the drapery was the Hardware shop of Mr G. Savage later Smith's bakery.

*Myrtle Beitz, August 2004*



**Manly – 1930s Beachfront – Jetties** - taken from a property in lower Wellington Street the photographer was recording the beachfront from Benalla Street looking to the jetty in the distance – by now the Manly salt water baths were built and opened by His Worship, the Mayor, Ald. W.A. Jolly on September 25<sup>th</sup> 1926 near the entrance of the jetty.



**Manly – 1920's Jetties - Streets** - Waterloo Street (Kooralgin) – a view looking towards the Manly jetty to the islands of St Helena and Green – tenders were called for the building of the kiosk and pavilion in September 1915 – the boat shed is on the north of the jetty.



**Manly Streets – Jetties - View** - from top of Kooralgin Street – bathing boxes have been built on the foreshore – this same area became safe anchorage for hundreds of craft in the Manly Boat Harbour which commenced to be built in the early part of 1958.



**Manly – 1920's Beachfront – Jetties – Post Cards** - The shady trees provide shade for a couple of sulkies – town water has not yet been installed – water tank here on the left is filled from roof of a shelter shed – well dressed gentlemen – some have removed their coats – most are wearing the customary white sandshoes worn when walking on or near the beach – the protective railing is above the retaining wall.



**Manly 1910-15 Beachfront – Camping** - Esplanade - Artist does not record the location – the well known shape of Bell tents are in the majority – all transport is strictly horse drawn.



**Manly – 1915-20 Beachfront – Bathing Boxes** - Esplanade, between Cambridge and Benalla Street looking north to Manly Jetty – a busy day in front of the original changing boxes – very early motor cars are plentiful – navigational beacon is located on slope.



**Manly – 1883 Characters** – Jimmy and Mary Arnold of Wyvernleigh - the Arnold Brothers subdivided a large amount of their land which brought about the birth of the Manly Beach Estate.



**Manly – 1920s Traders - Shops** - Stratton Terrace – Mrs J. Paton's General Store – this lady supplied tents for hire for campers on the beach – the shop was later occupied by the Senden family who moved from Wynnum - later they moving to Cambridge Parade – Mrs Paton also conducted a hall next door – eventually this site became the carpark for the Manly Mall.



The Pier, Manly, Q.

**Manly – 1920s Beachfront – Jetties** - on the Manly Jetty looking to the shoreline before the Manly Baths which were built in 1926 – increase in buildings compared with earlier photos.



**Manly 1912? – Bathing Boxes - Esplanade at foot at Spring Street (Falcon)** – vehicles could not proceed any further than the property line of the Whites before 1913 – it was in 1913 that Duckett, son of William Duckett, White cut up a section of his land giving a large portion to allow parkland and a road to be built along the foreshore.



**Manly 1916** - Esplanade –looking north from Falcon Street – this stretch of the newly formed road towards Lota was referred to as 'lovers walk' – the sea wall does not appear to have reached the cotton tree – private bathing boxes are in view.



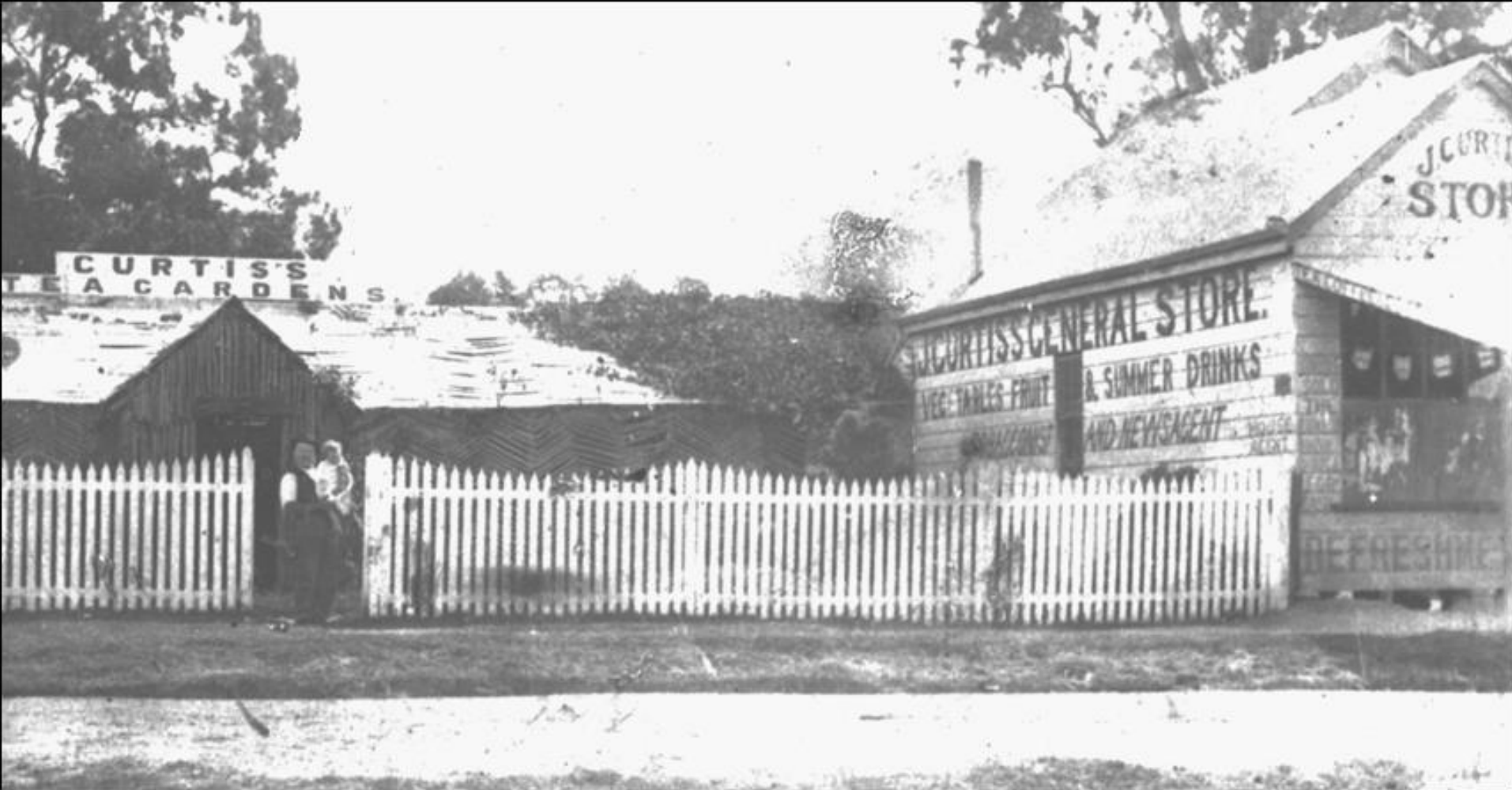
**Manly Characters** – Thomas Jones – 1832-1873  
of Wyvernleigh plantation – the first land owner  
and builder of Manly's first house, a stone building  
on Ernest Street Hill, later the site of the Roman  
Catholic Church



**Manly Characters – Traders** - The Curtis family posing in front of their Manly tea rooms – Brisbane visitors who alighted at Manly Railway station took the route to the beachfront down Cambridge Parade past all the quaint shops – like the scones and cakes the structure of the tea rooms were all home made – saplings would have been cut with an axe from the bush then carted by horse and cart to erect this building – even the roof is made of shingles of wood.



**Manly 1925** - View of Darling Point – the photographer was standing on the heights above the beach somewhere near Kooralgin Street – some houses but very little sign of any tall or spreading trees.



**Manly 1900** Stratton Terrace and Cambridge Parade – Curtis’s Tea Garden and General Store – Mr J Curtis is standing in the gateway holding of or his daughters – in later years the tea gardens were removed to make way for a large new building with a grocery store on the ground floor and the Curtis residence on the upper floor – this building with its verandahs out over the footpaths on both streets – later became a take-away café, T.A.B. , dentist and aquarium supplies and backpackers lodgings as various times. *Myrtle Beitz – August, 2004*



**Manly 1910** – a good example of the type of sailing craft built for use on Waterloo Bay in the first part of this century – look carefully behind the folded sail at the beachfront to see the cotton trees that grow in the same spot after all these years with alterations to the foreshore – one story tells us that George Cooling (Dirty George) the photographer lived beside these trees in an upturned boat after he sailed in from Carbrook and the Logan River – the cotton trees are close to the Falcon Street and Esplanade corner.



**Manly late 1920s** Stratton Terrace – south of Cambridge Parade corner on beach side of Stratton Terrace - Mr T. H. Senden's store (previously owned by Mrs Paton) – when Mr Senden moved into Cambridge Parade next door to the Canberra Guest House this shop became a billiard room.



**Manly 1912** - Esplanade looking south from Benalla Street – campers are making use of the small amount of flat ground – there is no retaining wall as yet at this section – well dressed campers with their white shirts and ties. *Myrtle Beitz* – August, 2004



**Manly 1978** - Cambridge Parade – the main street looking towards the beach – does not show a great deal of change from earlier photos – Curtis's store and residence extends over the footpath as does other shops on the left – Mrs Todd's Canberra Guest has been replaced by the Manly Hotel – and there is a garage on the lower corner in Stratton Terrace.



**Manly 1959** - Manly Baths after a savage wind and lightning storm – the sheer power of the wind blew one side of the changing boxes into the pool causing embarrassment to a young lady within – this storm caused damage throughout Manly and also to the Manly Hotel