



Wynnum – 1910 Photo No 40 **Jetties - Beachfront** –Jetty No 2 - crowds came by horse & buggy, train and car to spend time at the Wynnum Beachfront - strolling on the jetties was popular - here the ladies and gentlemen show off their latest clothing and fine head gear - Gas lighting enabled night swimming at the tidal baths – mixed bathing was not permitted - Council by-laws of 1918 Chapter 17 Nos 5 & 6 read *The public baths and dressing boxes shall be open on certain days for men and boys only. Other days, determined by the Council, were for women, girls and boys under 5 years of age.* Myrtle Beitz, August 2005



Wynnum Photo No 41 **Creek** - Wynnum Creek looking down stream - this is a very early view of the area near the mouth of Wynnum Creek exact date unknown -the photographer could have been standing on the first vehicle bridge connecting Fox Street to the southern bank in 1899 - the allotment just above the boy on the seat was near the rear of the Police Yard lockup and the house could be that of Mr Brimblecombe – mangroves are in this photo but there is a lack of them in the photos of the opening of the second traffic Fox Street Bridge built in 1921.

*Myrtle Beitz, August 2005*



Wynnum Photo No 42

**Creek** - a small footbridge connected St Catherines Terrace to Creek (Coreen) Street on the western side of Wynnum Creek - this first structure was on single plank supported by single piles - Chairman A. Cunningham of Wynnum Town Council lived in St. Catherines Terrace - the crossing was referred to then as Cunninghams Gap – Alex Cunningham served on the Kianawah Divisional Board as chairman in 1888 and 1889 again Chairman of the Wynnum Divisional Board in 1892, 1896 and 1899. *Myrtle Beitz, August 2005*



Wynnum — 1920-30s Photo No 43

**View** -taken from Tingal Hill this view includes the area from Jetty No 1 to Darling Point - no signs of any electricity poles but there is the odd telephone post - most houses are new or in good condition - the area on left was known as 'Black's Camp' purchased by the council in 1908- afterwards in 1933 Beach End which appeared on official maps but was not widely used by locals, the council renamed the area Elanora Park, meaning *camped by the sea* in 1976 - in c1916 this area was used as a rifle range - quite a number houses and shops are clustered near the mouth of the Creek.

*Myrtle Beitz, August 2005*



Wynnum –1923 Photo No 43 **Transport - Beachfront** –Mrs T.J. Murray and her daughter Agnes at the wheel in their latest Chevrolet sedan – in 1923 speed limit on the Esplanade was 10 miles per hour, 12 miles per hour on other district roads. *Myrtle Beitz, August 2005*



Wynnnum 1920s Photo No 44 **Industry – Bakery Transport** - - Edith (Emsworth) Street, west of the railway line — Webster's delivered bread from Brisbane to Hemmant in the late 1890s from where Mr Haylock brought it to Wynnnum - Pavey's first bakery was at Hemmant, then Mary (Berrima) Street - after some time away from the district Mr Pavey in partnership with Mr Bolland returned to conducted this bakery in Edith (Emsworth) Street.

*Myrtle Beitz, August 2005*



Wynnum – 1920s Photo No 46

**Shops - Industry** – Printing - Tingal Road – railway side between Edith Street and Clara Street - L to R Mary Lockwood's sister, Stanley, Mary Lockwood and William Lockwood standing outside the Moreton Printing Works established in 1914 –The Lockwoods pioneered the printing trade in the district – the business became known as W. Lockwood & Sons Pty Ltd to include their sons George and Stanley - First four-page issue of the Herald rolled off the press on 31 January 1946

*Myrtle Beitz, August 2005*



Wynnum – 1930s Photo No 46

**Buildings - Entertainment – Industry** –Junction of Preston Road, Wondall Road, Worthing Street and West Avenue - later the fountain which stood in front of the City Hall Brisbane was installed within the round-about at this junction - when turned on it proved hazardous during windy days so now the water never flows - in this photo The Corner House Service Station shows gravity fed bowsers - Attached is *Capilana* a nightclub and reception centre frequented by American service men during World 11 which catered for late night suppers, wedding and special occasion celebrations - *Capilana* was burnt to the ground some time after 1955.

*Myrtle Beitz, August 2005*





Wynnum – 1915 Photo No 48

**Industry** - Tingal Road - Slaughter yards during 1915 were conducted by The Treffall family - later the business passed to the Uhlmanns – in 2005 it is the site of G & B Motors and close to the Kitchener Memorial.

*Myrtle Beitz, August 2005*



WYNNUM – 1929 Photo No 50 **Transport** – Buses - **Bay Terrace** –Local bus travelling south to Lota – a Mr. Smith is believed to have started the Local Bus Service which was taken over by the Black & White, then Mr Knight who sold to Andrew & Kathleen Geraghty who operated from 1928 to 1945 after the Geraghty ownership Mr Beaumont took the wheel before Mr Monaghan who sold to the Bayside Buses – commencing at Coolana Street Lota and terminating at Prospect Street – Adult fare was 3d. a section and children 1½d. – a service was also provided for the many district functions such as dances, fetes, Anzac Day etc. – during the war years an additional bus transported troops on leave from Lytton to Wynnum and Manly – A daily service also carried the meat workers to and from the abattoirs — Mr Bob Carmichael ran a local bus at some time. *Myrtle Beitz, August 2005*



Wynnum – 1922 Photo No 51 **Services – Fire** - Mountjoy Terrace – at head of Wolsey Parade – following the gradual installation of a town water supply the district could think of establishing a Fire Brigade Unit – this first fire station was built and opened on 25 August 1921 – this photo of 1922 shows the fire brigade Captain and other volunteer firemen proudly posing for the photographer with the new engine  
*Myrtle Beitz, August 2005*



Wynnum – about 1910 Photo No 52

**Beachfront - Transport - Services** –George Heymer and passengers in one of his hansom cabs - note the kerosene lantern ready for night driving – Mr Heymer’s uncanny luck in buying winning tickets made friends anxious to buy ticket shares with him in the Golden Casket from his newsagency in Tingal Road near the Wynnum Central Railway Station from where the hansom cab would wait for prospective customers arriving on the train.

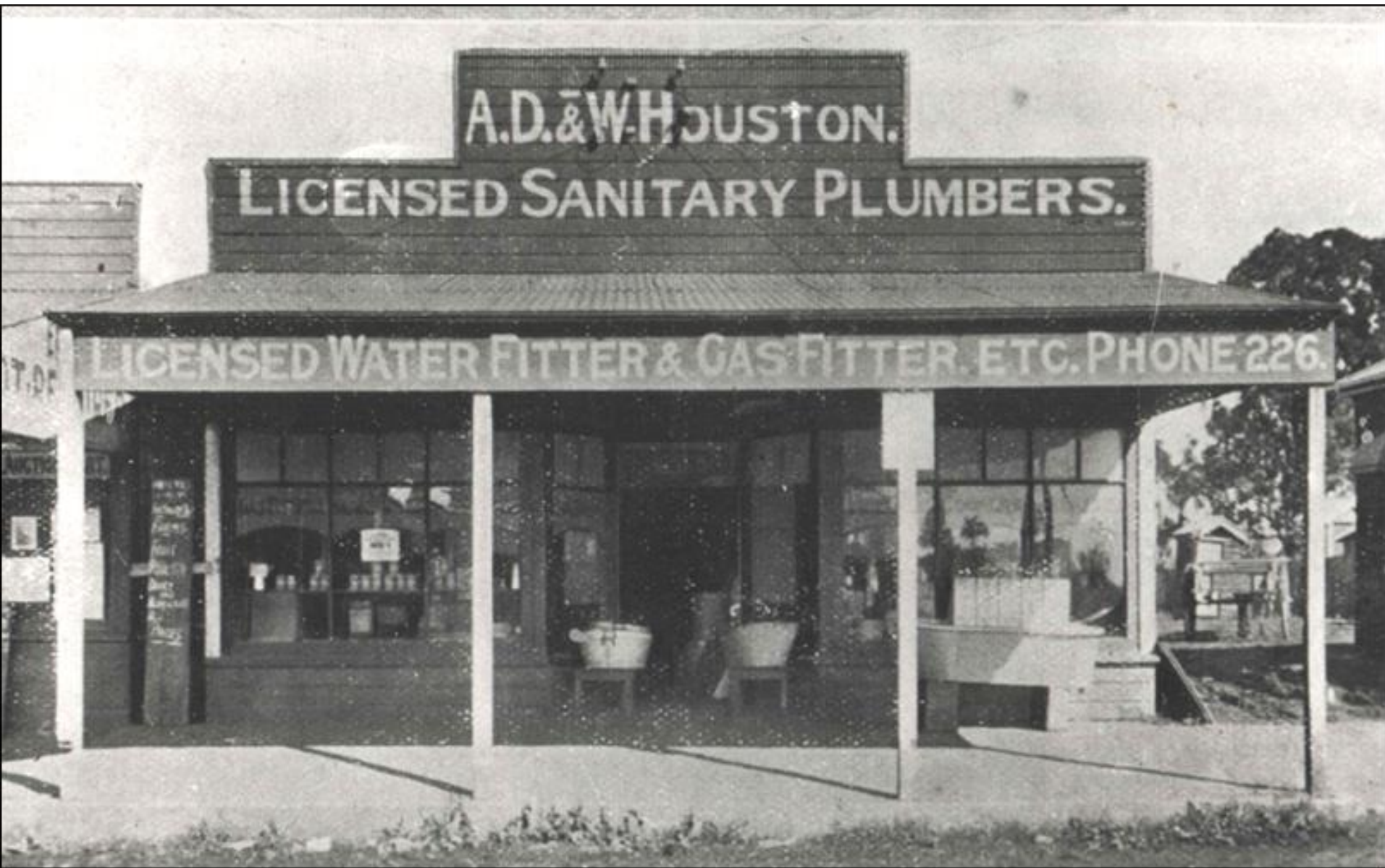
*Myrtle Beitz, August 2005*



Wynnum -1922 Photo No 53

**Shops - Buildings** -corner store - Tingal Road - northern corner Florence Street, beachside of railway line - opposite Heymer's newsagency - corner shop with Scales & Co as occupants - a corner doorway was the usual entrance to these store - the boot maker Mr Blake and family occupied the house next door at this time

*Myrtle Beitz, August 2005*



Wynnum -1922 Photo No 54

**Bay Terrace - Shops - Buildings** -Houstons the plumbers were mid way between Edith Street and Florence Street on the railway side of Bay Terrace - the shop became part of the larger complex occupied by Rockmans.

*Myrtle Beitz, August 2005*



Wynnum – 1884 Photo No 55 **Land Sales - Advertising** –Early sales of land east of the railway line only by J. Cameron on Saturday 24 May 1884 for the East Wynnum Estate - close scrutiny shows the artist put much detail in the brochure for the advertising *Myrtle Beitz, August 2005*



Wynnum – about 1925 Photo No 56

**Transport - Shops - Buildings** –Tingal Road - Block of shops corner Tingal Road and Florence Street near Wynnum Central Railway Station - corner shop, newsagent George Heymer – *The Courier* and *The Brisbane Mail* advertised – later these two papers amalgamated to become *The Courier Mail* - next shop, Dick Hooper’s dental surgery with the shop closest to the railway line being occupied by George Heymer’s brother as a real estate establishment - George Heymer’s hansom cabs await customers from the train.

*Myrtle Beitz, August 2005*





Wynnum – 1929 Photo No 59

**Military - Clubs** –Tingal Road – Unveiling of first Kitchener Memorial - In 1916 Wynnum Town Council erected a memorial post in an open unfenced paddock to mark the spot where Lord Kitchener stood to take the salute from 3,000 troops on 3 January 1910 as part of his visit to Fort Lytton - Memorial cairn and inscription on marble was placed in 1929 - expansion of club house in 1963 saw the dismantling of this cairn when the plaque was mislaid – when eventually found, the marble slab was relocated about 100 metres from the original location by the Wynnum Manly Historical Society in 1992

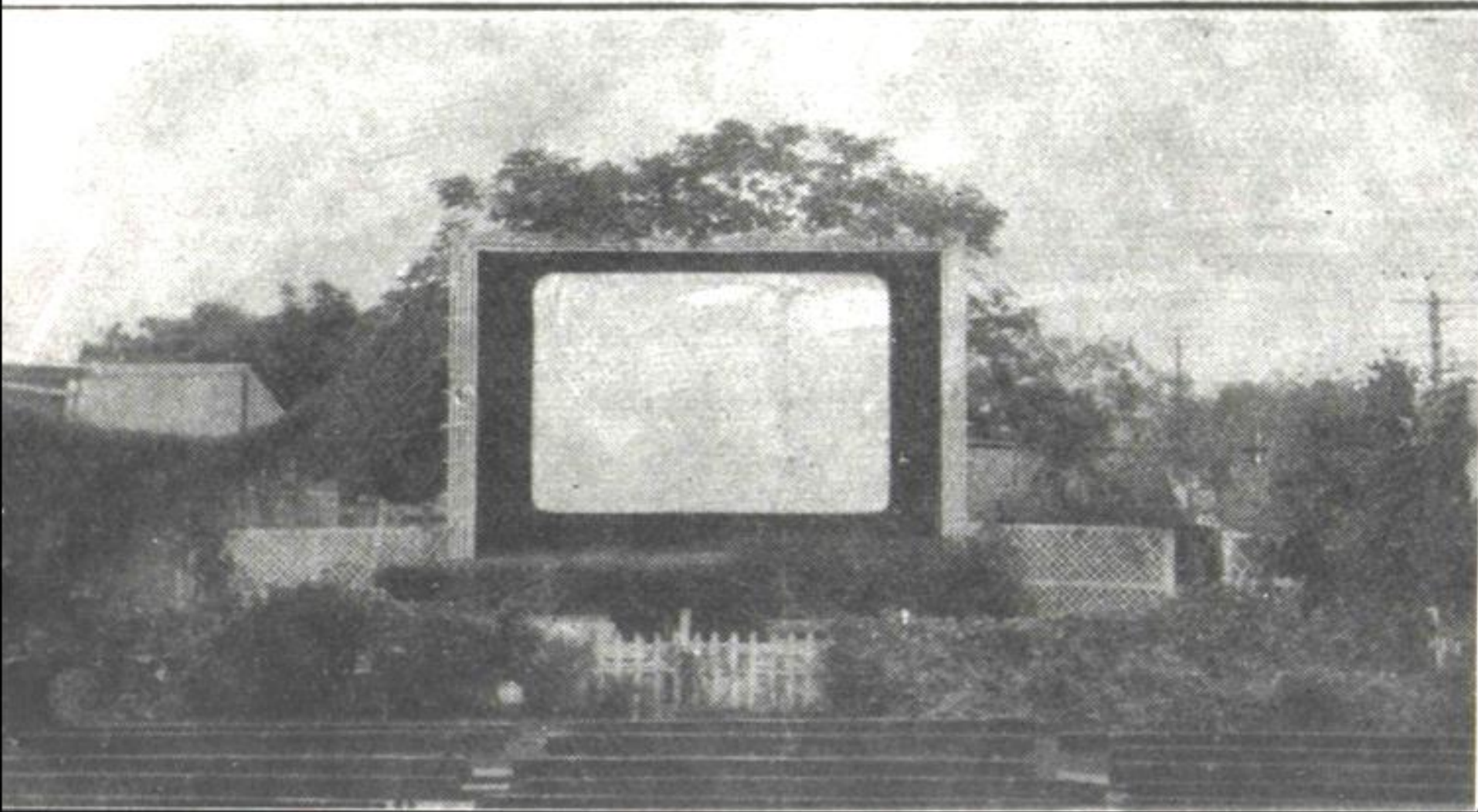
*Myrtle Beitz, August 2005*



Wynnun – 1915 Photo No 60 **Beachfront - Theatres - Buildings – Entertainment** –corner Esplanade and Florence Street Wynnun (Central) South – High walls of galvanized iron surrounded this Crown Theatre without a roof - in time, a framework was erected to allow tarpaulins to be pulled across in bad weather - entrance fee 6d. in the 1920s - outside gas light and hitching rail are evident of the time – with many improvements, this theatre became the Imperial under the ownership of Mr Geraghty in 1930.

*Myrtle Beitz, August 2005*

# Seeing and Hearing Underneath the Stars



Wynnum – date unknown Photo No 61 **Theatres - Entertainment** –Florence Street - between Bay Terrace and Tingal Road – southern side of Florence Street - this must have been the early days of the Star Theatre – Sam Greene bought the theatre building from Mr Moulard in 1924 - Bert came to the district in 1907 - he managed Cook Pictures in the Valley and first showed pictures in the old Town Hall and Paton's Hall at Manly. *Myrtle Beitz, August 2005*



**Star Theatre**

Wynnum Photo No 62

**Theatres - Entertainment** –Florence Street - (between Bay Tce and Tingal Road, southern side of Florence Street)

date of photo unknown

The Star Theatre was built in 1915, the first manager was Bert Mouland - Sam Greene owned and operated The Star in 1924 – there was standing room only most Saturday night in the 30'40'and 50' - Sam handed out teddy bears to the children and provided slings cots between the seats for babes in arms to be placed for the comfort of patrons - this theatre was available for other activities like fancy dress balls boxing and wrestling tournaments and community singing nights.

*Myrtle Beitz, August 2005*

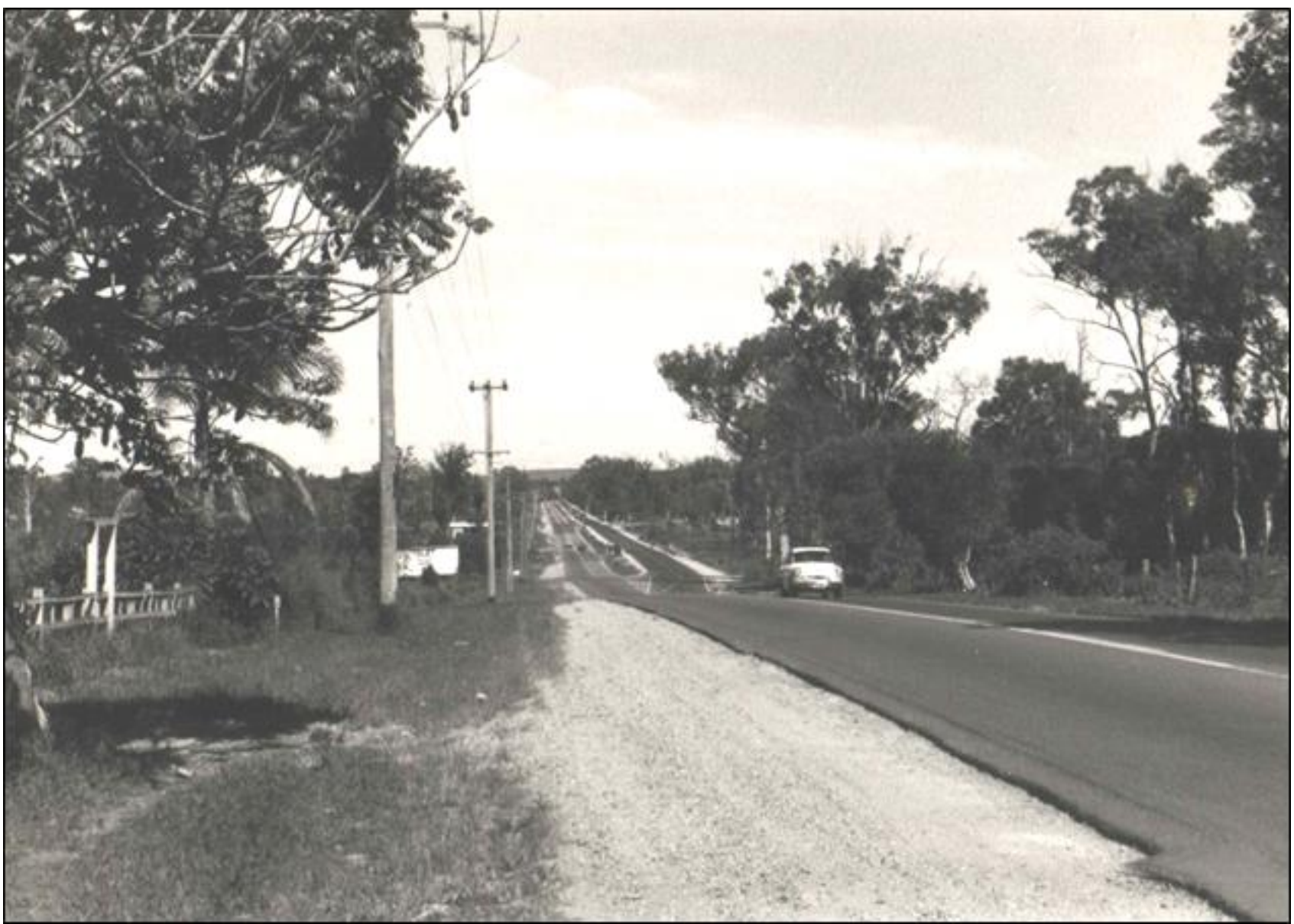


Wynnum – 1920s

Photo No 63

**Transport** – photo of the *Mad Mile* stretching from Wynnum West Plaza to Tingalpa - passengers were often called upon to give assistance when the Pioneer Bus would get bogged during heavy rain. At times it was impassible.

*Myrtle Beitz, August 2005*



Wynnum – 1978 Photo No 64

**Transport** - Wynnum Road, Wynnum West – the notorious *Mad Mile* as it stretched from Wynnum West to Tingalpa  
Photo No 60 shows same spot 50 years before

*Myrtle Beitz, August 2005*



Wynnum – 1930's Photo No 65

**Events - Beachfront** –Esplanade – Wynnum Central – sand has been brought and placed between retaining walls of timber for this sandgarden competition conducted by the Courier Mail - all children and adults are wearing hats.

*Myrtle Beitz, August 2005*



Wynnum – 1926 Photo No 66 **Shops - Buildings** - Glenora Street – store on the southern corner of Tingal Road and King (Glenora) Street belonged to the Mackrell family - Mrs Mena O’Neill (daughter) came to the district in 1924 - she obtained a truck driving license in 1929 enabling her to go to the markets to stock the shop (only going in the afternoon so as not to frighten the horses pulling wagons and carts at the markets) *Myrtle Beitz, August 2005*



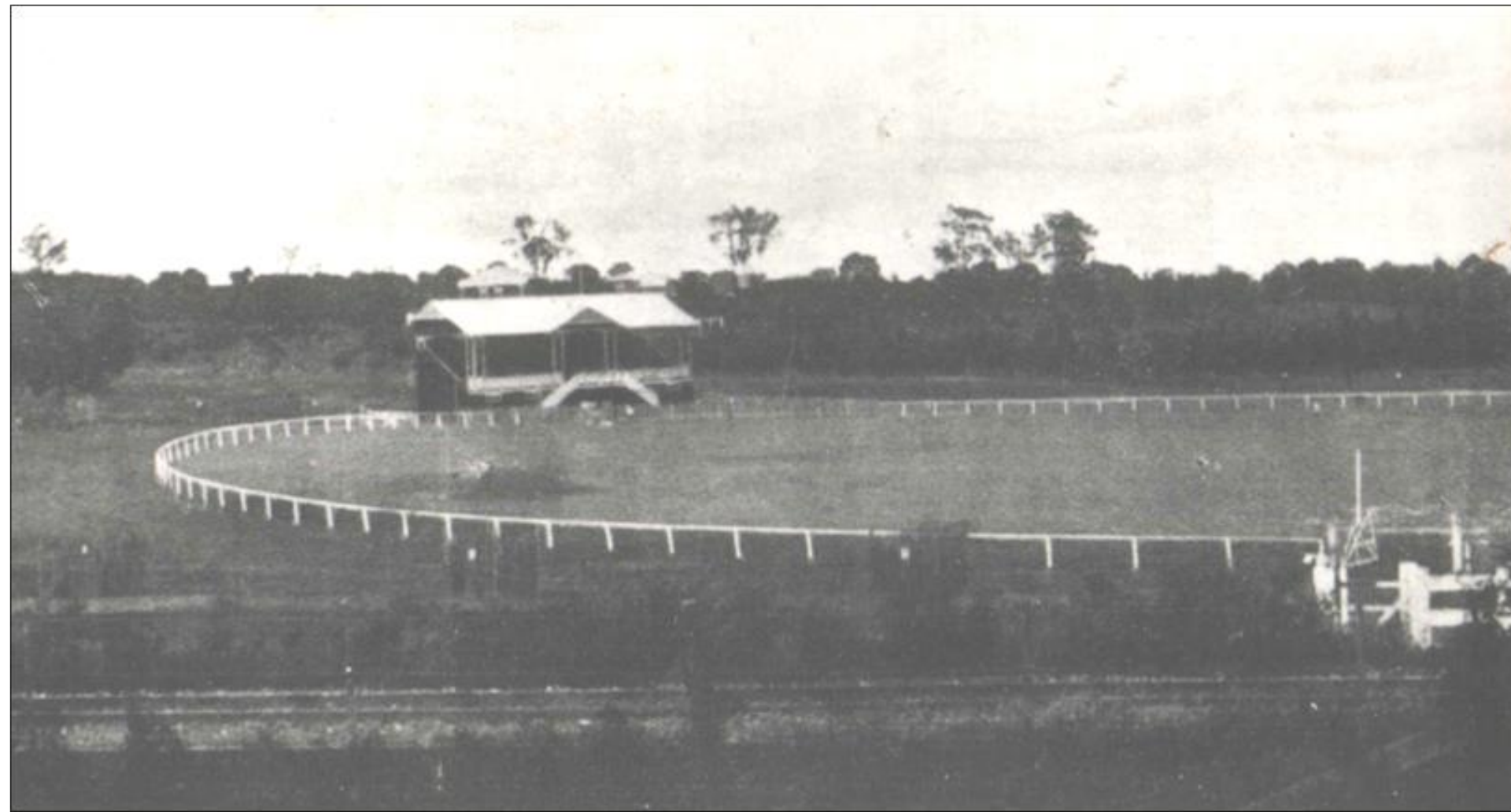


Wynnum – 1918 Photo No 67

**Schools** - Tingal Hill – Moreton Bay College girls paused here for the photographer when out on their weekly walk – the girls would walk to attend Sunday Church services – the girls spent time at the Snelling home at Wynnum North

*Myrtle Beitz, August 2005*





Wynnum – 1930s Photo No 69 **Buildings - Parks -** Russell Park (Memorial Park) where many district shows were held from 1919 to 1936 – Eric Trewearne designed and Mr E Rice built the grandstand - at the 1922 Show Sir Matthew Nathan accompanied by the Governor of N.S.W. Sir Walter Davidson handed over war trophies consisting of two enemy field guns and one machine gun captured by the 49<sup>th</sup> Battalion at Dernancourt on 5 April 1918 to be placed in front of the grandstand - The Wynnum Manly Horticultural Show followed the Brisbane Exhibition in August – competitions for cooking, sewing, vegetable growing, poultry, animal displays, school work, flower growing were eagerly contested by young and old – Wynnum High School's first tuckshop was under this Grandstand – some time in the 1940s vandals and fire brought about the building's destruction, sadly never to be replaced – the name Memorial Park came about after World War 1 (1914-1918) when an avenue of trees (with a plaque beside) were planted together with memorial gates put in place in memory of our district's fallen soldiers – after falling into disrepair and disappearance of plaques the Wynnum Manly Historical Society undertook to see the restoration and Enhancement of Memorial Avenue and the unveiling of plaques by President of the R.S.L., Bill Rieson took place on 24 April 1998. After 1998 some of the plaques were located and are stored at the Manly R.S.L. Hall – the white posts in the left foreground denote a pedestrians crossing over the railway line at Haylock Street.

*Myrtle Beitz, August 2005*



# WYNNUM HOUSE.

Wynnum – date unknown Photo No 70

**Boarding Houses - Buildings** –Florence Street - this boarding house was behind the Imperial Theatre, it catered for many holiday makers seeking the pleasures of the beach and bay. The removal to Upper Esplanade Darling Point near Clayton Park in 1985 enabled the building of units. only It was later removed again, this time from the district.

*Myrtle Beitz, August 2005*



Wynnum – 1930s Photo No 71 **Beachfront - Industry** - Esplanade – in the depression years two young enterprising men delivered “Say-So” pies which were baked in the large house near the Wading Pool.



Wynnum – date unknown Photo No 72

**Institutions - Buildings** –between Walnut and Havelock (Penfold) Parades the Masonic Hall stands facing Tingal Road– the Lodge was formed on 16 January 1894 with 24 foundation members – before the construction of this hall (date unknown) the early meetings were conducted in the Wynnum Shire Hall (built 8 August 1890) – First Wor. Master was Rev. H.T, Molesworth (who presided over St Peter’s Church of England services until 1906)

*Myrtle Beitz, August 2005*



Wynnum – 1930s Photo No 73 **Transport – Air** - Lytton Air Strip - The *Southern Cloud* was one of Charles Kingsford Smith and Associates planes. Here she is being prepared for a flight to Sydney. This aircraft later disappeared over the Snowy Mountains and its wreck was not found until thirty years later in the 1960s. The wreckage was collected and are displayed in a glass case on the outskirts of Cooma, N.S.W. The early days of the A.N.A. Company saw much use made of the airstrip at Lytton. Sir Charles Kingsford Smith and his associates at one time were flying such aircraft as *The Southern Cross*, *The Southern Star* and the *Southern Cloud*.

Myrtle Beitz, August 2005







Wynnnum – 1915 Photo No 75 **Transport – Rail** - steam train coming in to Wynnnum South (Central) Railway Station from Brisbane on route to Cleveland - single line completed in November, 1889 – duplicated line to Manly came about 1913 - the tiled roof (tiles not yet being produced in Australia) on the shelter shed came as ballast in a ship, from France – In 1993 when the rebuilding of the ticket office took place some of these historic tiles were encased in a glass case and placed in the ticket office for prosperity.



Wynnum – 1921

Photo No 76

**Local Authority - Buildings** –Tingal Road – Shire Hall where matters relating to local authority business were conducted before the district became part of Brisbane City Council - celebrations in the form of a Grand Concert took place for the opening of this Hall on 8 August 1890. By 1977 the Old Town Hall outlived its usefulness and was demolished in 1977 to make way for the *Waterloo Bay 50's and Over Centre*. The utility in this photo is believed to belong to photographer.

*Myrtle Beitz, August 2005*



Wynnum – 1920s Photo No 77 **Events - Parades – Parks** –Russell Park (Memorial Park) In this photo the oval is hosting the end of a *Spring Parade* or a *Show Day*. The first show at the Park was in 1919 and they were disbanded in 1936 - a hansom cab can be seen on the Memorial Driveway. Tree guards protect the not so long planted camphor laurel trees.

*Myrtle Beitz, August 2005*



Wynnum – 1970s Photo No 78 **Shops - Buildings** - Florence Street – These shops are built on the site of Star Theatre and are on the southern side of Florence Street close to Tingal Road. The Star was built in 1915 destroyed by fire in 1959. When the New World Supermarket, Coles, commenced expansion in Queensland, Wynnum was chosen as the first suburban store.

*Myrtle Beitz, August 2005*



Wynnum – 1978 Photo No 79

**Industry** - Tingal Road – This photo shows G. & B. Motors on railway side and north of roundabout near R.S.S.A.I.A. with Wynnum Creek in foreground. (original site of Trelfall’s Slaughter yards referred to in an earlier photo no 47).

*Myrtle Beitz, August 2005*



Wynnum – 1978 Photo No 80

**Local Authority - Buildings** –Tingal Road – situated north on beach side of round-a-bout at corner of Berrima and Tingal Road. In 1977 work commenced on the *Waterloo Bay 50s and Over Leisure Centre* after the removed of the old Shire Hall

*Myrtle Beitz, August 2005*



Wynnum – 1930s Photo No 81

**Show – Transport** - this fine horse and sulky belonged to Ethel May Young who is proudly displaying her first place ribbons attained in the Belt Sulky Outfit at the Agricultural and Horticultural Society Show - Cleveland Museum displays one of these beautifully restored sulkies.

*Myrtle Beitz, August 2005*



Wynnum - 1925

Photo No 82

**Sport** - Wynnum Golf Course  
– In 1925 Sir Matthew Natham, then State Governor opened the newly built Club House for the Wynnum Golf Club. The course was officially opened the previous year by J.W. Brook the President of the Queensland Golf Association and also a foundation member of Wynnum Club.

*Myrtle Beitz, August 2005*





Wynnum – 1947 Photo No 83

**Sport** – Cricket - Wynnum Manly cricket team of 1947 who were involved in the B Grade turf competition – names unknown.

*Myrtle Beitz, August 2005*



Wynnum – 1907  
Photo No 84  
**Sport** – Athletics - Among the great professional runners produced in Australia was one, Arthur Postle, born at Pittsworth who came to live in Haylock Street Manly in his latter years. He was known for his willingness to offer help and advice to the younger generation of runners - during his career he was known as “The Crimson Streak” because of his liking to run in red shorts and top. Photo taken with his trainer Jack Todd in 1907, on the day he won the World’s Professional Championship.

*Myrtle Beitz 2005*



Wynnum – 1920 Photo No 85 **Churches** - Ladies from the Presbyterian Church attending a picnic – standing Elsie Weston, Dorothy Mc Allister, Miss Phillips, Dossie Gegges, Mr. A. Phillip, Evelyn Bromage, Gladys King, Lily Collins

Sitting – Violet Highett, Janet Bromage, Nancy Highett, Miss Gittens, Dorothy O’Neill. Location unknown *Myrtle Beitz, August 2005*



Wynnum – 1904 Photo No 86 **Schools** - Wynnum Central State School - Teacher, Miss Gertie Bland – Photo courtesy Dossie Banks of Pine Street who started her school days in 1900 and was in Grade 111 when this photo was taken.

*Myrtle Beitz, August 2005*



Wynnum – 1905 Photo No 87 **Sport** - Cricket - Wynnum Cricket team of 1905 - One wonders just where, in 1905 a suitable oval was available, perhaps it was Kitchener Park or even at *Black's Camp* (afterwards known as Beach End and now Elanora Park)?  
*Myrtle Beitz, August 2005*



Wynnum – 1901 Photo No 88

**Schools** - Wynnum Central State School - the whole school of 60 children dressed in their best for the photographer in 1901. Enrollment reached about 900 in the 1930s.

*Myrtle Beitz, August 2005*



Wynnum – 1907 Photo No 89

**Schools** - Close to 200 students attended Wynnum Central State school by this year of 1907. A marked increase since 1901. Teachers in attendance – Miss Merbeha, Miss Caldwell, Miss Vasey, Mrs. Blunt, Mr. Scott and Mr. Clark (Head Teacher).

*Myrtle Beitz, August 2005*



Wynnum – after 1945 Photo No 90

**Sport** – Football - A post World War II team of Rugby League players, successful in the Geraghty Cup competition held between the Districts of Wynnum-Manly, Dunwich, Beaudesert, Beenleigh and the South Coast.

*Myrtle Beitz, August 2005*





Wynnum – 1982

Photo No 91

**Sport – Football - Characters - Wynnum Manly Rugby League – Gene Miles**, outstanding centre player selected for the 1982 Kangaroo team to tour England. He was one of the first players to be offered a playing position in the Brisbane Bronco team which entered the Sydney Competition in 1988.

*Myrtle Beitz, August 2005*



Wynnum – 1982 Photo No 92 **Sport** – Football – **Characters** - Wynnum Manly Rugby League – Garry Seaton and Captain Rod Morris with the Winfield Cup – Premiership trophy for 1982 – Wynnum-Manly’s first success in the Brisbane Competition.

*Myrtle Beitz, August 2005*