



Wynnum – 1937 Photo No 379

**Schools** - Wynnum West State School, a class photograph in the late 1937

After several years of lobbying, Wynnum West State School was opened on the 15<sup>th</sup> May, 1922 with an initial enrolment of 57 students – Henry Vowles was the first teacher, ably assisted by Miss Dorothy Skuthorp – it was opened by the Honourable J. Huxham, The Minister for Public Instruction and the opening was followed by a concert, dance and Euchre party

A new wing was opened in 1928, but with attendance remaining at 130-140 pupils a remodelling was undertaken in 1937 providing a staff room and a new wing was opened in 1928 and in 1937 a remodelling created a staff room and an additional classroom for the 150 odd pupils.

For more information see *Wynnum West State School : 75<sup>th</sup> Jubilee 1922-27* at 25.1 Wyn/W

Computer imaged copy of original photograph owned by Percy Duke

*Myrtle Beitz, August 2004*



Wynnum Photo No 380 **Schools** - Wynnum West State School, a class photograph

After several years of lobbying, Wynnum West State School was opened on the 15<sup>th</sup> May, 1922 with an initial enrolment of 57 students – Henry Vowles was the first teacher, ably assisted by Miss Dorothy Skuthorp – it was opened by the Honourable J. Huxham, The Minister for Public Instruction and the opening was followed by a concert, dance and Euchre party

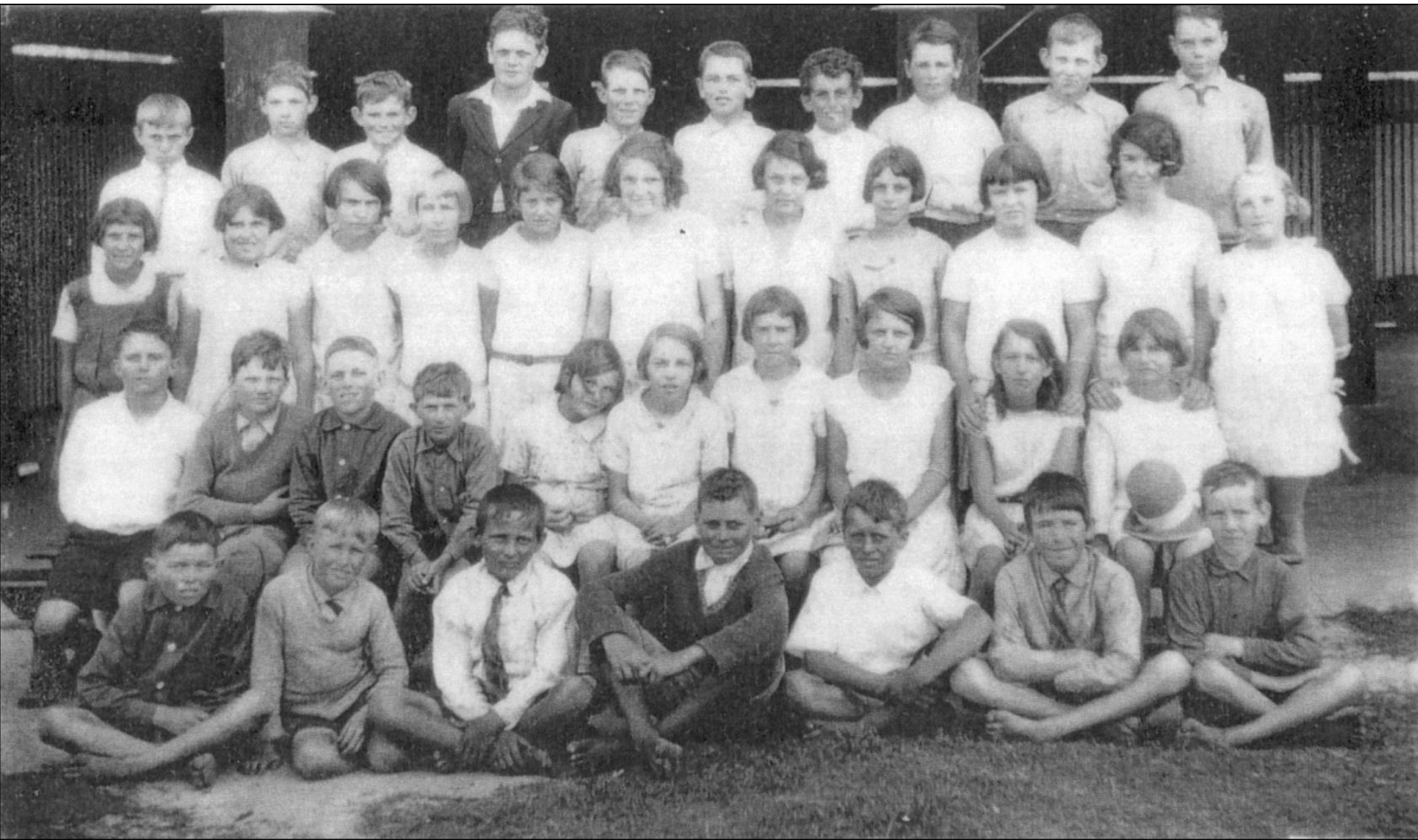
A new wing was opened in 1928, but with attendance remaining at 130-140 pupils a remodelling was undertaken in 1937 providing a staff room and a new wing was opened in 1928 and in 1937 a remodelling created a staff room and an additional classroom for the 150 odd pupils.

For more information see *Wynnum West State School : 75<sup>th</sup> Jubilee 1922-27* at 25.1 Wyn/W

Computer imaged copy of original photograph owned by Percy Duke Myrtle Beitz, August 2004



Wynnum Photo No 359 **Schools** - Wynnum West State School, a class photograph After several years of lobbying, Wynnum West State School was opened on the 15<sup>th</sup> May, 1922 with an initial enrolment of 57 students – Henry Vowles was the first teacher, ably assisted by Miss Dorothy Skuthorp– it was opened by the Honourable J. Huxham, The Minister for Public Instruction and the opening was followed by a concert, dance and Euchre party  
A new wing was opened in 1928, but with attendance remaining at 130-140 pupils a remodelling was undertaken in 1937 providing a staff room and a new wing was opened in 1928 and in 1937 a remodelling created a staff room and an additional classroom for the 150 odd pupils.  
For more information see *Wynnum West State School : 75<sup>th</sup> Jubilee 1922-27* at 25.1 Wyn/W  
Computer imaged copy of original photograph owned by Percy Duke Myrtle Beitz, August 2004



Wynnum Photo No 360 **Schools** - Wynnum West State School, a class photograph

After several years of lobbying, Wynnum West State School was opened on the 15<sup>th</sup> May, 1922 with an initial enrolment of 57 students – Henry Vowles was the first teacher, ably assisted by Miss Dorothy Skuthorp – it was opened by the Honourable J. Huxham, The Minister for Public Instruction and the opening was followed by a concert, dance and Euchre party

A new wing was opened in 1928, but with attendance remaining at 130-140 pupils a remodelling was undertaken in 1937 providing a staff room and a new wing was opened in 1928 and in 1937 a remodelling created a staff room and an additional classroom for the 150 odd pupils.

For more information see *Wynnum West State School : 75<sup>th</sup> Jubilee 1922-27* at 25.1 Wyn/W

Computer imaged copy of original photograph owned by Percy Duke

*Myrtle Beitz, August 2004*



Wynnum – late 1940s Photo No 383 **Schools - Wynnum West State School** A young Merv Beitz on left with his class photo - after several years of lobbying, Wynnum West State School was opened on the 15<sup>th</sup> May, 1922 with an initial enrolment of 57 students – Henry Vowles was the first teacher, ably assisted by Miss Dorothy Skuthorp – it was opened by the Honourable J. Huxham, The Minister for Public Instruction and the opening was followed by a concert, dance and Euchre party  
A new wing was opened in 1928, but with attendance remaining at 130-140 pupils a remodelling was undertaken in 1937 providing a staff room and a new wing was opened in 1928 and in 1937 a remodelling created a staff room and an additional classroom for the 150 odd pupils.  
For more information see *Wynnum West State School : 75<sup>th</sup> Jubilee 1922-27* at 25.1 Wyn/W  
Computer imaged copy of original photograph owned by Percy Duke  
*Myrtle Beitz, August 2004*



Wynnum - 1965 Photo No 384 **Schools** - Wynnum West State School

After several years of lobbying, Wynnum West State School was opened on the 15<sup>th</sup> May 1922 with an initial enrolment of 57 students. A new wing was opened in 1928 and in 1937 it was remodeled to create a staff room and an additional classroom for the approximately 150 pupils. Enrolments continued to rise after the war, reaching 515 by 1965 and in the fifties A & N wings were built to cater for the increase.

For more information see *Wynnum West State School : 75<sup>th</sup> Jubilee 1922-27* at 25.1 Wyn/W

Computer imaged copy of original photograph owned by Percy Duke *Myrtle Beitz*, August 2004



Wynnum - 1965 Photo No 384 **Schools** - Wynnum West State School

After several years of lobbying, Wynnum West State School was opened on the 15<sup>th</sup> May 1922 with an initial enrolment of 57 students. A new wing was opened in 1928 and in 1937 it was remodelled to create a staff room and an additional classroom for the approximately 150 pupils. Enrolments continued to rise after the war, reaching 515 by 1965 and in the fifties A & N wings were built to cater for the increase. In the 1960's C wing was completed and extra land was purchased.

For more information see *Wynnum West State School : 75<sup>th</sup> Jubilee 1922-27* at 25.1 Wyn/W

Computer imaged copy of original photograph owned by Percy Duke *Myrtle Beitz, August 2004*



Wynnum – 1920s Photo No 386 **Schools** - Tingalpa State Primary School. Tingalpa State School was opened in 1873, being second only to Hemmant State School, which was opened in 1864. On the 1<sup>st</sup> August 1870 Mr W. R. Wood, a farmer in the Tingalpa district wrote to the Board of Education on the necessity of providing a school in the area. Two acres was purchased by the Board and on 14<sup>th</sup> October there was a successful tender for construction of the school building and a teacher's residence. The School was opened on 1<sup>st</sup> August 1873, consisting of a room 30 feet by 16 feet. There were reportedly 50 students on the roll. An entirely new school was built in 1923, with rising enrolments the school continued to develop with additional wings and facilities. For more information see *Tingalpa State School: The Centenary 1873-1973* at 25.1.TIN. Laser Copy of copy owned by Mrs Gail Williams . Myrtle Beitz, August 2004





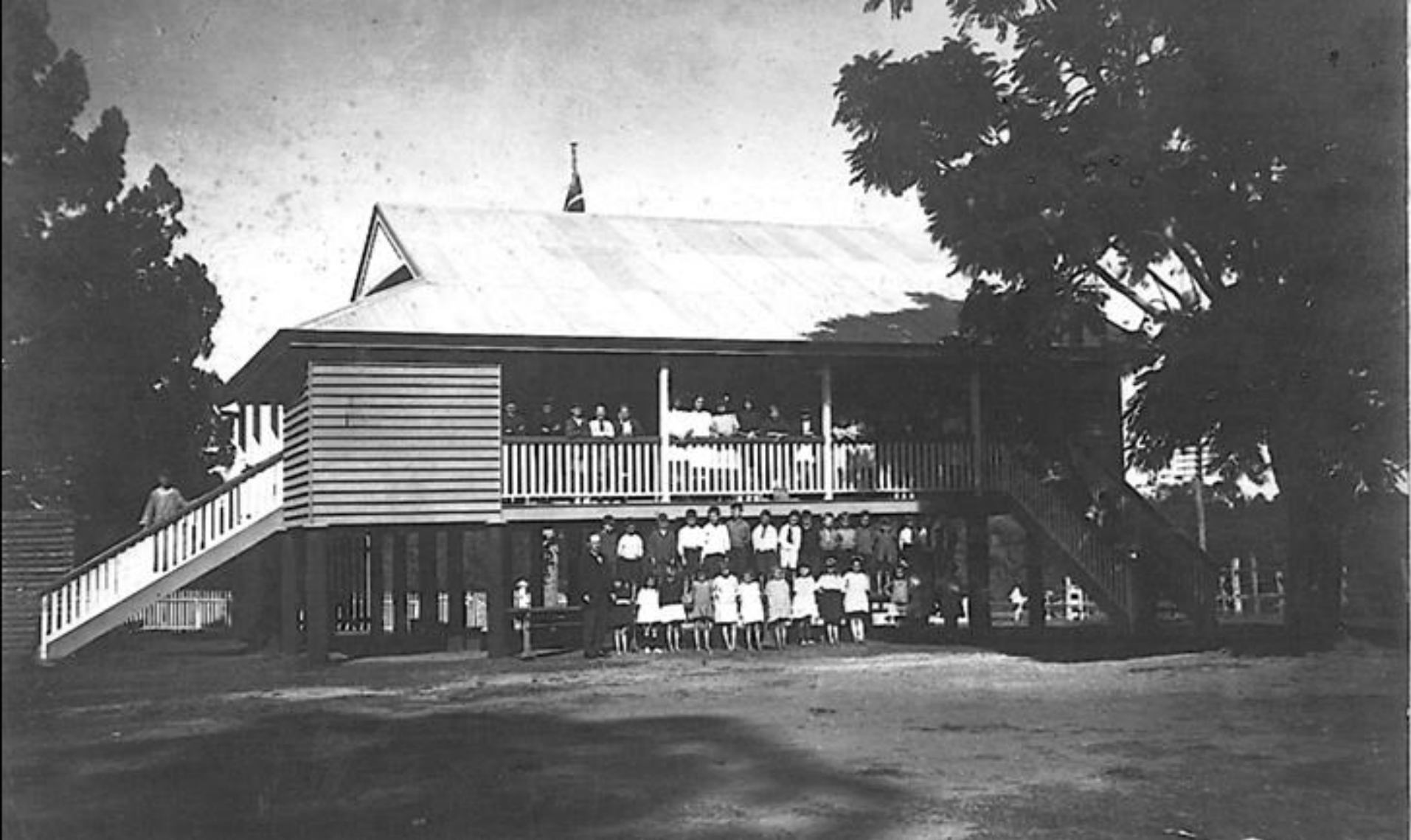
Wynnum – 1932 Photo No 387 **Schools** - Tingalpa State Primary School. Tingalpa State School was opened in 1873, being second only to Hemmant State School, which was opened in 1864. On the 1<sup>st</sup> August 1870 Mr W. R. Wood, a farmer in the Tingalpa district wrote to the Board of Education on the necessity of providing a school in the area. Two acres was purchased by the Board and on 14<sup>th</sup> October there was a successful tender for construction of the school building and a teacher's residence. The School was opened on 1<sup>st</sup> August 1873, consisting of a room 30 feet by 16 feet. There were reportedly 50 students on the roll. An entirely new school was built in 1923, with rising enrolments the school continued to develop with additional wings and facilities.

For more information see Tingalpa State School: The Centenary 1873-1973 at 25.1.TIN. Laser Copy of copy owned by Mrs Gail Williams  
*Myrtle Beitz, August 2004*



Wynnum – 1921-22 Photo No 388 **Schools** - Tingalpa State Primary School, Class photograph 1921-22. Tingalpa State School was opened in 1873, being second only to Hemmant State School, which was opened in 1864. On the 1<sup>st</sup> August 1870 Mr W. R. Wood, a farmer in the Tingalpa district wrote to the Board of Education on the necessity of providing a school in the area. Two acres was purchased by the Board and on 14<sup>th</sup> October there was a successful tender for construction of the school building and a teacher's residence. The School was opened on 1<sup>st</sup> August 1873, consisting of a room 30 feet by 16 feet. There were reportedly 50 students on the roll. An entirely new school was built in 1923, with rising enrolments the school continued to develop with additional wings and facilities. For more information see Tingalpa State School: The Centenary 1873-1973 at 25.1.TIN. Laser Copy of copy owned by Mrs Gail Williams

*Myrtle Beitz, August 2004*



Wynnum – 1920s Photo No 389 **Schools** - Tingalpa State Primary School. Tingalpa State School was opened in 1873, being second only to Hemmant State School, which was opened in 1864. On the 1<sup>st</sup> August 1870 Mr W. R. Wood, a farmer in the Tingalpa district wrote to the Board of Education on the necessity of providing a school in the area. Two acres was purchased by the Board and on 14<sup>th</sup> October there was a successful tender for construction of the school building and a teacher's residence. The School was opened on 1<sup>st</sup> August 1873, consisting of a room 30 feet by 16 feet. There were reportedly 50 students on the roll. An entirely new school was built in 1923, with rising enrolments the school continued to develop with additional wings and facilities.

For more information see Tingalpa State School: The Centenary 1873-1973 at 25.1.TIN. Laser Copy of copy owned by Mrs Gail Williams  
*Myrtle Beitz, August 2004*



Wynnum – 1940s Photo No 390 **View** - Aerial view of Wynnum after 1940 looking north from over the bay -this view shows Jetty No 1 Wynnum Creek and mangrove area - breakwall at mouth of Creek completed in 1940.  
Laser copy of an original owned by Percy Duke  
*Myrtle Beitz, August 2004*



Wynnum Photo No 370 **View** - Areal view of Wynnum – this view shows railway line, Wynnum Road, Nazareth House, and a large area of undeveloped land and trees which is the future site of the Wynnum North High School.

Laser copy of an original owned by Percy Duke

*Myrtle Beitz, August 2004*



AERIAL VIEW WYNNUM EX MIKES FAHCOAL 1936

Wynnum – 1936 Photo No 392 **Views** - Aerial view of Wynnum - looking east – this view shows the Golf Course – note the jetty in the upper area of the photograph – note the large amount of clear land at this time.

Laser copy of an original owned by Percy Duke.

*Myrtle Beitz, August 2004*



Wynnum – 1963 Photo No 393 **Lytton – Military** - Fort Lytton is the birthplace of Queensland's Military history – this gun built in 1880/1 to protect Brisbane from enemy attack – the Fort is the principal remaining landmark of a reserve which for forty years was the focus of Queensland's defence activity - initially the fort had four heavy gun positions – by the turn of the century, it had six gun pits and two machine gun posts – its main ordnance was the 6-inch 5-ton breach-loading Armstrongs called disappearing guns which could be raised rapidly to fire over the Fort's ramparts and lowered below the parapet just 20 seconds later.

*Myrtle Beitz, August 2004*



Wynnum – 1967 Photo No 394 **Lytton – Military** - Loading Gallery – Fort Lytton is the birthplace of Queensland's Military history – built in 1880/1 to protect Brisbane from enemy attack, the fort is the principal remaining landmark of a reserve which for forty years was the focus of Queensland's defence activity – initially, the Fort had four heavy gun positions, by the turn of the century, it had six gun pits and two machine gun posts – its main ordnance was the 6-inch 5-ton breach-loading Armstrongs called disappearing guns which could be raised rapidly to fire over the Fort's ramparts and lowered below the parapet just 20 seconds later . *Myrtle Beitz, August 2004*





Working the searchlight in the fort. Photos. by Royal Studio

Wynnum – 1910 Photo No 395

**Lytton – Military** - Working the searchlight at Fort Lytton – 1910

Fort Lytton is the birthplace of Queensland's military history – built in 1880/1 to protect Brisbane from enemy attack – the Fort is the principal remaining landmark of a reserve which for forty years was the focus of Queensland's defence activity.

The permanent searchlight, installed in 1903 – was later hidden behind its own grassy embankment.

Engineers operated the searchlight which produced a concentrated moveable beam which could search for, find and follow a target in Moreton Bay – remember the Port of Brisbane structures and Ampol Refinery were not built until after World War II.

*Myrtle Beitz, August 2004*



Wynnum

Photo No 396

Clifton Gun at Wynnum Central north of  
entrance to Jetty No 2 – from 1912-1972

*Myrtle Beitz 2018*



Wynnum – 1963 Photo No 397 **Lytton – Military** - Fort Lytton is the birthplace of Queensland's Military history – this gun built in 1880/1 to protect Brisbane from enemy attack – the Fort is the principal remaining landmark of a reserve which for forty years was the focus of Queensland's defence activity.



Wynnum – 1962 Photo No 377 **Lytton** – James Wassell was head of the Quarantine station at Lytton. A meeting of parents organised by James Wassell superintendent of boys reformatory, resulted in the eventual opening of the Lytton State School in 1882 with an enrolment of 39 children. The first head teacher appointed was Lambert Spencer. The age of the children ranged from 5 to 19 years. Children travelled mainly by foot over rough tracks.

Fort Lytton is the birthplace of Queensland's military history – built in 1880/1 to protect Brisbane from enemy attack – the Fort is the principal remaining landmark of a reserve which for forty years was the focus of Queensland's defense activity. *Myrtle Beitz, August 2004*



Wynnum – 1963 Photo No 399 **Lytton – Military** - Fort Lytton is the birthplace of Queensland's military history – built in 1880/1 to protect Brisbane from enemy attack – the Fort is the principal remaining landmark of a reserve which for forty years was the focus of Queensland's defence activity.  
*Myrtle Beitz, August 2004*



Wynnum - 1963 Photo No 400 **Lytton – Military** - Fort Lytton is the birthplace of Queensland's military history – built in 1880/1 to protect Brisbane from enemy attack – the Fort is the principal remaining landmark of a reserve which for forty years was the focus of Queensland's defence activity.  
*Myrtle Beitz, August 2004*



Wynnum – 1963 Photo No 401 **Lytton – Military** - Fort Lytton is the birthplace of Queensland's military history – built in 1880/1 to protect Brisbane from enemy attack – the Fort is the principal remaining landmark of a reserve which for forty years was the focus of Queensland's defence activity.

*Myrtle Beitz, August 2004*



Wynnum – 1963 Photo No 402 **Lytton – Military** - Fort Lytton is the birthplace of Queensland's military history – built in 1880/1 to protect Brisbane from enemy attack – the Fort is the principal remaining landmark of a reserve which for forty years was the focus of Queensland's defence activity.

*Myrtle Beitz, August 2004*

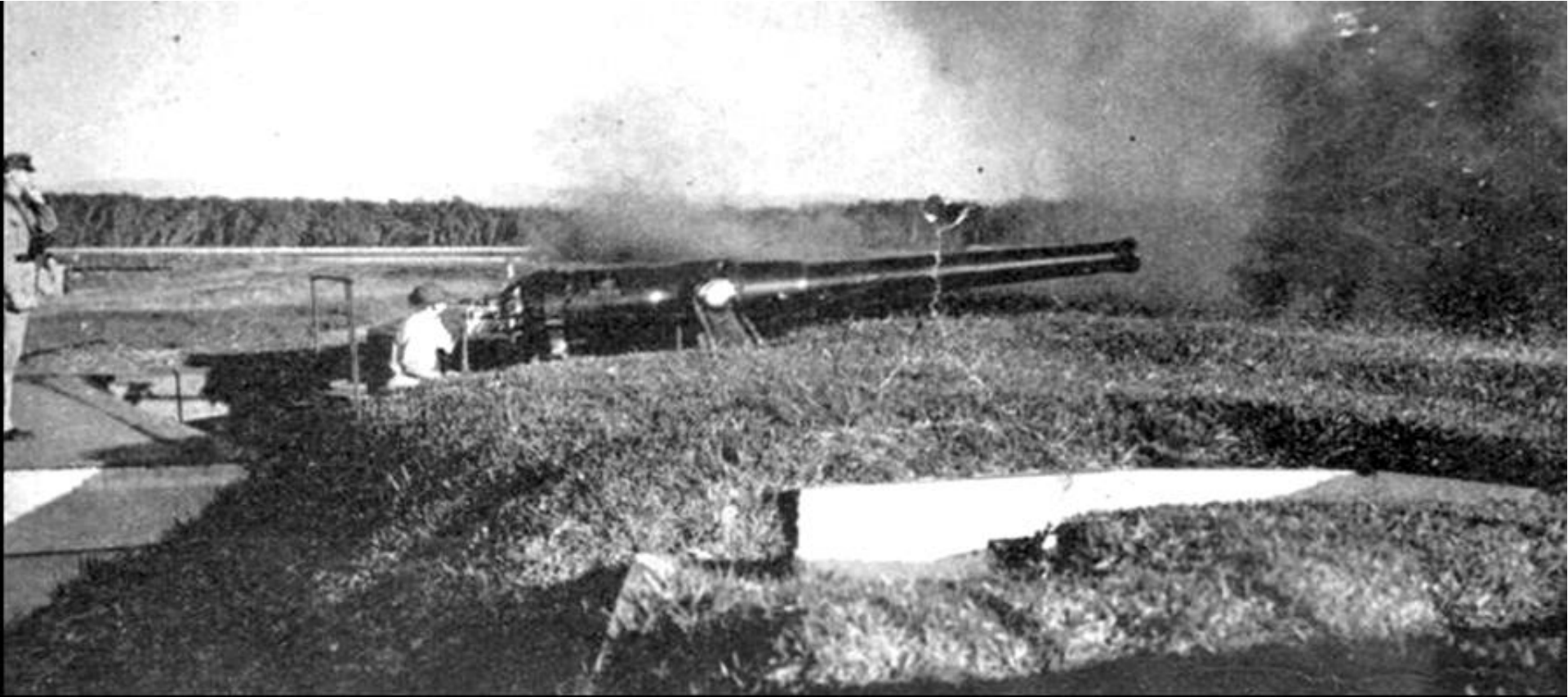




Wynnum Photo No 382 **Lytton – Military** - Guns with Personnel - Fort Lytton is the birthplace of Queensland's military history – built in 1880/1 to protect Brisbane from enemy attack – the Fort is the principal remaining landmark of a reserve which for forty years was the focus of Queensland's defence activity.

Initially the Fort had four heavy gun positions – by the turn of the century, it had six gun pits and two machine gun posts – its main ordnance was the 6-inch 5-ton breech-loading Armstrongs called disappearing guns which could be raised rapidly to fire over the Fort's ramparts and lowered below the parapet just 20 seconds later.

*Myrtle Beitz, August 2004*

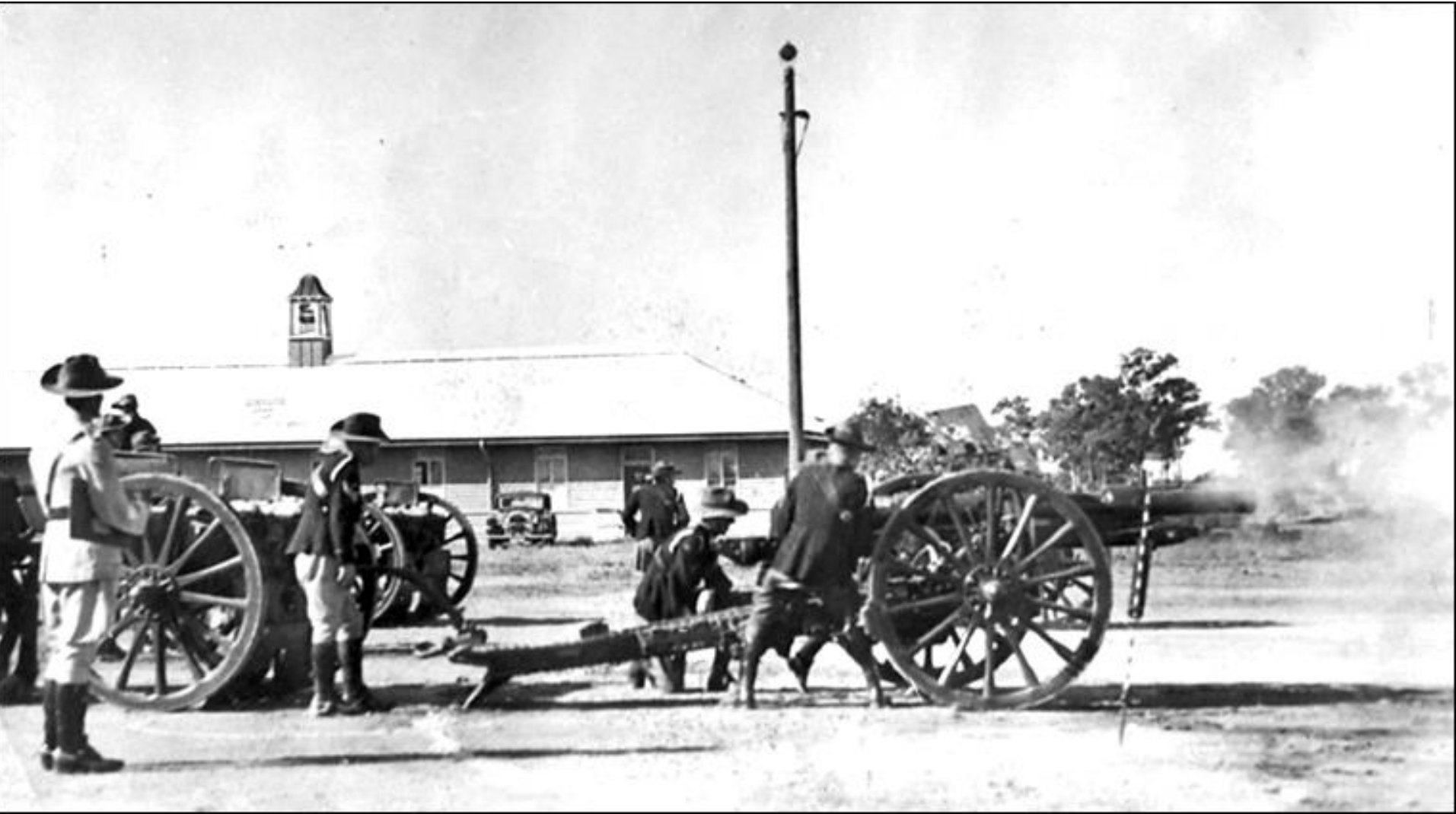


Wynnum – 1936 Photo No 404

**Lytton** - Guns with personnel - Fort Lytton is the birthplace of Queensland's military history – built in 1880/1 to protect Brisbane from enemy attack – the Fort is the principal remaining landmark of a reserve which for forty years was the focus of Queensland's defence activity.

Initially the Fort had four heavy gun positions – by the turn of the century, it had six gun pits and two machine gun posts – its main ordnance was the 6-inch 5-ton breach-loading Armstrong called disappearing guns which could be raised rapidly to fire over the Fort's ramparts and lowered below the parapet just 20 seconds later.

*Myrtle Beitz, August 2004*



Wynnum – 1936 Photo No 405

**Lytton – Military - Guns with personnel -** Fort Lytton is the birthplace of Queensland's military history – built in 1880/1 to protect Brisbane from enemy attack – the Fort is the principal remaining landmark of a reserve which for forty years was the focus of Queensland's defense activity.

Initially the Fort had four heavy gun positions – by the turn of the century, it had six gun pits and two machine gun posts – its main ordnance was the 6-inch 5-ton breach-loading Armstrongs called disappearing guns which could be raised rapidly to fire over the Fort's ramparts and lowered below the parapet just 20 seconds later.

*Myrtle Beitz, August 2004*





Wynnum Photo No 470 **Schools** - Wynnum Central State School was opened by the first Headmaster, Mr F. N. Clarke, on February 24 1896 – as early as 1892 local residents applied for the establishment of a provisional school at Wynnum – on 15<sup>th</sup> November 1894, The Minister for Education approved the purchase of one and a half acres for school purposes – building commenced in 1895.

Grade 2B

Front Row: *Clem Nalder, Donny Henzell, boy with slate?, Ronnie Robbins (married June Benjamin).*

Second Row: *Audrey Wiley, Marjory Quinn, Millie Raby, Kathleen Lamb, Marjory Young, Etta Davison, Vera Moody?*

*Peggy Johnson, Eveline Brown, Valmai Baker. Third Row: Yvonne Raabe, Eunice McLean, Betty Gregory, Zillah O'Neill, Dorothy Jackson, Jean Graham, Phyllis Hicks, Rita Windle, ? Vera Sipher, Agnes Graham*

Back Row: *Neville Nock, Alan Wright, Hydewyn Watkins, ? Dodd, ?, Jacky Ferris (mother was school cleaner), Maxie Ferguson, George James, Johnny Nock, Ray Devlin, Eddie Swain. Computer imaged copy of original photograph owned by Mrs Smith Myrtle Beitz, August 2004*



Wynnum – possibly 1926 Photo No 408 **Schools** - Wynnum Central State School – Maypole dance was organised by Miss Gladys McMinn who is fondly referred to in the collection of memories – some remembered their being two Miss Mc Minns, however, only one actually taught at the school – the second Miss Mc Minn was the teacher’s sister who walked from their home on the Corner Bay Terrace and Pine Street each day to meet her sister after school – both were daughters of the Parliamentarian Mr McMinn M.L.A.

*Front Row: Sadie Foster (fourth from left), Joan Hayley (fifth from left) Thelma Allison- Queen of the Maypole(sixth from left) Kathy Lamb – Junior Queen (seventh from left)*

**Second Row:** *Betty Scholey (second from Left) Rene Barkley (second from left), Peggy Barkley (tenth from left), Thelma Hazel (twelfth from left, standing)*

**Third Row:** *Joyce Simmonds (fifth from left) Nancy Scholey (sixth from left) Fourth Row: not known*

*McMinns lived at Corner Bay & Pine not Charlotte – Kathleen Lamb not Kathy (changes M. Beitz) Myrtle Beitz, August 2004*



Wynnum - 1927 Photo No 409 **Schools** - Fancy dress Ball at the Star Theatre - school unknown - many such activities occurred at the Star Theatre including Community Singing on a Thursday night.  
*Myrtle Beitz, August 2004*



Wynnum – 1924 Photo No 410 **Schools** - Wynnum Central State School – Class photo Wynnum Central State School was opened by the first Headmaster, Mr F. N. Clarke on February 24 1896 – the enrolment figure for the opening year has been recorded in much of the school’s memorabilia as being only 85 – the original register, however shows that 89 students were enrolled in February but 190 had enrolled by the end of the first year.

In 1924 the Department acquired land complete with a cottage from a Mr J. Falkiner of N.S.W. – while the Department was keen to recoup some of its outlay through the sale for removal of the cottage, the pressure for teaching space was great with an average daily attendance of 640 students – by 1933 the cottage housed the preparatory classes taught by Miss Mc Minn.

First row: *John Deen – Allan Fitzgibbons – Bill Lamb (fourth from left)*

Second Row: *Alex Lamb – Bill Gilbert – Bill Mc Lauchlan – Charlie Rose – Karl Troutwheller*

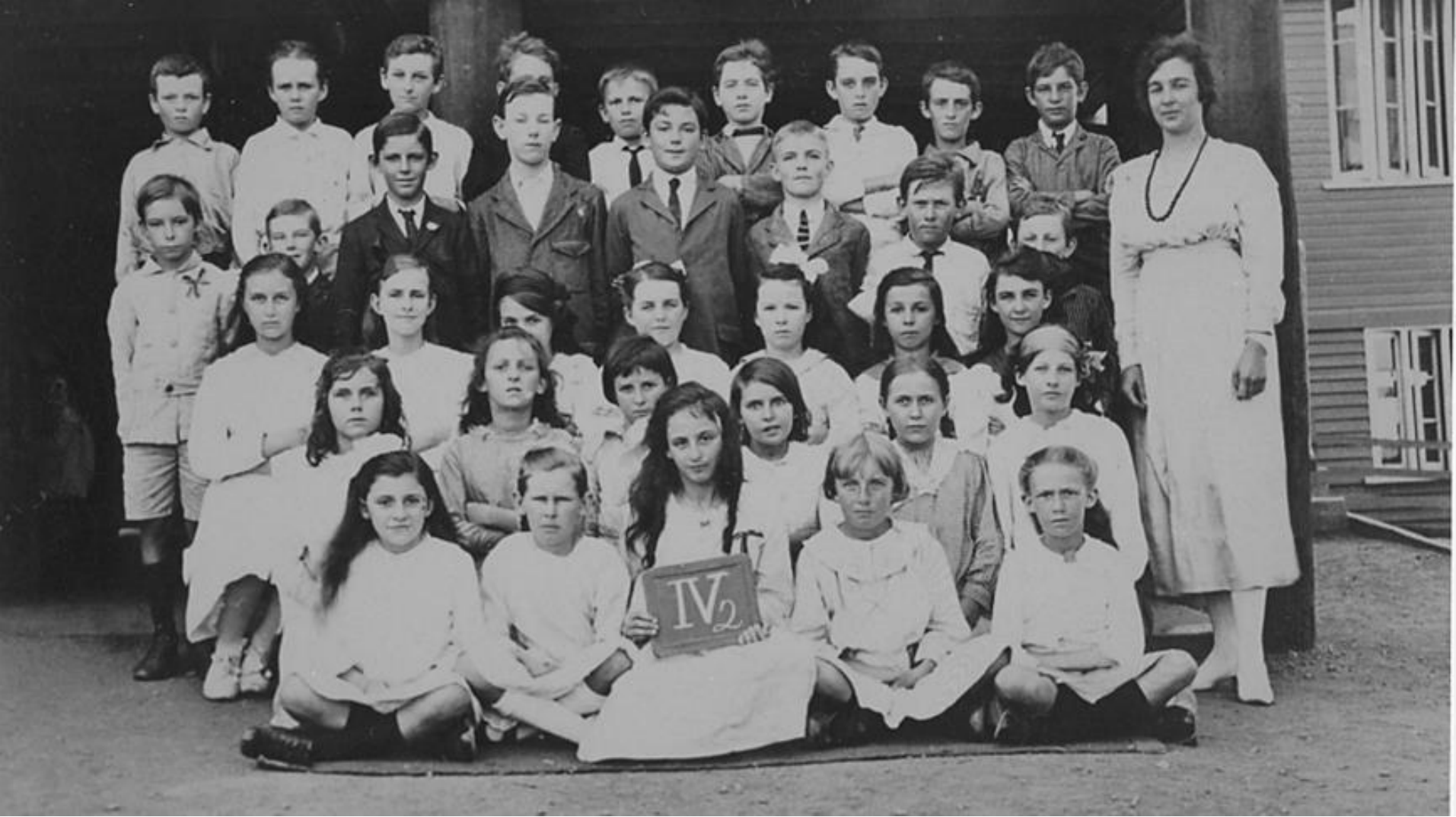
Third Row *Cec Woodford – Cec Uhlman – George Kohler*

Fourth Row: *....., Alfred Crowhurst*

Computer imaged copy of original photograph owned by Mr. W. Lamb

*Myrtle Beitz, August 2004*





Wynnum – 1924 Photo No 411 **Schools** - Wynnum Central State School – Class photo Wynnum Central State School was opened by the first Headmaster, Mr. F. N. Clarke on February 24 1896 – the enrolment figure for the opening year has been recorded in much of the school’s memorabilia as being only 85 – the original register, however shows that 89 students were enrolled in February but 190 had enrolled by the end of the first year.

In 1924 the Department acquired land complete with a cottage from a Mr. J. Falkiner of N.S.W. – while the Department was keen to recoup some of its outlay through the sale for removal of the cottage, the pressure for teaching space was great with an average daily attendance of 640 students – by 1933 the cottage housed the preparatory classes taught by Miss Mc Minn.

First row: *John Deen – Allan Fitzgibbons – Bill Lamb (fourth from left)* Second Row: *Alex Lamb – Bill Gilbert – Bill Mc Lauchlan – Charlie Rose – Karl Troutwheller*

Third Row *Cec Woodford – Cec Uhlman – George Kohler* Fourth Row: ....., *Alfred Crowhurst*

Computer imaged copy of original photograph owned by Mr. W. Lamb *Myrtle Beitz, August 2004*



Wynnum -1920 Photo No 412 **Schools** - Wynnum Central State School – Class 5 Year – Wynnum Central School was opened by the first Headmaster, Mr F. N. Clarke on February 24<sup>th</sup> 1896 – the first student to be enrolled among those on the first day was 15 year old Emma Snelling – it is likely that Emma, typical of resident Wynnum school children, may have had far to travel to school – it is also probable that prior to the opening of the school these children travelled to Lytton, Hemmant, Tingalpa or Cleveland – at the time this photograph was taken, the school was requesting connection with mains water, this action was prompted by the relentless maintenance of the tanks (shown at far right) their stands, screening against mosquitoes and drainage problems – mains water was finally connected in 1924.

*Myrtle Beitz, August 2004*



Wynnum Photo No 413 **Buildings – Churches** - Wynnum North Road Wynnum North - Nazareth House takes its name from the *Poor Sisters of Nazareth* which was founded in 1851 to care for the aged poor and orphaned or abandoned children. Archbishop Duhig saw the need for a home in Brisbane similar to the one established in Ballarat – In 1918 he purchased from Dr Kidston the home and property on Tingal Hill known as Mt Margaret – it consisted of sixty acres and a large villa and office block and sold for five thousand pounds – on the 24<sup>th</sup> March 1921 six Sisters from the Sisters of Nazareth commenced their work  
In 1922 an adjoining property was purchased and the buildings transferred to that site and joined, but new buildings were still required – In 1924 tenders were called for the construction of the brick building which presently forms the eastern wing of Nazareth Home – the foundation stone was laid by Archbishop Duhig on 12/2/1924 and the then Governor, Sir Matthew Nathan, opened the building in August 1925 . The second stage of building commenced in 1938 and comprised the Convent, Chapel and laundry block and facilities for the children – gradually the Government policy of non-institutionalized care for children has enabled the decline of the orphanage MB Aug 2004



Wynnum Photo No 414 **Characters** - This photograph is of the Carter family of Wynnum – Grandma Carter is seated on the far right, holding the little boy - the inscription on the back of the photograph reads: “To dear little Douglas love from Grandma Carter”

Beryl Duke, nee Carter provided the original of this photo, computer imaged copy of original photograph in postcard form

*Myrtle Beitz, August 2004*

# WYNNUM GORDON FOOTBALL CLUB.

(AUSTRALIAN RULES).



Back Row—  
Third Row—  
Second Row—  
Sitting—  
In Front—

	E. McKellar.	F. W. McCaughey	A. Redding.	H. Hogg.	W. East.	P. D. Meares.	H. Goodman.
	H. J. Shepherd.	W. Hambleton.	L. Floyd.	H. G. Crofts (Secy.)	H. J. Smith.	A. Charlton.	H. Green.
	G. Cavanagh.	W. Hight.	J. Gemmell (CAPT)	A. C. Jeffery (Pres.)	A. N. Bolton (Vice-Capt)	P. Martin	D. Munro (Vice-Pres.)
				J. M. Bolton.			

Inset—Hon. W. H. Barnes, M.L.A. (Patron).

*J. S. Wiley*  
BRISBANE

Wynnum - 1910  
Photo No 416 **Sport -**  
Wynnum Gordon  
Football Club  
(Australian Rules)  
The Wynnum Gordon  
Club was founded in  
1904 with the object the  
“Mental and physical  
development of and the  
promotion of Good-  
fellowship amongst  
members” (Item 3 (a)  
from the Constitution  
1910). In 1908 club  
rooms were erected at a  
site in Florence Street  
(south side of the street  
between Akonna and  
Wynnum Esplanade)  
Various sporting  
activities were taken out  
by the club, including  
wrestling, boxing and  
football.  
In 1962, the Wynnum  
Gordon Club, which  
was the last one  
remaining in  
Queensland, disbanded,  
and the site of the  
clubhouse and the  
Club’s assets were  
transferred to the  
General Gordon  
Memorial Kindergarten  
Association of  
Wynnum, with the  
proviso that the name  
must include General  
Gordon. The  
Kindergarten still (2021)  
occupies the site.  
*Myrtle Beitz, Aug 2004*

# WYNNUM GORDON FOOTBALL CLUB.

(AUSTRALIAN RULES).



Back Row—  
 Third Row—  
 Second Row—  
 Sitting—  
 In Front—

E. McKelley	F. W. McCaughey	A. Boddie	H. Hogg	W. East	F. D. Moore	H. Gordon
H. J. Shephard	W. Hamilton	L. Floyd	H. G. Cooke (Capt)	H. J. Smith	A. H. Bolton (Vice-Capt)	A. Charlton
G. Carrrough	W. Hight	J. Guinness (Goal)	A. C. Jeffrey (Opp)	J. M. Bolton	F. Harris	H. Green
					Inst—Hon. W. H. Barnes, M.L.A. (Patron)	D. Moore (Vice-Pres)

J. S. Wiley  
 Wynnum

Wynnum  
 Photo No 417  
**Sport** - Wynnum Gordon Football Club (Australian Rules), 1910  
 The Wynnum Gordon Club was founded in 1904 with the object the "Mental and physical development of and the promotion of Good-fellowship amongst members" (Item 3 (a) from the Constitution 1910).  
 In 1908 club rooms were erected at a site in Florence Street (south side of the street between Akonna and Wynnum Esplanade)  
 Various sporting activities were taken out by the club, including wrestling, boxing and football.  
 In 1962, the Wynnum Gordon Club, which was the last one remaining in Queensland, disbanded, and the site of the clubhouse and the Club's assets were transferred to the General Gordon Memorial Kindergarten Association of Wynnum, with the proviso that the name must include General Gordon. The Kindergarten still (2004) occupies the site.  
 Enlargement of original at 396 Myrtle Beitz, August 2004

WYNNIE GORDON FOOTBALL CLUB 1911.



In 1911—  
 Captain— J. M. Bolton.      C. McLeod      G. Wright      W. Gordon      J. H. Cunningham      H. Morrison      K. ...  
 Forward— J. Kelly      H. ...      J. ...      B. ...      A. ...      F. ...  
 Back Row— A. ...      H. ...      J. ...      P. ...      H. ...

111  
 WYNNIE GORDON



Wynnum – 1937 Photo No 399 **Lytton –Transport** - Jim Davidson and Alex Geddes preparing for take off, 1937. This photograph by Percy Duke shows Jim Davidson and Alex Geddes preparing to leave the air strip at Lytton flats in a mice falcon for Toowoomba in 1937. This is the plane from which Percy Duke took several aerial photographs of the Wynnum area. Computer imaged copy of original owned by Percy Duke  
*Myrtle Beitz, August 2004*





Wynnum – 1930s Photo No 420 **Lytton – Transport** - One of Smithy's planes leaving the airstrip at Fort Lytton in the 1930s – Beryl Duke took this photograph at the time  
Computer imaged copy of original owned by Percy Duke  
*Myrtle Beitz, August 2004*



Wynnum – 1920s Photo No 422 **Jetties - Beachfront** – the Nuns' Bathing Box at the foot of Pine Street. The Sisters of Mercy came to Wynnum from All Hallows to reside in the magnificent Victorian-style convent built in 1915. So these bathing boxes would have been built after 1915 and the photo would be c1920.

*Myrtle Beitz, August 2005*



Wynnum Photo No 423  
Coloured photo of Nuns' bathing boxes supplied by Ken Phillips via facebook August 2021



Wynnum Photo No 428 By February 1911 land had been purchased, which cost £104 and was paid for from a £100 donation that was made by Mr. G. Lain. Funds were raised to erect a building on the site. Architect Mr. W.H. Atkinson was appointed to an honorary position on the committee and he designed the building. Tenders for the building's erection were called in August 1912. The Wynnum School of Arts was erected for £900. The contractor was Mr. Peter Olen, who was a builder in Manly and opened on Saturday December 6th 1913 by State Treasurer, Hon. W.H. Barnes. Photo would have been taken after 1922 as it shows (street lighting 1922)

Passing Time

John Pappic





**Left** In 1937, Martin Snelling an auctioneer and land agent constructed on acreage in Peterson Street Wynnum North, Moreton House. Architect was Sidney W. Prior. Two daughters, Mary and Ann rode their donkeys around the Wynnum district. The home remained in the Snelling family till 1959 Moreton Bay College bought and named 'Moreton House'. About 20 students mainly country boarders, lived there while undertaking a post-junior course as a finishing school.

Part of the land was resumed in 1964 and the house returned to a private home in 1967.

It passed through several owners.

**Right** Photo shows 'Moreton House' as it appeared when sold in 2015.



The third son of Mr & Mrs Robert Cribb, William Cribb came to Australia on the 'Fortitude' in 1849.

William eventually rose to the position of manager of the iron monger department of Cribb & Foot Ipswich. William was a man of strong religious principles; he was known to build up church and philanthropic institutions. One of his many interests was the Y.M.C.A. was shown when he generously donation £25,000 to the association of property at the corner of George and Elizabeth Streets for this group.

About 1897 he moved to Wynnum South for health reasons and lived at 'Langville'. William Cribb died at his Wynnum home on 5<sup>th</sup> April, 1928.



**Series 48**  
**photo of the day**  
**No 4**







**Series 48 photo of the day No 5**



This undated photo shows the Masonic Hall situated between Walnut and Havelock (Penfold) Parades stands facing Tingal Road. The Lodge was formed on 16 January 1894 with 24 foundation members. Before the construction of this hall early meetings were conducted in the Wynnum Shire Hall (built 8 August 1890). First Wor. Master was Rev. H.T. Molesworth (who presided over St Peter's Church of England services until 1906).



This photo was taken in 1921 of the Shire Hall situated in Tingal Road Wynnun; celebrations in the form of a Grand Concert took place for the opening of this Hall on 8 August 1890. The matters relating to local business were conducted in this building prior to the district becoming part of the Brisbane City Council in 1925. By 1977 the Old Town Hall outlived its usefulness and was demolished in 1977 to make way for the *Waterloo Bay 50's and Over Centre*. The utility in this photo is believed to belong to the photographer.



**Top L:** By February 1911 land on the railway side of Bay Terrace between Pine and Cedar Streets was purchased with a donation by Mr G. Lain of £100 with the residue of funds being raised by the public to erect a building on the site. Architect Mr. W.H. Atkinson was appointed to an honorary position on the committee and he designed the building. Tenders were called in August 1912. The Wynnum School of Arts was erected for £900. The contractor was Mr. Peter Olen, a builder in Manly and opened on Saturday December 6th 1913 by State Treasurer, Hon. W.H. Barnes.

**Top R:** This photo shows the workmen engaged in the building of the School of Arts in 1913.

**Lower:** Wynnum Manly Show Committee conducted the Horticultural Shows here before going to Russell Park (Memorial Park) in 1919. For many years this building was the central meeting place for many activities such as dances, balls, clubs, lodges, public displays, church meetings etc. The Library was operated by Miss Croft in a ground floor room behind the steps near the gas light shown in foreground. The Library was relocated to the Civic Centre in Bay Terrace when it was built in 1977. This is a more recent photo of the School of Arts. The building came under the Heritage planning scheme policy of the Brisbane City Plan 2014.



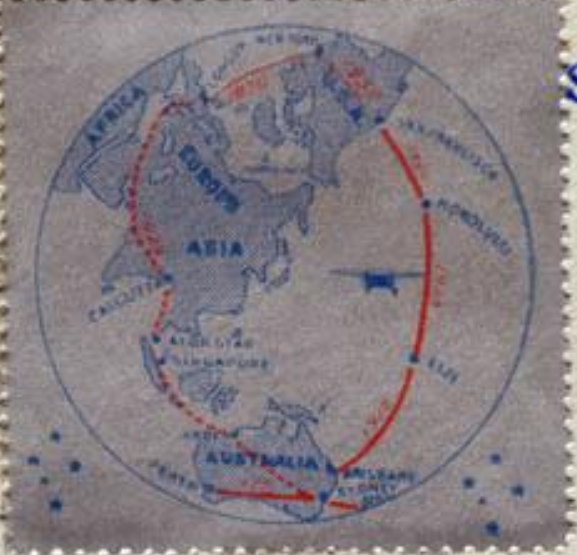
Fr Corrigan represented His Grace Archbishop Dunne when the blessing of the foundation stone was laid in December 1904 of this Guardian Angels' Church, to the design of architect Richard Gailey. It is situated on the beach side of Bay Tce, between Pine and Chestnut Sts Wynnum. •



On 13 May 1902 calling of tenders for a similar structure to the Catholic Church built further along Bay Terrace is this Presbyterian Church also built on the seaward side of Bay Terrace between Cedar and Walnut Street.

Established in 1896 in a building in Chestnut Street the Church was attached to the Bulimba Parish until 1908. It was fully sanctioned and became a separate charge in 1913. The Chestnut property was sold in 1918. With bequests, one from Mr Paterson from the Produce Store, the financial position of the church improved. Tenders were called on 8 May 1959 for the building of a church on the corner of Bay Tce and Walnut St.

SOUTHERN CROSS  
SYDNEY · RICHMOND  
18th July 1935



John Stannage  
Beau Sheil

~~P.G. Taylor~~  
~~C.G. Scrimgeour~~

Mary Kingsford Smith  
John Ulm

Ernest A. Crane  
32 Cavendish St.  
Stammore, N.S.W.

53

This flown cover was carried on Smithy's last flight in the *Southern Cross* on 18 July 1935. The signatures are Charles Kingsford Smith, P.G. Taylor, Beau Sheil, C.G. Scrimgeour, Mary Kingsford Smith, John Stannage and John Ulm. Colin Graham Scrimgeour was a friend of Smithy who had flown the *Southern Cross* and at the time was a radio announcer on Sydney's 2UE. John Ulm was the late Charles Ulm's fourteen year-old son. Source: Phil Vabre Collection