



Wynnum – 1982

Photo No 195

Characters - The Hon David Jull (4 October 1944 – 13 September 2011) was a long-serving Liberal member of the Australian House of Representatives, representing the Division of Bowman, Queensland, during 1975 to 2007. He was Deputy General Manager of the Queensland Tourist and Travel Corporation 1983–84 and was a member of the Opposition Shadow Ministry 1989–94. He served on many committees during his parliamentary career. David Jull was Federal Member for Bowman during the Manly Centenary Celebrations of 1982. Before entering the political field he had been employed in the media of television.

Myrtle Beitz, August 2005



Wynnum – 1930s Photo No 196

View – Aerial - Bay Terrace – Aerial photo with Bay Terrace in the centre of the photo. Careful study shows the Star Theatre in Florence Street, Ingleston Boarding house with the tennis court boarded by a stand of tall palm trees.

Myrtle Beitz, August 2005



Wynnum – 1910 Photo No 232

View –Traders – William (Akonna) Street. The milkman on his rounds and two boys with their goat powered cart. The billy-goat cart races were popular at the Annual Show

Myrtle Beitz, August 2005



Wynnum – 1901 Photo No 193

Schools - Wynnum Central School photo about 1901, just a few years after its opening in 1896.

Myrtle Beitz, August 2005



Wynnum – No 198

Traders - Shops - Corner Tingal Road and Florence Street – Mr George Heymer under the awning of his corner newsagency, close to the Wynnum Central Railway Station. The Daily Mail (2 pence) and the Brisbane Courier later amalgamated to become the Courier Mail. Note the lad with the sugar bag over his shoulder, a very popular means of carrying goods in those days.

Myrtle Beitz, August 2005



Wynnum – 1923-4 Photo No 199 **Sport – Cricket** - Wynnum District Cricket Club – Back Row L to R – J. Switzer, C. Johnson, C. Nelson
Middle Row – R. Mc Nulty, R. Allison, J. Hutchinson, T. Jones, E. Crouch, J. Geddes
Sitting – J. Robertson (Capt), T. Switzer, R. H. Mc Nulty, J. Hutchinson (Snr) N. Crouch, A. Harris, W. H. Peachey (Scorer)
Sitting in front – W. Cloherty.
Myrtle Beitz, August 2005



Wynnum – 1978 Photo No 202

Bay Terrace – Shops - looking south east from Berrima Street corner in 1978 - the tall palm trees slightly to the right is site of the first official Wynnum Post Office, now a funeral parlour.

Myrtle Beitz, August 2005



Wynnum – 1978 Photo No 203 **Bay Terrace – Shops** - Another record of the many times photographed Bay Terrace and Florence Street corner. The hedge, trees, shops and awnings together with Moreton Bay College were removed in 1987 to make way for Franklins shopping complex. *Myrtle Beitz, August 2005*



Wynnum – 1978 Photo No 204

Bay Terrace – Shops - At the corner of Clara Street looking towards the beach - this photo records Ferguson's Travel and Real Estate and the Baptist Church in May 1978.

Myrtle Beitz, August 2005



Wynnum – 1900s Photo No 205 **Sport – Football** - Would appear to be a team of Australian Rules footballers – very likely representing the Wynnum Gordon Club. *Myrtle Beitz, August 2005*



Wynnum – 1932 Photo No 206

Transport – Road – Traders - Morris and Dorothy Bunker in milk cart drawn by “Blue” the horse. Their milk run was No. 707. Photo was taken by George Cooling (Dirty George) donated by Morris Bunker *Myrtle Beitz, August 2005*



Wynnum – year unknown Photo No 207

Schools - Wynnum Central State school children posing for the annual School photo

Myrtle Beitz, August 2005



Wynnum – 1930s Photo No 204

Churches - A gathering of St Peter's parishioners both young and old in Charlotte Street. Rev. Nommenson is third from the right in the fourth line from the front. The gentleman standing on the extreme left, third row, is Mr Sam Greene who in 1914 was Wynnum first mayor. The Rectory is in the background

Myrtle Beitz, August 2005



Wynnum – 1987 Photo No 209

Bay Terrace – Buildings – Bay Terrace and Florence Street – Birchley's Corner – occupied by Hot bread kitchen in 1988.

Myrtle Beitz, August 2005



Wynnum – 1987 Photo No 210

Bay Terrace – Buildings –88.

Bottom – corner Bay Terrace and Charlotte Street is the Commonwealth Building on site of Irvines Commonwealth Stores opened in 1987. after 70 years of occupancy by the Irvine family the store was then occupied by Hartleys in 1966. Subdivision of the store occurred in 1970 and the building fell into disrepair and in 1984 the 87 year old building was demolished.

Myrtle Beitz, August 2005



Wynnum – 1987 Photo No 211

Bay Terrace and Florence Street – Early days in construction of Franklin’s shopping centre in 1987 – site of Moreton Bay College – Wynnum Central School in background.

Myrtle Beitz, August 2005



Wynnum – 1988 Photo No 213

Bay Terrace – Shops - between Florence Street and Charlotte Street – Franklins Shopping Centre under construction – Site of Moreton Bay College. B. Looking south from Bride and Bay Corner *Myrtle Beitz, August 2005*



Wynnum – 1988 Photo No 214

Bay Terrace – Shops – Looking north from Florence Street een Florence Street and Charlotte Street – Franklins Shopping Centre under construction – Site of Moreton Bay College.

Myrtle Beitz, August 2005

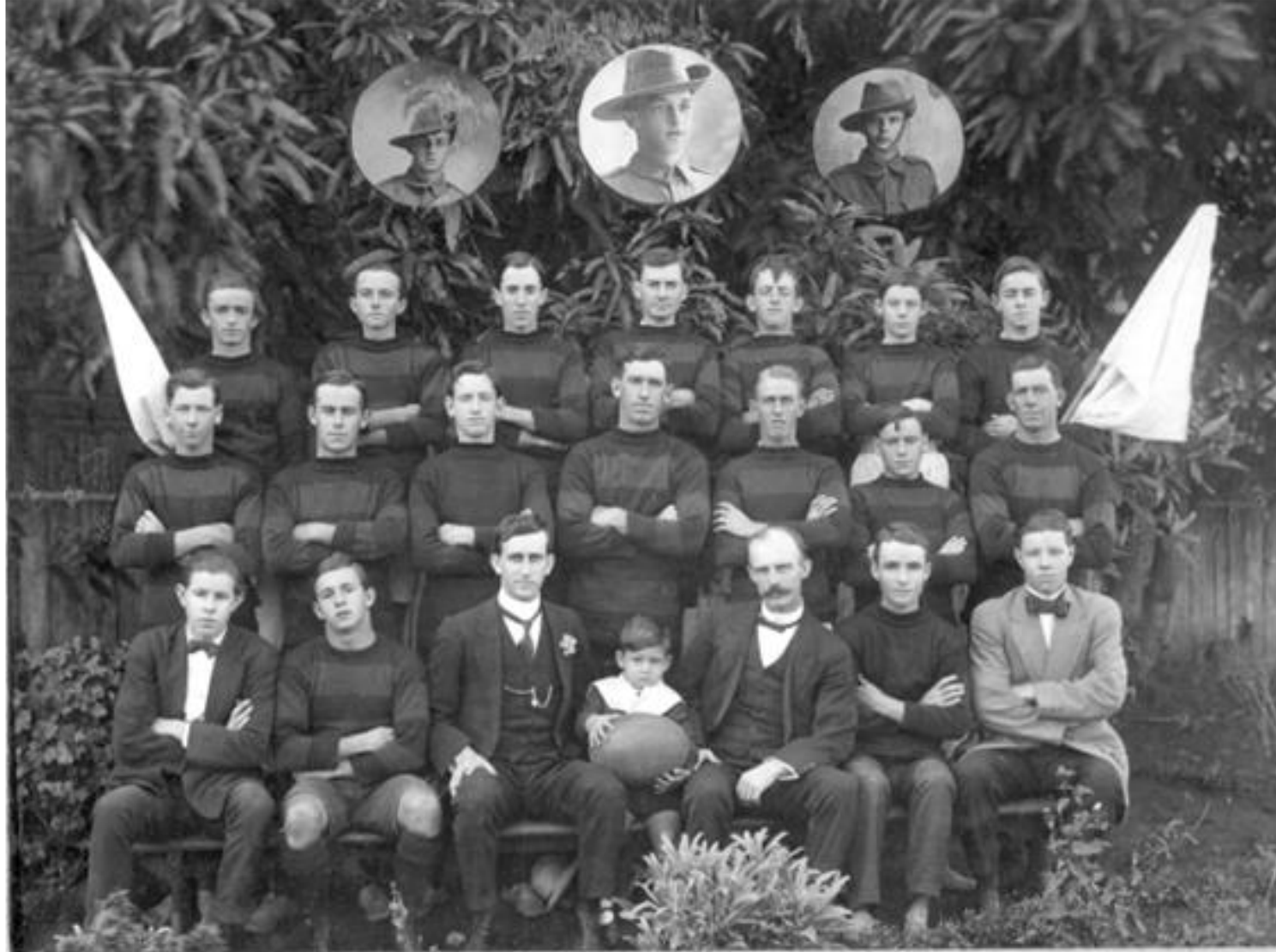


Wynnum – 1988 Photo No 205

Shops - Bay Terrace – Franklins shopping centre under construction – photo taken Florence Street corner 1988

Myrtle Beitz, August 2005

Wynnum – 1916
 Photo No 216
Sport – Football - St
Peter’s Australian
Rules Football Club –
 From insets it can be
 assumed that 3
 members had joined the
 1st A.I.F.



BACK ROW :— P. ROLLEY, E. ELDERIDGE, R. BURGUEZ, S. BEARDON, S. LYONS, G. FERGUSON, D. O'CONNOR.

CENTRE ROW :— J. CLOHERTY, C. NALDER, B. LYONS, A. MILES, R. BAGNALL, D. CLOHERTY, L. PAYNE.

FRONT ROW :— W. BEAMA, R. SIMPSON, A. K. LAWTON, A. LAWTON, JR. L. WATERFIELD, K. STRATFORD, G. BEAMES.
 (Capt.) (President) (Ass. Sec.) (Vice Capt., Sec.)

INSETS :— H. ROLLEY, A. ROLLEY, A. SIMPSON,
 (Late Sec.)

J. J. HOGG. Photo.

Undefeated Premiers Season 1921. Matches Played, 12; Won, 12. Points Scored, 205; Against 28.



FRONT ROW—V. B. Wilson, G. A. Crouch (Captain), J. H. Saunders, Esq. (President), J. Palmer (Coach), V. M. Burgess (Hon. Sec.), F. Palmer.
SECOND ROW—L. Jack, Esq. (Vice-Pres.), E. Cleburny, E. A. Wilson, Esq. (Vice-Pres.), V. Cross, W. Parker, Esq. (Vice-Pres.).
THIRD ROW—H. Lullman, A. T. W. Bullock, E. Dooty, H. Pitt.
FOURTH ROW—H. Burns.
FIFTH ROW—G. Goadby, (Vice-Capt.), G. Bargmann, J. Crust, H. Hayward, A. H. Robinson, A. Crouch, Esq. (Vice-Pres.), V. Pitt, Esq. (Vice-Pres.), A. Miles (Coach), W. Sallot (Vice-Pres.)

Sidney Riley Studios

236 Queen St. Brisbane

Wynnnum – 1921 Photo No 21 7 **Sport – Football** - The Wynnnum Gordon Club was involved in many fields of sport. Here the Rugby League Premiers in B. Grade in the year 1921.



Wynnum – 1910 Photo No 218 (same as 34)

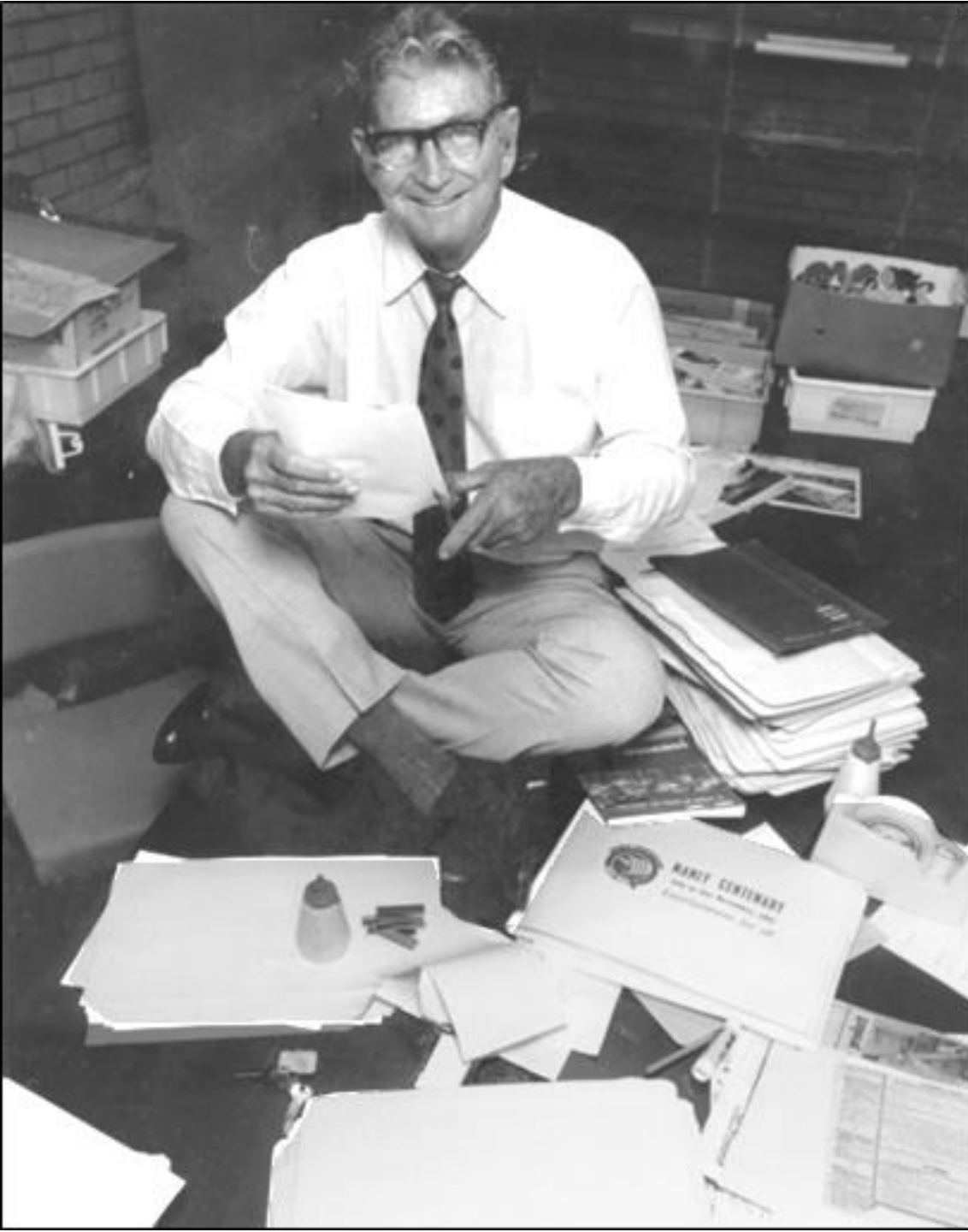
Bay Terrace – Post Cards - looking north about 1910. Photo most probably taken from upper floor of Irvine's Commonwealth Stores. House at bottom of Bay Terrace would be facing Berrima Street. - This and other post cards, printed in Germany were published by H. A. Irvine about this time.

Myrtle Beitz, August 2005



WYNNUM FROM KING STREET, LOOKING EAST.

Wynnum – about 1910 Photo No 219
View – Post Cards - King (Glenora) Street, view looking east. The camera was used at the corner Creek (Coreen) and King (Glenora) Streets – note the slip rail fence
Myrtle Beitz, August 2005



Wynnum – 1987

Photo 210

Charactors - Herald photographer found Merv Beitz in early stages of preparation for opening of the Merv Beitz Room Housing the South Moreton Bay Bicentennial Historical Collection, a joint Rotary and Brisbane City Council together with the Bicentennial Committee. The Room was officially opened by The Right Honorable, The Lord Mayor, Alderman Sallyanne Atkinson, in May 1988.

Myrtle Beitz, August 2005



Wynnum – 1936 Photo No 221 **Beachfront – Events - Esplanade** – Sand garden competitions were conducted by the Courier Mail from Bundaberg to Coolangatta offering gold watches as prizes. Here Audrey Oliver (nee Ballard) with 2nd and 3rd prize winners with her winning garden in the 1936 competition. *Myrtle Beitz, August 2005*



Wynnum

Photo No 222

Characters – Events - The wedding photograph of Sam Irvine, son of the founder of Wynnum Central's first store – his brother Bert is best man. In time, the sons joined the business to become H.A. Irvine and Sons

Myrtle Beitz, August 2005



Wynnum – 1930s Photo No 223

Shops –Traders – Bay Terrace - Irvines - Bay Terrace – Internal view of the store. Prices of the 30s Table clothes 5/6d. (56 cents) to 13/6d. (\$1.36c) etc. The cashier sat in a small raised boxlike room in a central position near the ceiling of the store. The shop assistant would place the invoice and money in a wooden cup which was fired along the wire by compressed springs to be returned by gravity with receipt and change. *Myrtle Beitz, August 2005*



BAY TERRACE, WYNNUM, QUEENSLAND

Wynnum – 1910 Photo No 224

Bay Terrace - Shops – Post Cards - Bay Terrace – Irvines Store opened its doors in 1897. Mr H. A. Irvine left Ireland for Australia in 1882. He was responsible for one of the first stores in Bay Terrace. - By the year 1910 a small butcher's shop was on the Charlotte Street corner and Moreton Bay College had been established in 1901. *Myrtle Beitz, August 2005*



Wynnum – about 1915 Photo No 225

Shops - Bay Terrace – Traders - H.A. Irvine & Sons, Commonwealth Stores est 1897 – family accommodation upstairs where early meeting on a regular basis of the Irvine, Payne, Craig and Alcorn families assembled for worship. The horse and cart was used for home deliveries.

Myrtle Beitz, August 2005



Wynnum – about 1922 Photo No 226

Bay Terrace – Shops – Traders - Extensions to Commonwealth Stores (Irvines) original building 1897

Myrtle Beitz, August 2005



" INGLESTON,"

BAY TERRACE, WYNNUM SOUTH.

PHONE: WYNNUM 41

SUPERIOR BOARDING ESTABLISHMENT.

TENNIS, BOATING, FISHING.

MRS J. PATTERSON, PROPRIETRESS

SIDE VIEW

Wynnum 1900s Photo No 217 **Buildings - Bay Terrace – Boarding Houses** – Bay Tce and Charlotte Street shows Ingleston Boarding House fronting Charlotte Street. The grass tennis court was unfenced and the windmill would have kept the tank filled. Note the steam ship in the bay, mid right of photo. The time of building this popular guest house has not been established. It is known that it was run by Mr and Mrs Patterson and later M.H. Johnson was the proprietress and she was known to advertise the establishment as being *'Home away from home, cuisine the best and terms moderate'* This boarding house was burnt to ground in 1946 and the Civic Centre was built on the site in 1977. *Myrtle Beitz, Aug 2005*



Wynnum – 1900 or earlier Photo No 228

Beachfront – looking south from the Wynnum Creek. This photo shows a sandy patch before the sea walls were built. No 2 Jetty was built about 1884 and the other jetty with changing boxes could have been that of Ingleston's or Waterloo Bay Hotel.

Myrtle Beitz, August 2005



Wynnum – 1915 Photo No 229

Industry - Bay Terrace - Events - Grounds of School of Arts. Heads bowed for the opening of the Horticultural Shows.

Looking north can be seen the side view of Convent. *Myrtle Beitz, August 2005*



Wynnum – 1915 Photo No 230 **Industry – Events** - First Wynnum & Manly Districts Horticultural Show held in School of Arts, Bay Terrace Wynnum. The camera captures Hargreaves display to left and the flower and art display to the left.

Myrtle Beitz August 2005



Wynnum – 1915 Photo No 231 **Industry – Events** - First Wynnum-Manly Districts Horticultural Show held in School of Arts, Bay Terrace in 1915 shows the display of cakes and art work. *Myrtle Beitz, August 2005*



Wynnum – 1959 Photo No 232 **Beachfront – Buildings – Bandstand** in front of Imperial Theatre at foot of Florence Street. The lower section of the double storied Bandstand after the mistaken removal of the upper floor which became another stand for awhile. Photo shows the back of the Honour board for World War I soldiers (firstly placed on Green Island then here later to R.S.L. Hall Manly)
Both sections were removed later. Water fun park occupies this site at Pandanus Beach in 2004. *Myrtle Beitz, August 2005*

Wynnum Creek, Wynnum, Q.



Wynnum – 1912 Photo No 233

Creek – Boats – Post Cards - looking upstream from north bank of the Wynnum Creek. in the 1880s the fishing boats were depended on sail and the oars. The kiosk with the eagle on top is in background. This photo was taken before the second Fox Street Bridge was built in 1921.

Myrtle Beitz, August 2005



Wynnum – 1922 Photo No 244

Creek – Houses – mouth of the Wynnum Creek taken from the north bank looking south. Jetty No 2 can just be seen in distance. No break wall yet as it was not built till 1940.

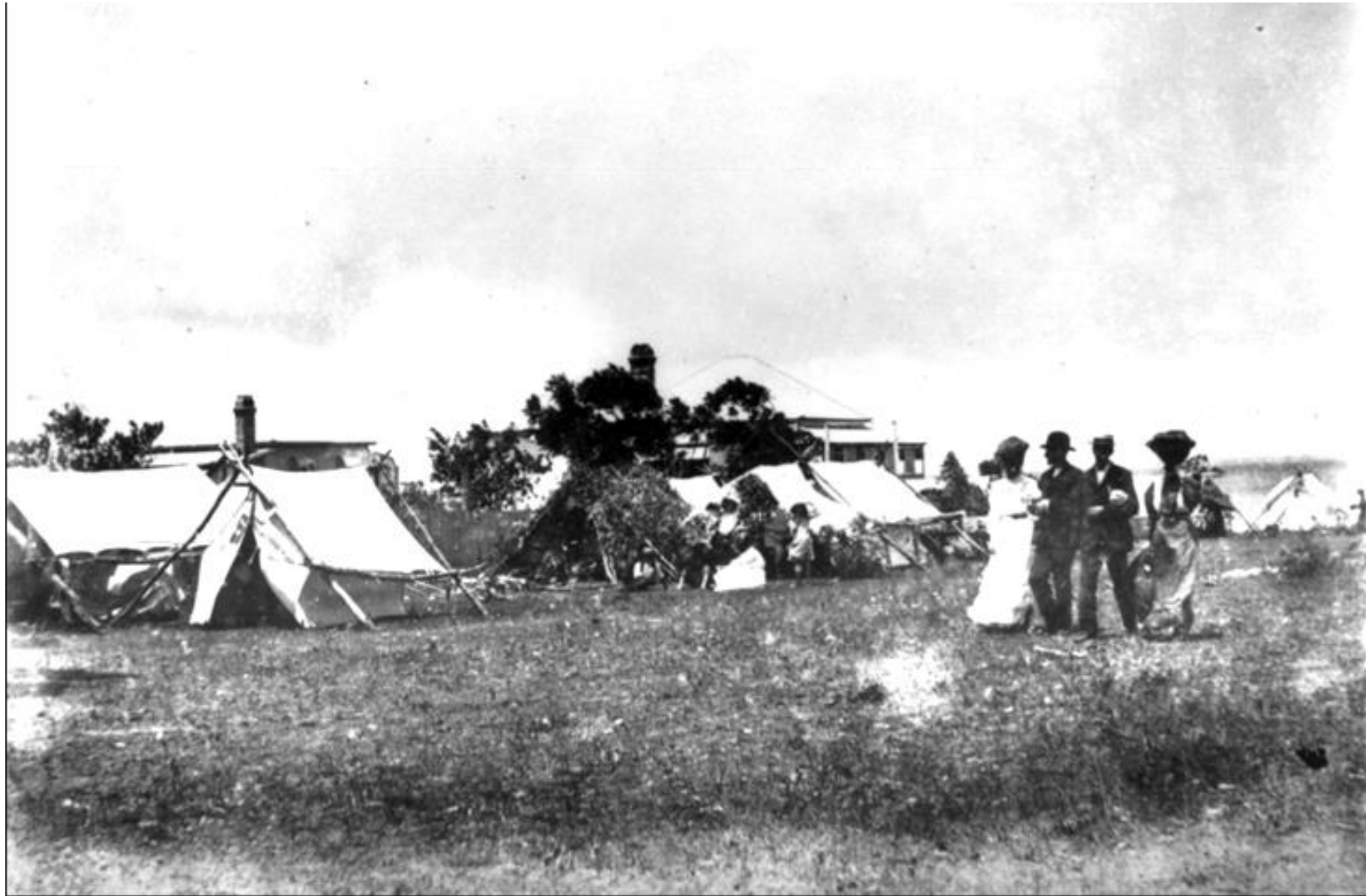
Myrtle Beitz, August 2005



Wynnum – after 1921 Photo No 235

Creek – Industry – Boats - fishing boat *Chance 1* built for Charlie Payne by Jim Crouch in 1912 with Arthur Payne at tiller
The newly completed in 1921 is the Fox Street Bridge in background.

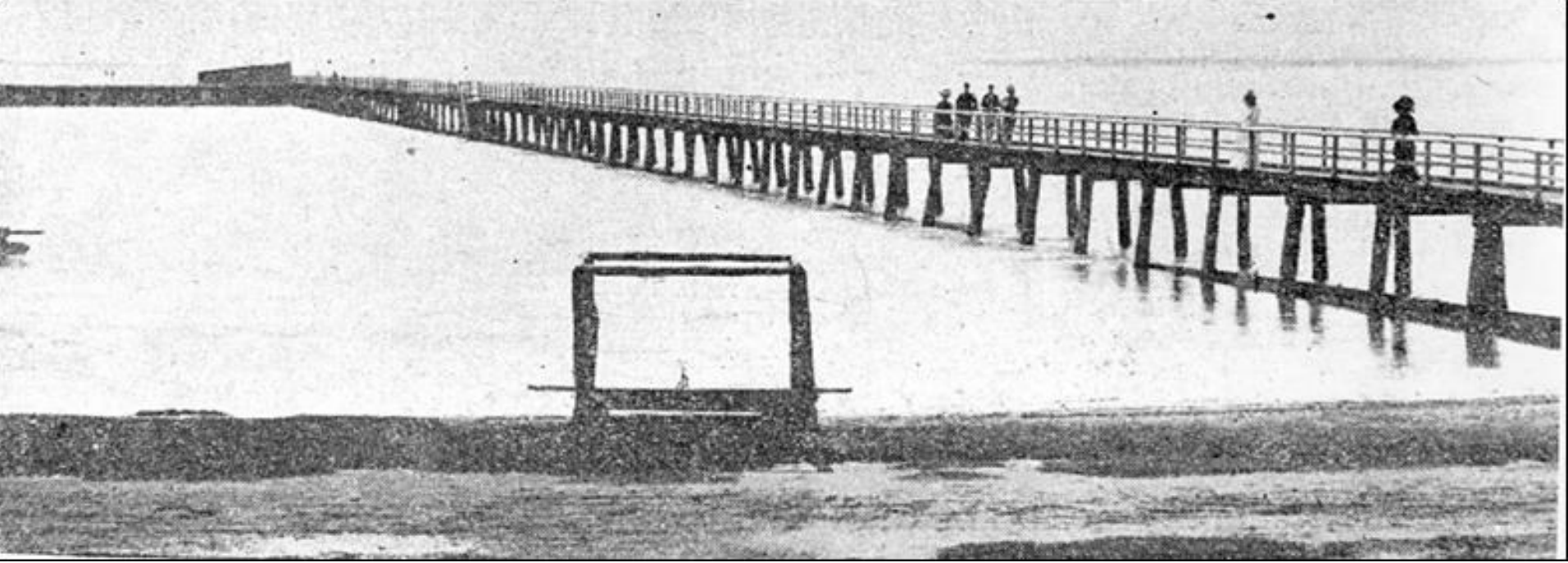
Myrtle Beitz, August 2005



Wynnum – 1907 Photo No 236 **Beachfront - Camping** - on the foreshore in the days of bush tents, brush frames and shady extensions. Study the two gentlemen and their partners to understand the accepted standards of dress for people holidaying at the seaside. *Myrtle Beitz, August 2005*



Wynnnum – after 1920 Photo No 227 **View – Aerial** - photo of Wynnnum – Jetties Nos 1 and 2 – salt pan to right was known as *Black camp* In 1933 council referred to this area as *Beach End* but people did not accept this name even though it appeared on maps. The area is now officially known as *Elanora Park* (meaning *camped by the sea*) and this has been accepted – photo taken after 1920 as fish markets can be seen. MB 2005



Wynnum – 1906 Photo No 238

Beachfront – Jetties - Jetty No 1 with tidal baths at the end is popular with visitors to walk in the cool breezes. Sloping roof of changing boxes and slant of pylons indicate this to be Jetty No 1

Myrtle Beitz, August 2005



Wynnum – 1904 Photo No 239 **Beachfront – Parks** - Picnickers arrived by horse-drawn vehicles to picnic in The Reserve (Greene Park). Horses are tethered under the shade of the trees. Dress for both male and female is very formal. MB



Wynnum Photo No 240 **Industry – Fishing** – Location *could* be on the northern beach at St Helena, with Mud Island in the distance. Fishermen's nets are drying. Date after the closing of the prison on St Helena in the 1920s. *Myrtle Beitz, 2005*



Wynnum – 1922 Photo No 231 **Beachfront** - A faded shot of beachfront near Berrima Street showing Jetty No 1 in background taken in 1922. Folk resting on seat in shade of tree planted by a thoughtful Council of the past. Johnston Smyth was employed by council in 1895 to care for the trees planted on the foreshore for a salary of £4/18/6 Myrtle Beitz, A 2005

WYNNUM GORDON FOOTBALL CLUB.

(AUSTRALIAN RULES).



Back Row—
 Third Row—
 Second Row—
 Sitting—
 In Front—

E. McKellar	F. W. McCaughey	A. Belding	H. Hogg	W. East	F. D. Meares	H. Goodman
H. J. Shepherd	W. Hight	H. Hamilton	H. G. Crofts (Capt)	H. J. Smith	A. Charlton	H. Green
G. Cavanagh	J. Gemmill (Capt)	L. Floyd	A. C. Jeffrey (Pres)	A. H. Bolton (Vice-Capt)	F. Martin	H. Moore (Vice-Pres)
Inst—Hon. W. H. Barnes, M.L.A. (Patron).						

J. S. Wiley
 WYNNUM

Wynnum – 1910 Photo No 233 **Sport – Football** - Australian Rules team. This photo shows interesting people in this 1910 Wynnum Gordon Football Club – Albion Charlton (second back row) – A.C. Jeffrey Chairman of Wynnum Divisional Board – Insert, W.H. Barnes, one time treasurer and Acting Premier of Queensland who is honoured by a Memorial Stone on beach near Wading Pool. *Myrtle Beitz, August 2005*

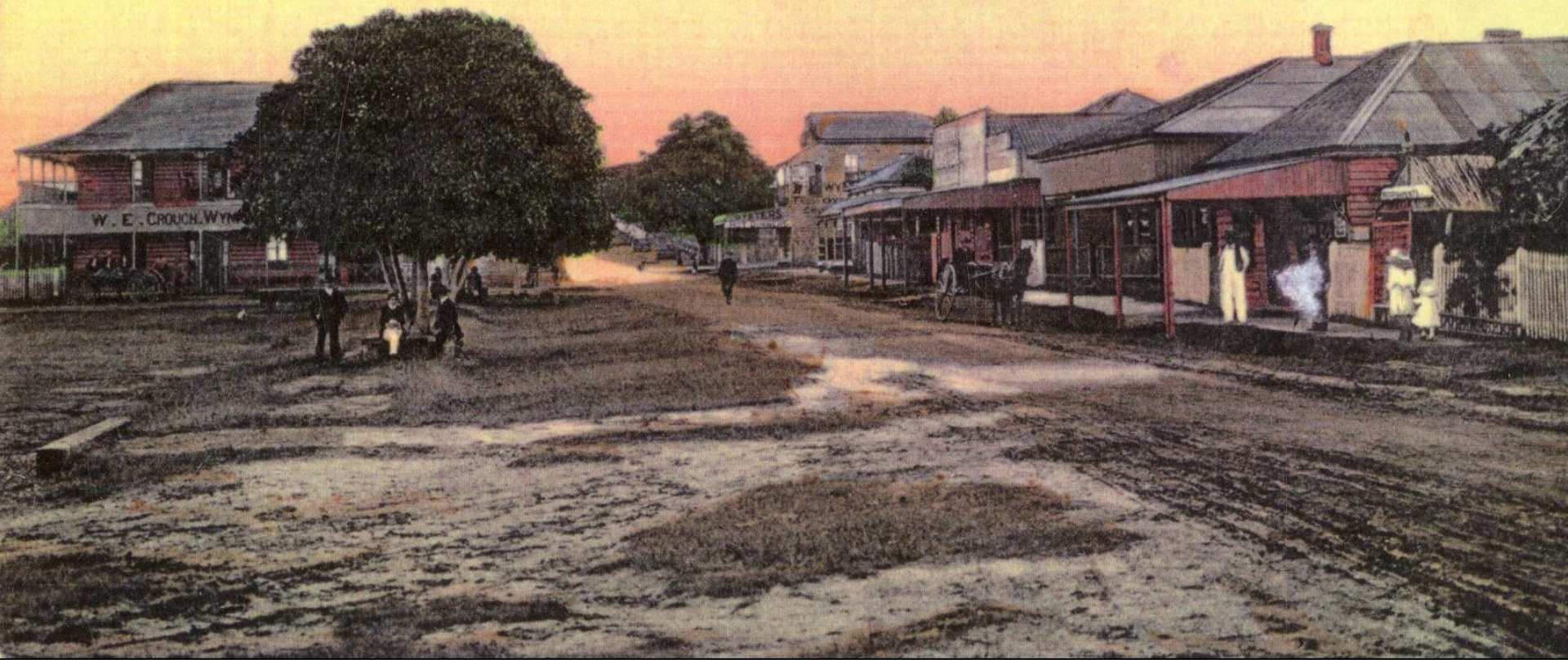


Wynnnum – about 1910 Photo No 243

View – Post Cards - Early view from Prospect Street looking south to mouth of Wynnnum Creek across to Darling Point - both Jetty No 1 and 2 are visible. Housing is sparse. This postcard is one in the “Coloured Shell Series, Queensland Views” printed in Germany.

Myrtle Beitz, August 2005

King Street, Wynnum, Queensland.



Wynnum Photo No 244 **Shops – Post Cards – Buildings** - King (Glenora) Street looking west from Esplanade - the building on the L is a Hotel with the words W.E. Crouch, Wynnum on the awning. This later became the Fisher's Hotel (Wynnum Hotel). Parkland was "The Reserve" later Greene Park - high building at R hand end of street built by Sam & Bill Greene, occupied by the Woodhouse family - shop on right was built by Louis Weber an early settler - the O'Neill family ran it from about 1920 then Grahams from mid to late 1930s - building with chimney belonged to Mr & Mrs Hagensen, a tea house which ceased operating during World War I. In the late 1930s there was a cricket pitch on "The Reserve" . At Sunday matches local fishermen would string nets around edges of park to prevent damage to close houses by cricket balls. MB

No. 2 Jetty, Wynnum South, Queensland.



Wynnum – 1911 Photo No 236 **Beachfront – Jetties – Post Cards** - strollers on the old wooden Jetty No 2. Steamers landed prospective buyers in 1884 at this jetty for the first East Wynnum Estate auction. This photo was taken before the Wading Pool was built in 1933. The Roman Catholic Church built 1904 can be seen south of tall trees. This is one of a series of colour post cards printed in Germany. Handwritten on reverse dated 3 August 1911.

Myrtle Beitz, August 2005



Wynnum – 1910 Photo No 237 **Beachfront – Jetty – Post Cards** - Classic photo of gentleman leaning on rails of Jetty No 1 at Wynnum Creek. He would be one of many who enjoyed a stroll on the jetties at Wynnum. Note the straw boater hat and his suit. Mr & Mrs Louis Webber's shop would have been one of these early shops seen here in King (Glenora) Street. These shops would have been the first to open their doors in the district. Post card published by Irvines Series No 1542, printed in Germany

Myrtle Beitz, August 2005



Wynnum –1900s Photo No 247 **Creek – Post Cards – Bridges** - This Fox Street Bridge replaced a narrow foot bridge in 1899. Shopkeepers of King (Glenora) Street opposed its building thinking they would loose trade to the advancing Bay Terrace shopkeepers after the rail line came to the district in 1889. The Hon J.A. Fihelly, Treasurer and Minister for Works opened the next Fox Street Bridge on 6 July 1921. Kiosk can be seen on north side of the creek. High tides encroached the vacant area known as “The Reserve” later became Greene Park which was the home ground for Wynnum Sparks Vigoro team.– Post card, Series 1535 published by Irvines printed in Germany *Myrtle Beitz, August 2005*



WYNNUM FROM KING STREET, LOOKING EAST.

Wynnum – 1907 Photo No 248 **View –Transport – Post Cards** - photo taken from corner Creek (Coreen) and King (Glenora) Streets– note the slip rail fences and the faithful horse and cart. Post Card – Edco Series No 1234 – Printed in Germany – Postmark on reverse Dec. 5 1907.

Myrtle Beitz, August 2005