



Wynnum – 1982 Photo No 93

Sport – Football - The “Greats” of past Wynnum-Manly Rugby League football teams who were brought together for a reunion in 1982 – Among the Super Gulls of the last 30 years were;

Back Row L – R, Colin Scott, Lionel Morgan, John Wittenberg, John Dowling, Les Greenhill, Lew Platz, Des Morris, Gary Seaton and Paddy Crouch.

Front Row L – R, Ivan French, Bill Mc Dermott, Bob Hardie, Arthur Lovell (President) Rex Fox, Jim Glass and Keith Brown.

Myrtle Beitz, August 2005



Wynnum – 1926 Photo No 94

Sport – Bowls - Bowlers and official guests at the Wynnum Bowling Club opened by Mr Jas. Johnson, Pres Qld Bowling Assn on 10 April 1926 - Club President was Mr W. H. Aitkin.

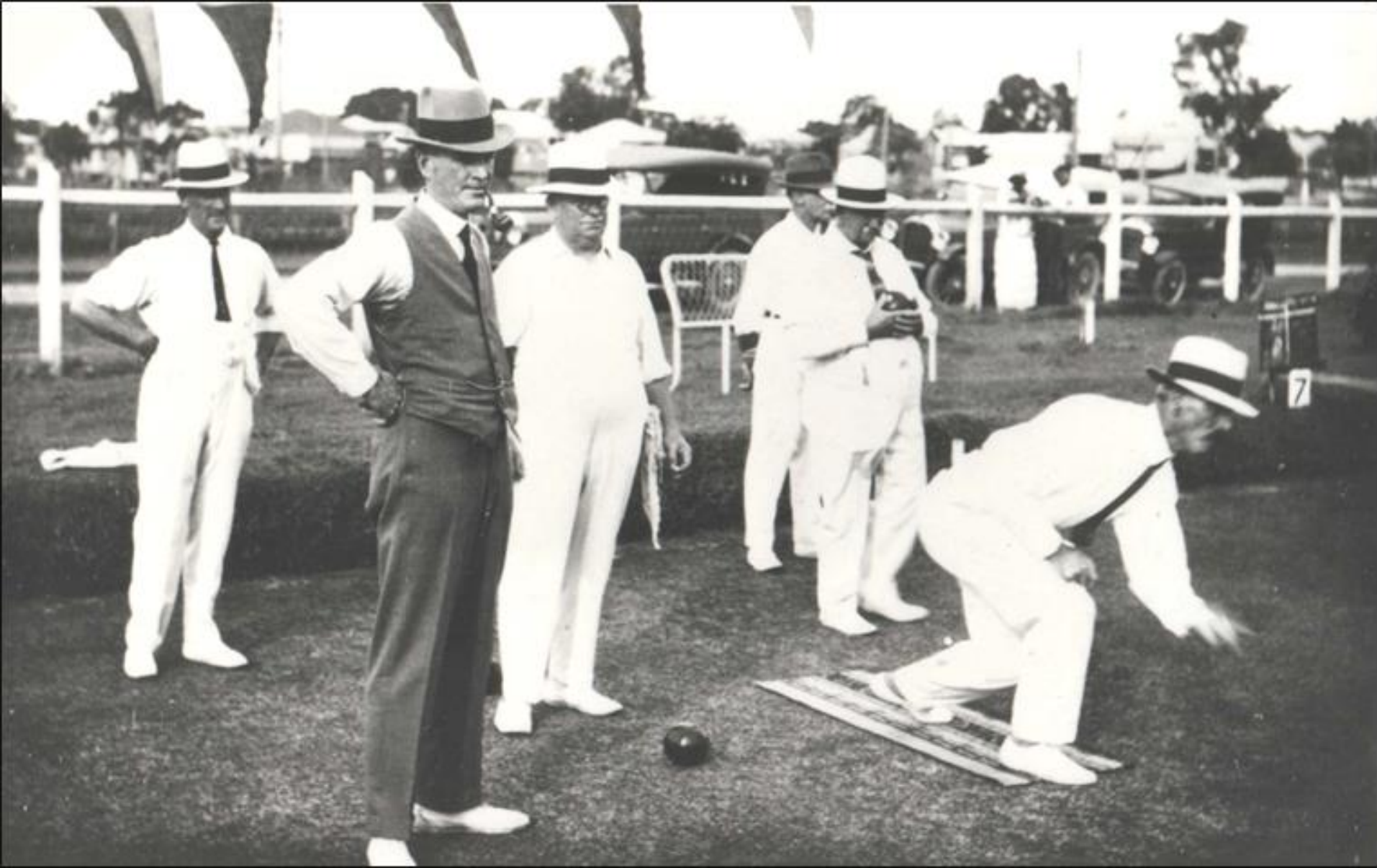
Myrtle Beitz, August 2005



Wynnum – 1926 Photo No 95

Sport – Bowls - Club President, W.H. Aitkin addresses some 300 persons who attended the opening of the Wynnum Bowling Club on 10 April 1926.

Myrtle Beitz, August 2005



Wynnnum – 1926 Photo No 96

Sport – Bowls - Sending down one of the first bowls at the newly opened Wynnnum Bowls Club on 10 April, 1926.

Myrtle Beitz, August 2005



Wynnnum – 1926 Photo No 97

Sport – Bowls - Opening day Wynnnum Bowls Club - the background gives a good view of the home of Sam Greene who was the first Mayor of Wynnnum when the local authority was declared a Town in February 1913.

Myrtle Beitz, August 2005



Wynnnum – 1926 Photo No 98

Sport – Bowls - Wynnnum Bowling Club was opened for competition on 10 April 1926 - a view of members and wives who were present on the first day.

Myrtle Beitz, August 2005



Wynnum – 1926 Photo No 99

Sport – Bowls – **Buildings** - the new Club House and green was soon a scene of happy bowlers and their friends following the official opening on the 10 April 1926

Myrtle Beitz, August 2005



Wynnum – 1890s Photo No 100 **Characters** - Family portrait of Robert Louise Stevenson (Author of Treasure Island) and his family at Hunters' Hill Sydney in 1890s.

L to R – His wife, Robert, an adopted daughter, and his mother - Robert's uncle John Balfour, a station owner from the Brisbane Valley was the first owner of all land which stretched along the seaward side of Tingal Road from Wynnum Creek to Wynnum North School.

Myrtle Beitz, August 2005

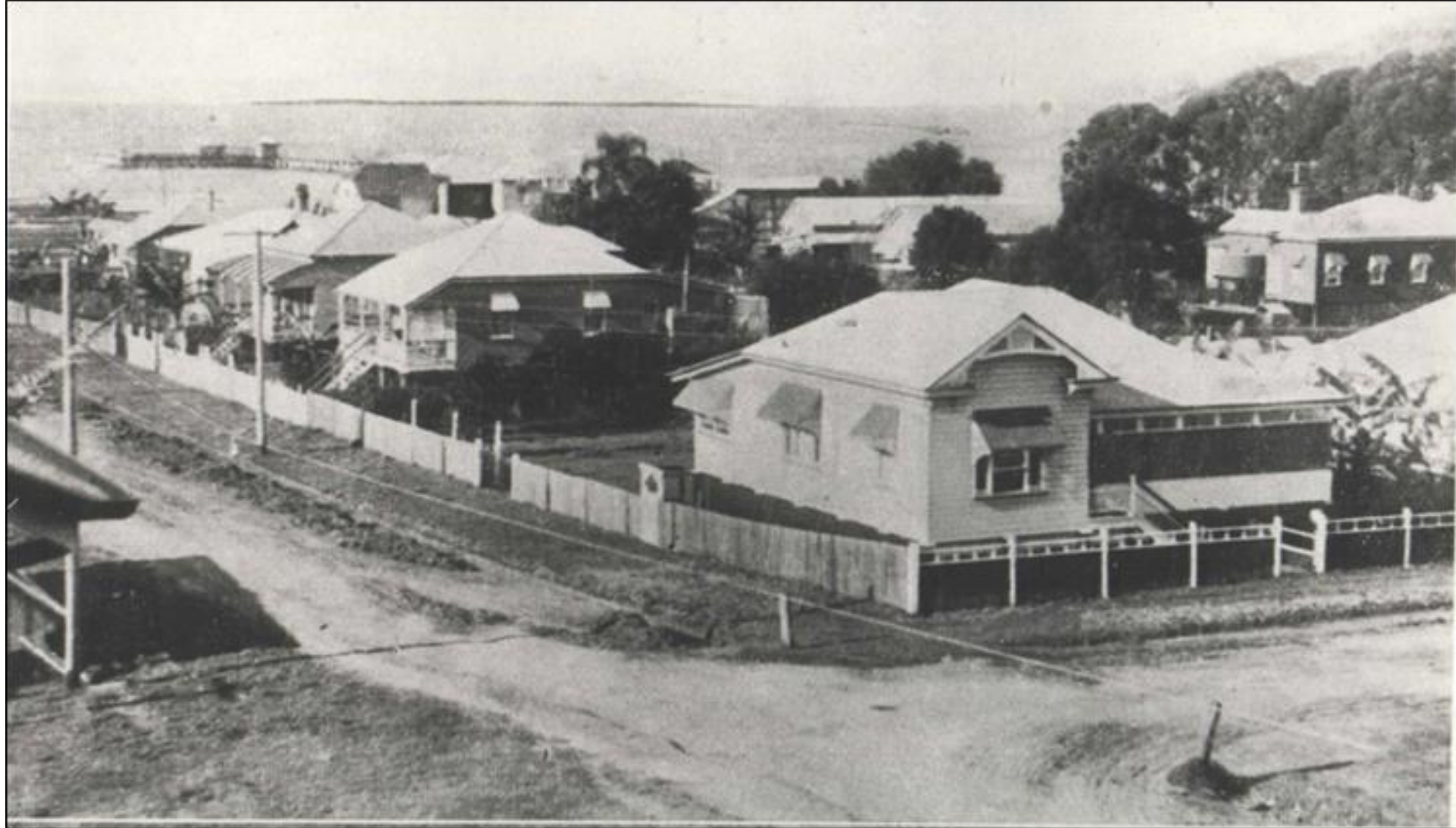


Wynnum Photo No 101

Characters - Shepherd Smith – General Manager of the Bank of N.S.W. from 1865-1886 – when baptised a discerning *given* name was bestowed on him by his parents. A total of over 170 acres lands was owned by Shepherd throughout Wynnum Manly Lota - Shepherd Street, Wynnum North perpetuates his name.

Myrtle Beitz, August 2005

Mangroves to Moorings expands on this gentleman's career.



Wynnum – 1921 Photo No 102

Buildings - houses towards the beachfront in Charlotte Street. This photo shows the gravel road with grassy footpaths. Photograph taken from verandah of Ingleston's Boarding House looking towards the beach – note Jetty No 2 and tidal baths, Green Island. the high facade of Empire theatre, before it was burnt down in 1922.

Myrtle Beitz, August 2005



Wynnum – 1910 Photo No 103

Buildings – Transport - Appears to be in the area north of the Creek because of the rise in land to the left - interesting point is the boy with his hardworking goat - still many vacant allotments not yet built upon. *Myrtle Beitz, August 2005*



Wynnum No 106

View from corner Kingsley Terrace and Wolsey Parade in 1910



Wynnum – 1930s Photo No 109 **Transport – Lytton** –This photo shows Smithy’s *Southern Cloud* at Lytton Strip.

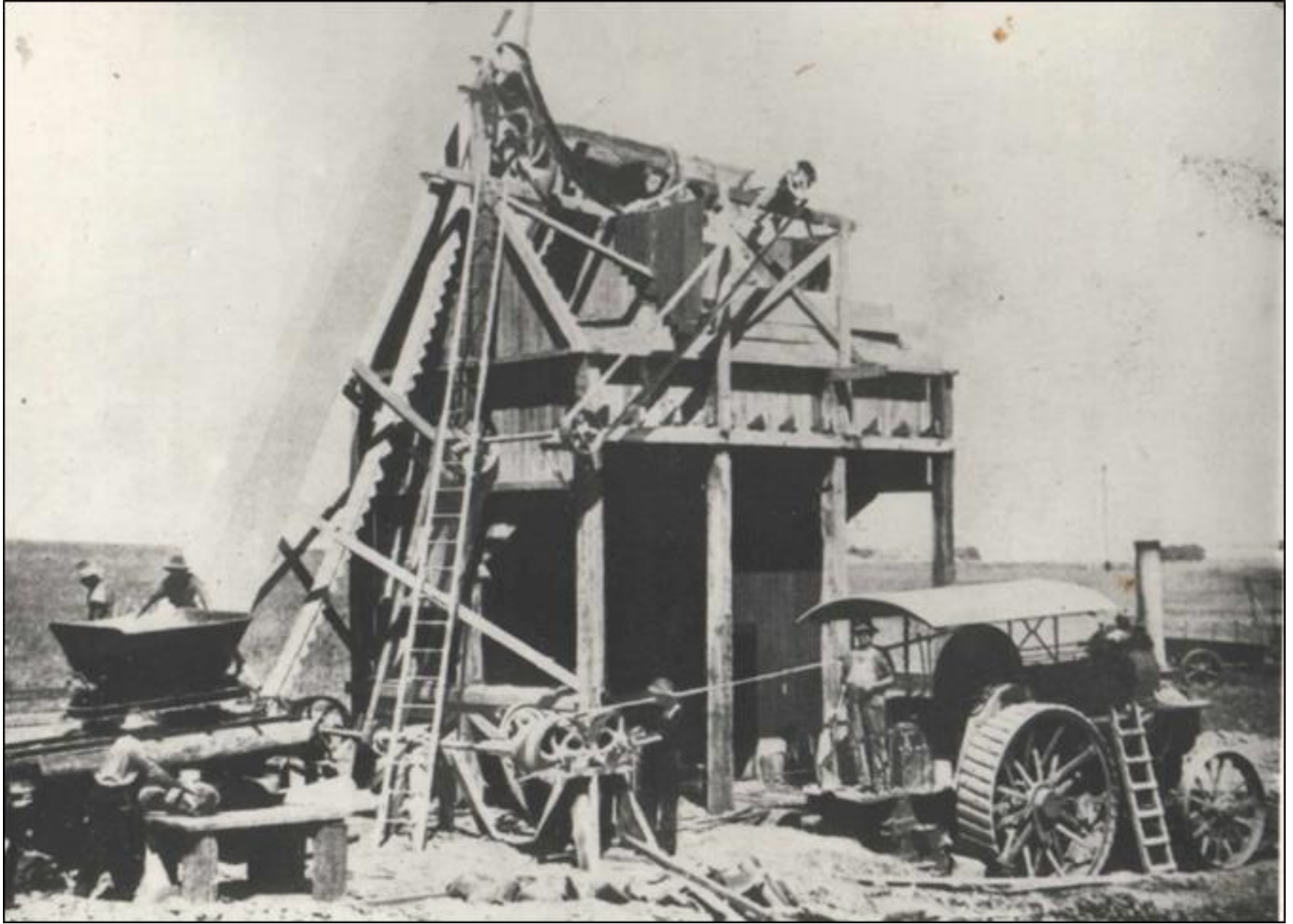
On 21 March, 1931 The *Southern Cloud* departed at 8.10am from Sydney for Melbourne. On board were six passengers and two crew, pilot was Travis “Shorty” Shortridge. Weather conditions en route were hazardous and much worse than predicted. Charles Kingsford Smith joined in the search but to no avail. The disappearance of this plane remained a mystery for 27 years until 26 October 1958 when Tom Sonter, a worker on the Snowy Mountains Scheme made a chance discovery of the wreck in heavy timbered mountainous terrain. Wreckage is displayed in a glass case on the outskirts of the township of Cooma, N.S.W. *Myrtle Beitz, August 2005*



Wynnum – about 1914 Photo No 110

Lytton – Military –The flat ground at Lytton was used during World Wars I and II for army training and defense forces - the tall round white tents were referred to as Bell Tents. Between the wars this area was the landing ground for Kingsford Smith's infant A.N.A. Flying Company.

Myrtle Beitz, August 2005

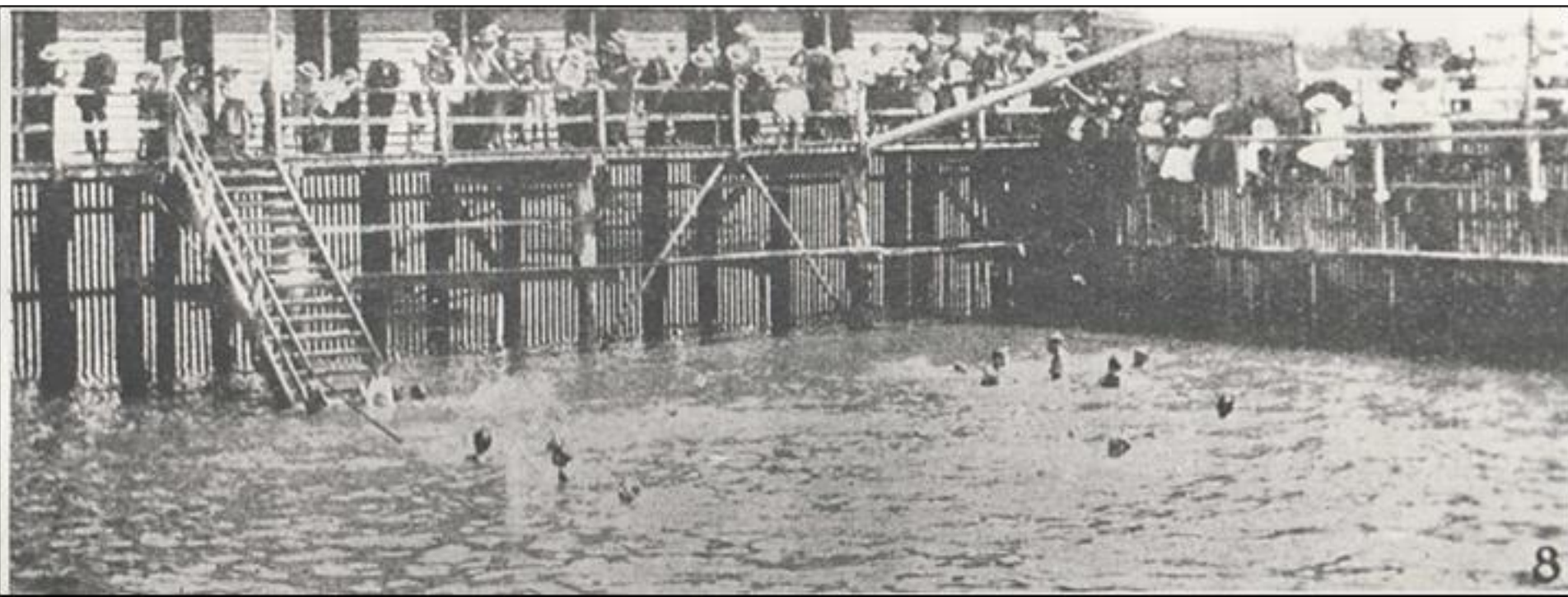


Wynnum – 1921 Photo No 111 **Industry – Local Authority** - A large fly wheel on the steam roller drove a long belt attached to the crushing plant to provide stone raised in little buckets before being dropped between the crushers to provide gravel for road-making. This plant was at the summit of Tingal Hill on the site of the old Lytton School. Cars were replacing the horse-drawn vehicles, so there was a demand for better streets and roads. *Myrtle Beitz, August 2005*



CHILDREN'S WADING POOL, WYNNUM CENTRAL

Wynnum – 1932 Photo No 113 **Wading Pool - Beachfront** - The Wading Pool built by 'relief workers' during the depression years. An area known as a salt pan near Jetty No 2 was chosen to wall to form this wading pool, an area of 600 ft by 200 ft. No excavation was needed and in the retaining wall three flood gates were installed to allow the pool to fill at high tide. This is the crowd attended the official opening in 1932. Reported in the Daily Mail on 4 April 1922 was an ambitious Reclamation Scheme was proposed by Ald J. Patterson but was rejected by council even though the Mayor at the time Ald J.W. Greene thought the scheme had merits but they did not think the cost could be sustained. This pool could have been a scaled down version of the proposal. *Myrtle Beitz, August 2005*



Wynnum – 1907 Photo No 116

Baths - Jetties - Beachfront –Esplanade – Jetty No 2 Tidal baths seems to have more spectators than swimmers. It was low tide as the lower walkway became covered when the tide was high. A safety rope comes from the steps, it could also divide areas for male and female swimmers. A bay boat can be seen through the shark proofing enclosure.

Myrtle Beitz, August 2005

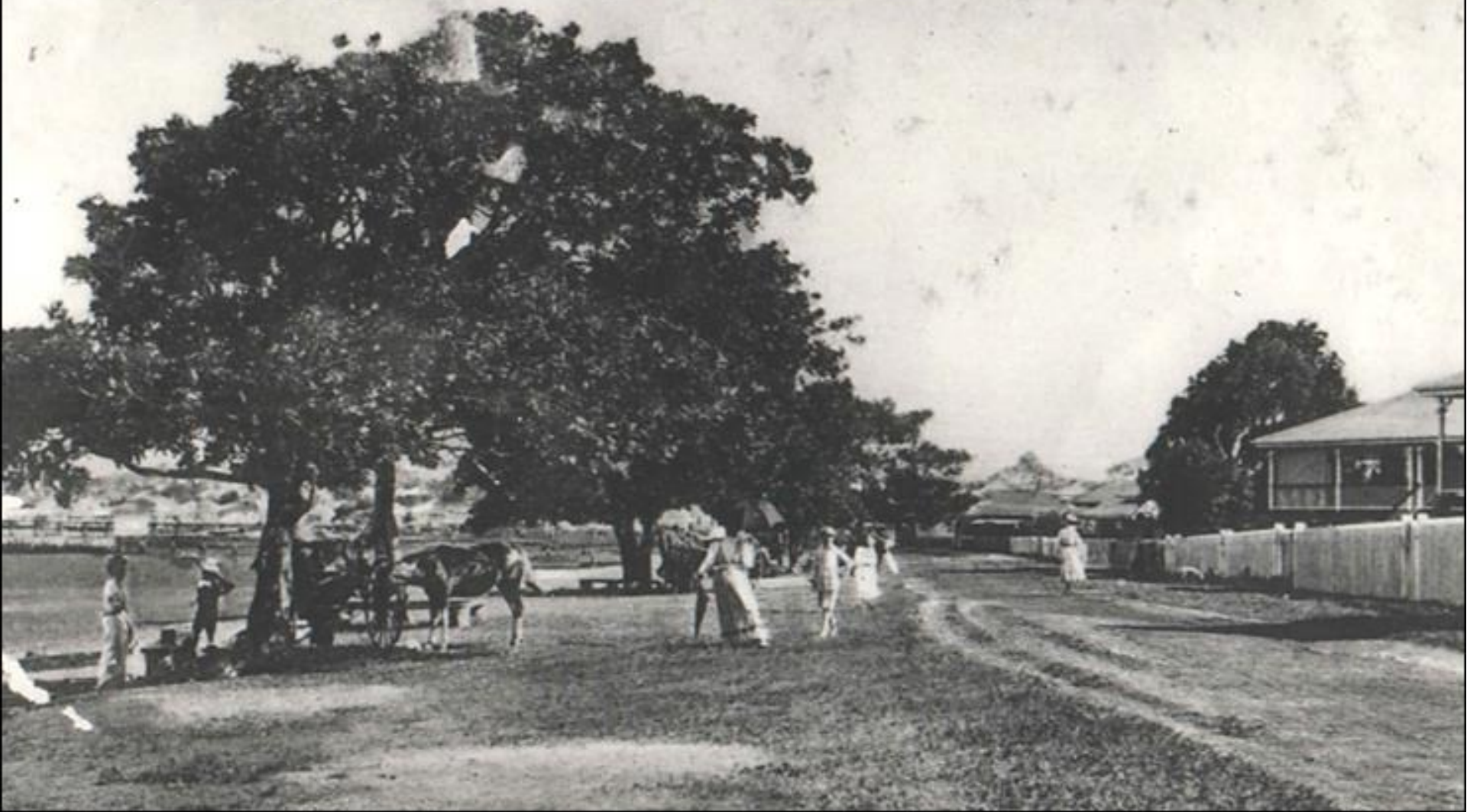


Wynnum – 1921 Photo No 117

Shops – Traders - Esplanade between Florence and Charlotte Streets is the location of these two shops on beachfront on the northern side of the Imperial Theatre. Major's Café, provided refreshments for day visitors to the beach and also to patrons of the Theatre - this section was replaced by home units. Pandanus Beach was created opposite in 1987.

Myrtle Beitz, August 2005

The Esplanade, Wynnum South Queensland.



Wynnum – 1920 Photo No 118

Beachfront - Esplanade – beachfront between Bride and Charlotte Streets - the benefit of the earlier planting of trees is evident - horse and buggy is still the mode of transport. The Sargent's home *Brittannia* is visible.

Myrtle Beitz, August 2005



THE ESPLANADE, WYNNUM Q.

Wynnum – 1920 Photo No 119 **Beachfront – Post Cards** - Esplanade between Berrima and Florence Streets - trees planted by J. Smyth before the turn of the century have grown. The retaining wall has not yet been built. Registration fee of 10/- enable owners to allow their stock to roam the streets for grazing - by the 1930s this was restricted to streets and open lands only on the western side of the railway line, disallowed after World War II. *Myrtle Beitz, August 2005*



Wynnum – 1900s Photo No 120 **View** - to Wellington Point and Stradbroke Island from a hill at Wynnum North, north of the Creek and Jetty No. 1 Early building took place around the Creek . This is a very early photo most probably taken just after the turn of the century.

Myrtle Beitz, August 2005



Wynnum – 1915 Photo No 121

Beachfront - Esplanade – looking south from Wynnum Creek, good supply of sand - no retaining walls yet - advancing wall in left foreground - privately owned bathing boxes which could belong to Ingleston's Boarding House or Waterloo Hotel. (Allowed by Council for 10/- a year) - larger Jetty No 2 in centre of photo.

Myrtle Beitz, August 2005



Wynnum – 1930s Photo No 12 2

Beachfront -Esplanade – Christmas time brought the South Queensland sand garden competitions conducted by the Courier Mail – This year they took place north of the Wading Pool (site of Pandanus Beach)

Myrtle Beitz, August 2005



Wynnum – 1986 Photo No 123

Buildings – Units - Esplanade – between Florence and Charlotte Streets - removal of the Imperial Theatre and adjacent buildings made way for home units to be built. The parked vehicle is the photographer's P 76 motor car. These units overlook Pandanus Beach.

Myrtle Beitz, August 2005



Wynnum – 1920s Photo No 124

Creek – Industry - a quiet day at the Fish Markets – The Moreton Ice and Cold Storage Co. replaced the small depot in the first days of the fishing industry – Mr W. R. Howard as Proprietor had supervised the construction of the ice making plant and fish receiving market in 1926. Before the introduction of refrigerators a daily delivery truck ensured householders of a supply of block ice for the family ice-chest – the property was large enough to have a dual role of fish depot and ice works.

Myrtle Beitz, August 2005



Wynnum –1920s Photo No 125 **Beachfront – Jetties - Esplanade** – Fashionable ladies stroll the jetty. Sailing vessels are tied up to the jetty for easy access. Swimmers are enjoying themselves on Wynnum Central Jetty No 2.

Myrtle Beitz, August 2005



Wynnum – 1900s

Photo No 126

Buildings – Kiosk - situated in Fox Street, south of King (Glenora) Street and north of Fox Street Bridge. Visitors could enjoy refreshments at this café while viewing the boats in the Wynnum Creek. It served as a butcher's shop before being demolished. The attractive eagle on top became the property of the "Early Street" Pioneer Museum near Coorparoo. At one time there was a weather cock attached to the spire. - Boat yards occupy the site in the year 2005

Myrtle Beitz, August 2005



Wynnum date unknown Photo No 127

Creek – This is a very early photo of mouth of Wynnum Creek. The Jetty No. 1 had been built in 1889 (swimming enclosure built by Dart & Greene in 1891). Note the racks for drying the fishing nets. Photo would have been taken from southern bank. The fishermen on northern bank are attending to their nets. This photo could have been taken about the same time as photo 112. *Myrtle Beitz, August 2005*



Wynnum – 1900s Photo No 128 **Creek** - traffic bridge which connected the north side residents to the growing area of the southern side stretching back to the expanding Bay Terrace.

Myrtle Beitz, August 2005



Wynnum – 1900s Photo No 129 **Creek** – Another view of the controversial Fox Street traffic bridge connecting the north and south banks of Wynnum Creek. After the railway line in 1889 many visitors came to the area. Bay Terrace was starting to develop too. The southside King Street shop owners did not want this traffic bridge in case their trade would be lost to Bay Terrace traders. *Myrtle Beitz, August 2005*



Wynnum – 1920s Photo No 130 **View** - Photo taken from Wynnum North hill above Blacks Camp (Beach End then Elanore Park) - Both Jetty No 1 and 11 are visible - housing is sparse on the flat but filling on the hill - Wellington Point is visible in the distance.

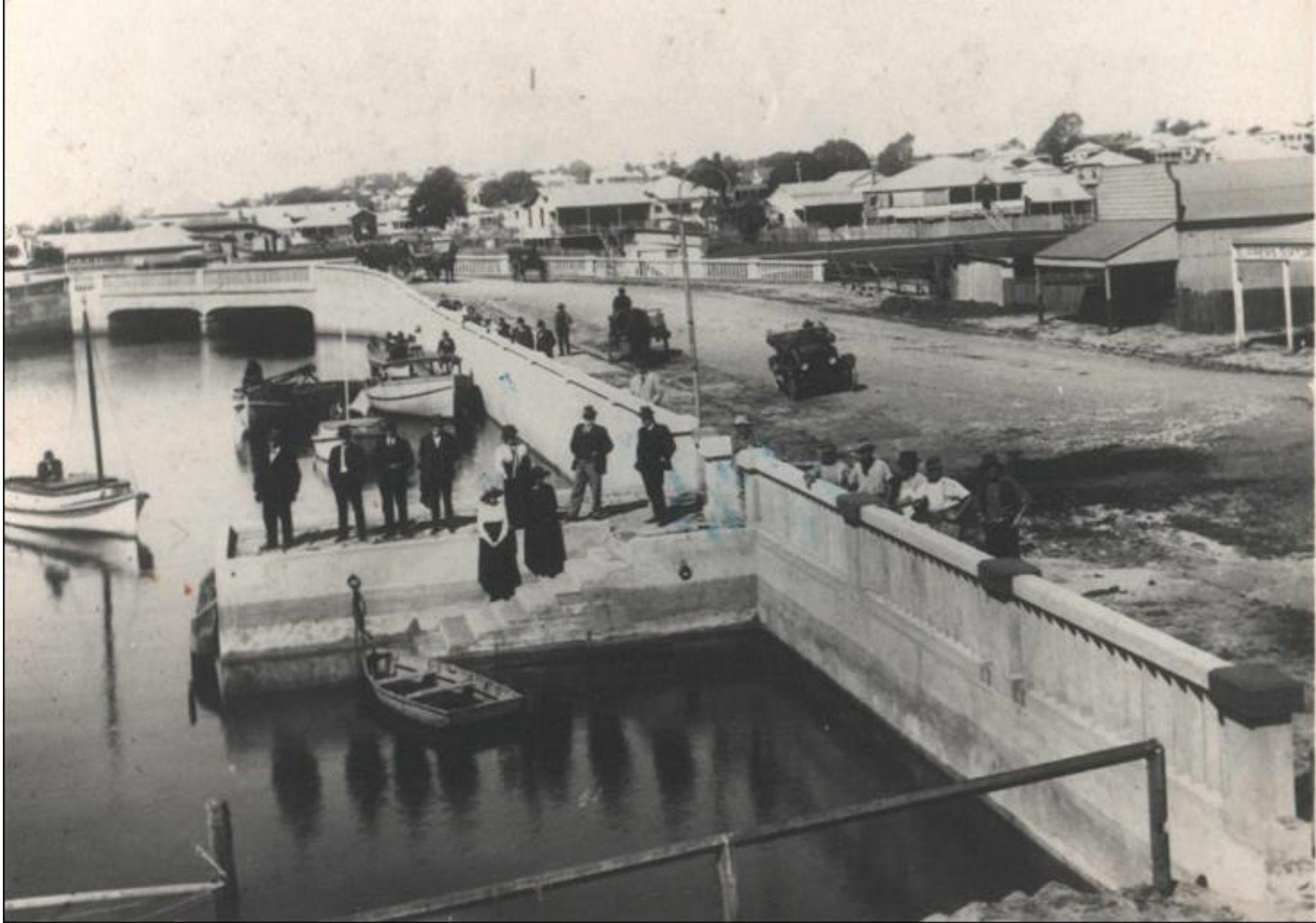
Myrtle Beitz, August 2005



Wynnum – 1900 Photo No 131

Creek – Post Cards - Fox Street Bridge, built 1899, replaced a narrow foot bridge - the shopkeepers of King (Glenora) Street opposed its building fearing loss of trade to rapidly expanding Bay Terrace shops - Kiosk with the eagle on top is visible as is the Reserve later known as Greene Park – many high tides left The Reserve looking like a lake – Greene Park has been a home ground for the Wynnum Sparks vigoro team - photo is taken from the south bank looking north.

Myrtle Beitz, August 2005



Wynnum - 1921 Photo No 133 **Creek** - The second road bridge across Wynnum Creek opened for service by The Hon. J. A. Fihelly, M.L.A. July 1921. photo looking south down Fox Street - the Bridge and adjacent walls were of strong construction taking 4 years to complete. Note the absence of mangroves. *Myrtle Beitz, August 2005*



Wynnum – approx. 1926 Photo No 134 **Beachfront – Events - Parades - Esplanade – Ambulance Parade** heading north past the Imperial Theatre between Florence and Charlotte Streets. Ambulance third in parade was the second vehicle purchased by the committee - 1st was a ford in 1921. Youth gained access to the roof of the double storey grandstand for good view. The large marquee on the left would have been for displays and no doubt the chocolate wheel was used to raise money to support the ambulance service. the truck and other vehicles are using pneumatic tires now in 1926 There is no sign of wading pool and there is growth in trees planted by the council at a much earlier time. *Myrtle Beitz, August 2005*



Wynnum (Old.)—The Fishing Boats.

Heather

1907

(T.H.D. Series)

Wynnum – 1907 Photo No 135

Creek – Industries - South bank of the Wynnum Creek with fishing boats landing their catches with the people ready to buy direct from the fishermen. A substantial wooden retaining wall is in place.

Myrtle Beitz, August 2005

The Wynnum Hotel, Wynnum, Q.



Wynnum – about 1920 Photo No 133 **Buildings – Hotels** - Situated corner Fox and Glenora Streets - Joel Wilde and Matthew Adam originally built a wooden Hotel called the Hastings Hotel in the late 1870s. Many owners including Mr. Fox in 1887-1896 and licensees came before the hotel passed to the Fisher family took over in 1912 and renovated five times with major renovations in 1938. The name of this hotel has changed many times over the years but known the longest as *Fishers Pub* and known at the time of this photo as the Wynnum Hotel. Streets close by bear the names of Wilde and Adam. *Myrtle Beitz, August 2005*



Wynnum – 1930s

Photo No 137

Beachfront - Guns – In 1912 the Wynnum Town Council granted a contract to a local citizen to transport three obsolete cannons from Fort Lytton to be placed near the entrance of each Jetty, No. 1 Wynnum Creek, No 2 near Wading Pool and No 3 at Manly. This cannon No 60756 built in 1800, placed near the Wynnum No 2 Jetty, was taken for restoration in the 1980s and eventually returned to the district and placed near the entrance to the Wynnum Municipal Library away from the damaging salt air.

Myrtle Beitz, August 2005



Wynnum – 1930s Photo No 135

Beachfront –Sport - The ten footers in competition off Wynnum Central Jetty No 2. Our local sailing clubs used a course with a finishing line just off the Jetty Head.

Myrtle Beitz, August 2005

No. 2 Jetty, Wynnum South, Queensland.



Wynnum – 1911 Photo 139 **Beachfront – Jetties – Post Cards** - Strollers on the old wooden Jetty No 2. Steamers landed prospective buyers in 1884 at this new Jetty No 2 for the first East Wynnum Estate auction. No Wading Pool is recorded in this photo as it was not built till 1933. Looks like the Roman Catholic Church built 1905 south of the tall trees. This is one of a series of colour post cards printed in Germany – handwritten on reverse dated 3 August 1911. *Myrtle Beitz, August 2005*



Wynnum – 1932 Photo No 140 **Beachfront – Sport – Events - Esplanade** – the local sailing Club arranged a competition for the opening of the Wading Pool -hundreds of spectators attended this special day.

Myrtle Beitz, August 2004



Wynnum – 1978 Photo No 141

Beachfront - The photographer stood just south of the Wading Pool to show the pleasant grassy and shady areas provided by civic fathers of the past. Many sand garden competitions took place at this area.

Myrtle Beitz, August 2005



Wynnum – 1978 Photo No 142

Beachfront - Esplanade – Beachfront looking south from the Berrima Street corner. footpaths are made, road bitumised gutter to gutter and seating is provided under shade trees. Flinders House in Bay Terrace (Wynnum's first high rise) can be seen in the background to right.

Myrtle Beitz, August 2005



Wynnum – 1978 Photo No 140 **Beachfront –Jetties** - This stone jetty replaced Wynnum Jetty No 2 in George Clayton's term of office as an Alderman (1962-1967). No more tidal baths enjoyed by past generations. This causway forms the southern break wall to Pandanus Beach. Looking south east the photo was taken from T shaped head. Flinders House (Wynnum's first high rise) in Bay Terrace can be seen. *Myrtle Beitz, August 2005*