



Wynnum – post 1910

Photo No 1

Shops - Bay Terrace –Cnr Bay Tce & Florence St looking south about 1911 – first known as Peel’s Corner then Birchley’s (grocery store for many years) - Pavey’s baker’s cart is behind the striped posts of the barber’s shop with the State Butchery’s shop run by Samuel Thomas Burrows later became Phillips butchers on the corner - Grass shoulders with gravel road – only three cross bars on telegraph poles - near horse’s head is Craig and Browns grocery store.

See also Photo Nos 4,17,23,27,29,30,32,167 (looking south)

Myrtle Beitz, August 2005



Wynnum – post 1910 Photo No 2

Bay Terrace - looking north – Posts near tall tree denote Pine Street – A man is looking over Mr McMinn's (Member of Parliament) fence – Guardian Angels Church, built in 1904 is next on right – the horse and trap travels in middle of road – telephone poles have four cross bars now – earlier photos do not show telegraph poles.

Myrtle Beitz, August 2005



Wynnum – about 1920 Photo No 3

Shops - Bay Terrace –corner Florence Street - railway side of Bay Terrace looking south west - Birchley's Corner– notice the kitchen ware, pots and pans, dishes, galvanized bins, brooms etc on display on footpath - Uhlmann's butcher shop adjoins.

See also No 23 *Myrtle Beitz, August 2005*



Wynnum – 1904 Photo No 4

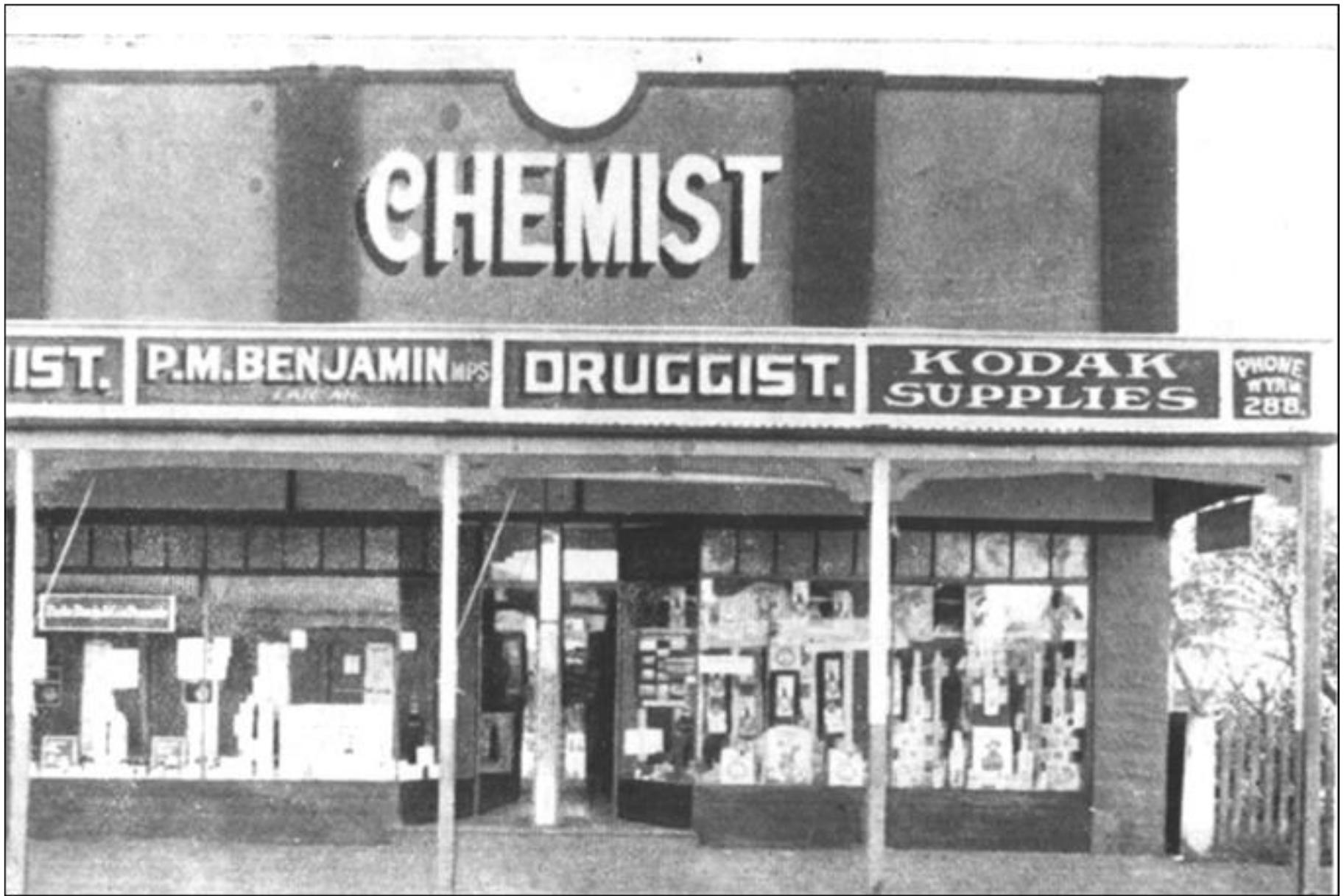
Churches – Buildings - Bay Terrace - beach side, between Pine and Chestnut Streets – Fr Corrigan represented His Grace Archbishop Dunne when the blessing of the foundation stone was laid in December 1904 of this Guardian Angels' Church, to the design of architect Richard Gailey. *Myrtle Beitz, August 2005*



Wynnum – 1920 or earlier Photo No 5

Bay Terrace - Transport - - beach side between Florence and Edith Streets – The Store “W. Moore’s Refreshment Rooms” was later Reid’s cake shop - a classic home made cart - notice the iron wheels and the absence of springs.

Myrtle Beitz, August 2005



Wynnum – about 1920 Photo No 6

Shops - Bay Terrace –seaward side between Florence and Edith Streets– Phil Benjamin was a returned soldier from World War I who trained in the field of medicine but switched to pharmacy. The woodman next door supplied wood for customers for cooking and heating. *Myrtle Beitz, August 2005*



Wynnum - 1910 Photo No 7

Shops - Bay Terrace –railway side, between Charlotte and Bride Streets – First store opened 1887 – (Commonwealth Stores) Irvine’s Store eventually covered whole block providing complete shopping requirements. Notice the formal dress code for men and women.

See also Nos 8,31,32,33,213,214,215

Myrtle Beitz, August 2005



Wynnum – about 1922 Photo No 8

Shops - Bay Terrace –railway side, between Charlotte and Bride Streets – first store known as the Commonwealth Stores opened in 1897 – this photo taken after final expansion around 1922 – people on footpath most probable the staff out for the photograph – notice the flying of both Union Jack and Australian Flags - three generations of the Irvine family traded at this store for 70 years. The business was sold to Hartley's in 1966. Subdivision took place of the store in 1970 and finally the 87-year-old building was demolished and replaced by a large building housing a government department. See also Nos 7,31,32,33,213,214,215 *Myrtle Beitz, August 2005*



Wynnum – 1930s Photo No 9

Bay Terrace – Services – Post – Buildings - corner Clara Street railway side is the second Post office– prior to 1901, state governments controlled postal deliveries from the railway stations – the first post office was a converted home on the Bride Street side of Irvine's store in Bay Terrace and this second building built in 1921 served until 1994 as post office and manual telephone exchange - automation took place 1955 – the third post office was transferred to Edith Street in 1994. After relocation to Edith Street this building became the venue for Wynnum X-Rays

See also Photo No 22 *Myrtle Beitz, August 2005*



Wynnum Photo No 10

Events - Bay Terrace – unknown Band marching south in Bay Terrace across Edith Street corner for an unknown occasion at an unknown time *Myrtle Beitz, August 2005*



Wynnum - 1930s Photo No 11

Events - Bay Terrace –between Florence and Charlotte Streets - Rose of Wynnum Oddfellows Lodge travelling in unidentified parade south in front of Moreton Bay College - trees planted in 1901 showing growth – note Albion truck with its iron and solid rubber tyres. *Myrtle Beitz, August 2005*

Wynnum-Manly history snippet



EVERYONE loves a parade. The photographer captured the Rose of Wynnum Oddfellows Lodge travelling down Bay Tee in the 1930s.

The early spring parade would have terminated at Memorial Park.

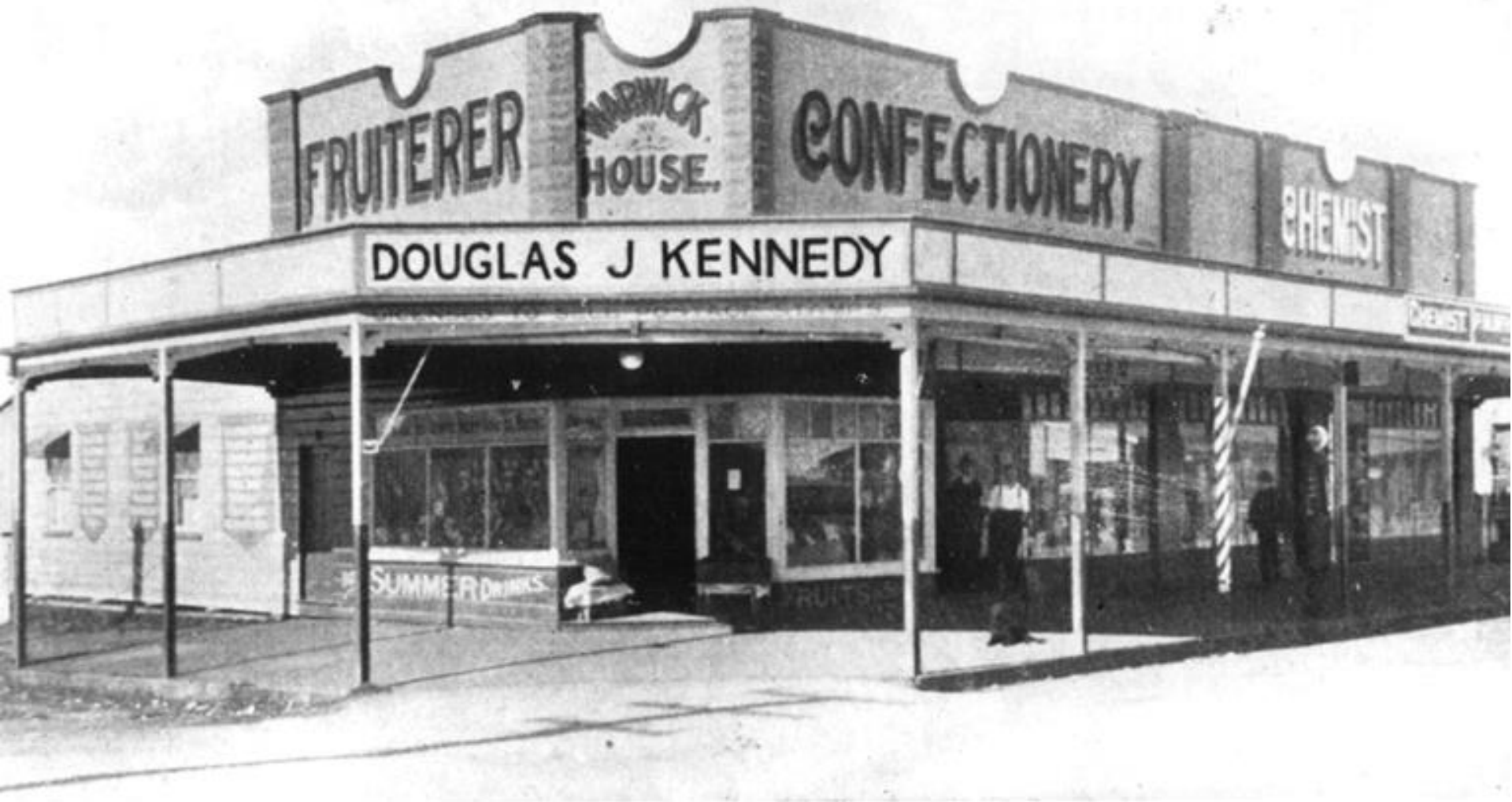
The Albion truck with its iron and solid tyres was typical of transport trucks of those times. It was very likely the property of Hargreaves Jam Factory in Manly Rd, The Springs.

The footpath trees in front of Moreton Bay

Girls School are showing many years' growth since their planting in 1901.

Note parade participants also were wearing suitable headgear for the Queensland climate.

The Wynnum Manly Historical Society provided this local history snippet. The society meets on the third Thursday of each month on the ground floor of the old ambulance building at 33 Tingal Rd, Wynnum, and welcomes new members.



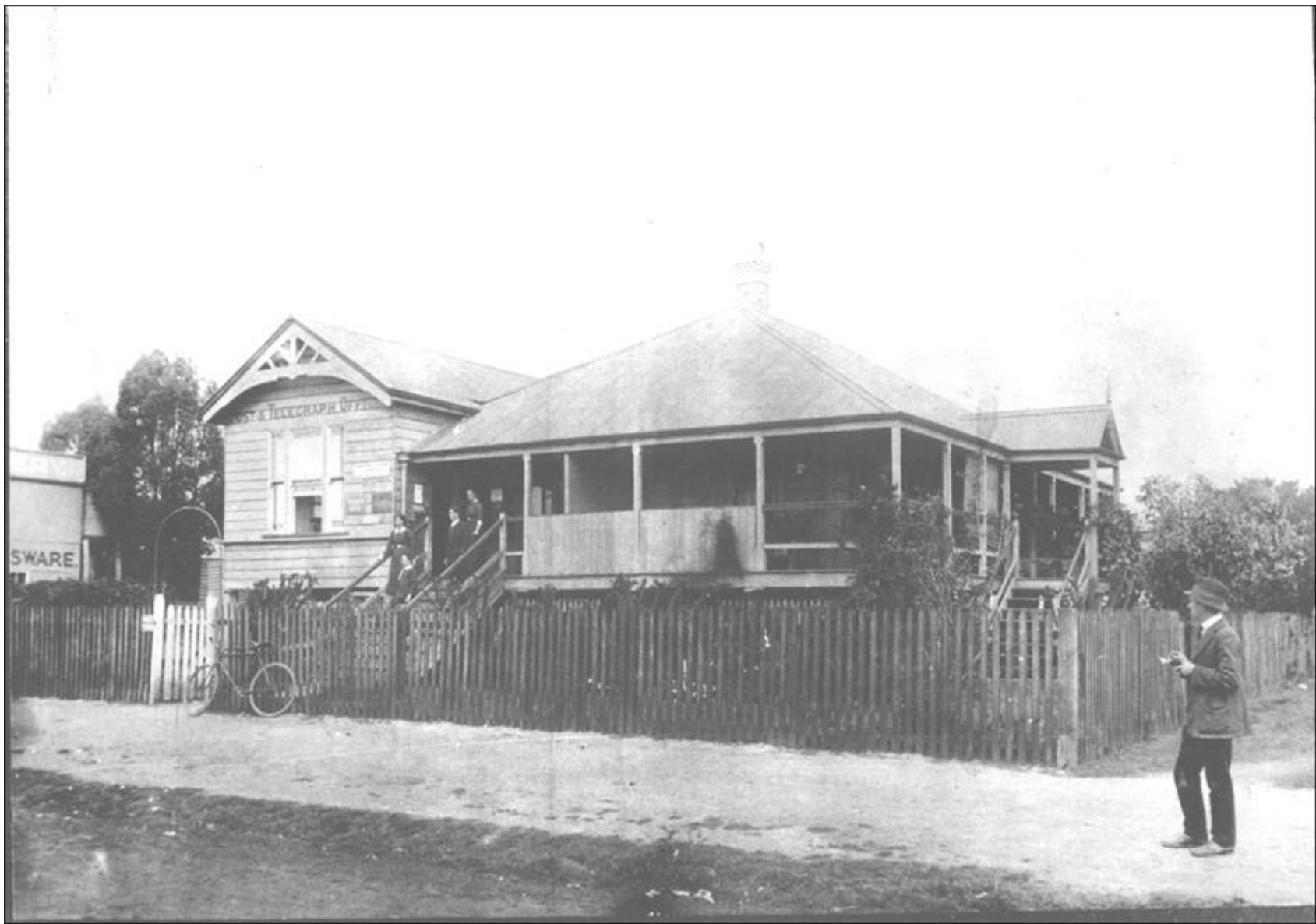
Wynnum – 1920 Photo No 13

Shops - Bay Terrace –beach side corner of Florence Street - Douglas J. Kennedy ran the fruit and confectionary next door to Benjamin's chemist – his father Tom Kennedy was the barber next door, note the striped barber's pole – in latter years he moved his barbering shop to the rear of this block in Florence Street – both Tom Kennedy and Phil Benjamin were returned soldiers from World War 1. *Myrtle Beitz, August 2005*



Wynnum - 1920s Photo No 14

Bay Terrace - Boarding Houses - Buildings - northern corner on beach side of Bay Terrace and Charlotte Street– popular *Ingleston Guest House* was built some time between 1900 and 1905 and run by Mr & Mrs Patterson and boasted its own small jetty and bathing enclosure. The first lawn tennis court was there for the patrons' use. It was very popular in the 1920s and 1930s with holiday makers and honeymooners and once played host to Mrs Aeneas Gunn author of *We of the never-never* and some school teachers were also known to board there. One time proprietress M.H. Johnson advertised the establishment as being *Home away from Home, cuisine the best and terms moderate*. The building was destroyed by fire in 1946 and in 1977 the *Wynnum Civic Centre and Library* was erected on the site. See also Photo No 24 *Myrtle Beitz, August 2005*



Wynnum – 1911 Photo No 14

Services – Post - Bay Terrace –railway side of Bay Terrace and next door to Irvine’s between Charlotte and Bride Streets. This was the first Post Office. Prior to 1901 postal deliveries were controlled by the State Govt. from local Railway Stations. Postmistress Mrs Goodyear, Virgil Maguire Assistant, Dossie Geddes (Mrs. Banks) telephonist and youth Joe Walmsley, telegram messenger boy, later known as the whistling postman are standing on steps for photographer. The second post office was built on the corner of Bay Terrace and Clara Street in 1921.

Myrtle Beitz, August 2005



Wynnum – 1920s Photo No 16

Shops - Bay Terrace –Mr O’Brien occupied this store on the beachside corner of Bay Terrace and Florence Street just before World War I, then Mr Saunders, Mr Blaine (in photo) then Mr Senden then the Hepburn family – later at one time Strand Shoes

Myrtle Beitz, August 2005



Wynnum –1920s Photo No 17

Buildings – Shops – Bay Terrace –This little newsagent's shop with residence behind conducted by F. Barton was situated on the railway side of Bay Terrace between Clara and Chestnut Streets. Other operators were Mrs Simmonds, and Grace Waldron. The eye catching side window displayed an electric train in motion at Christmas to delight children in the 1930s. The Wynnum Telephone exchange building is on this site. The small building was shifted to Lota on the corner Hind Street and Whites Road to operate as a general store. *Myrtle Beitz, August 2005*



Wynnum Photo No 18

Events - Bay Terrace –railway side of Bay Terrace between Florence and Edith Streets. Travelling north this Victory Parade after World War I is passing Uhlmann's butcher's shop. The large camphor laurel tree is in grounds of house owned by Mr & Mrs Finlay. See also Photo Nos 1,23,27,29,39,32,167 (looking south)

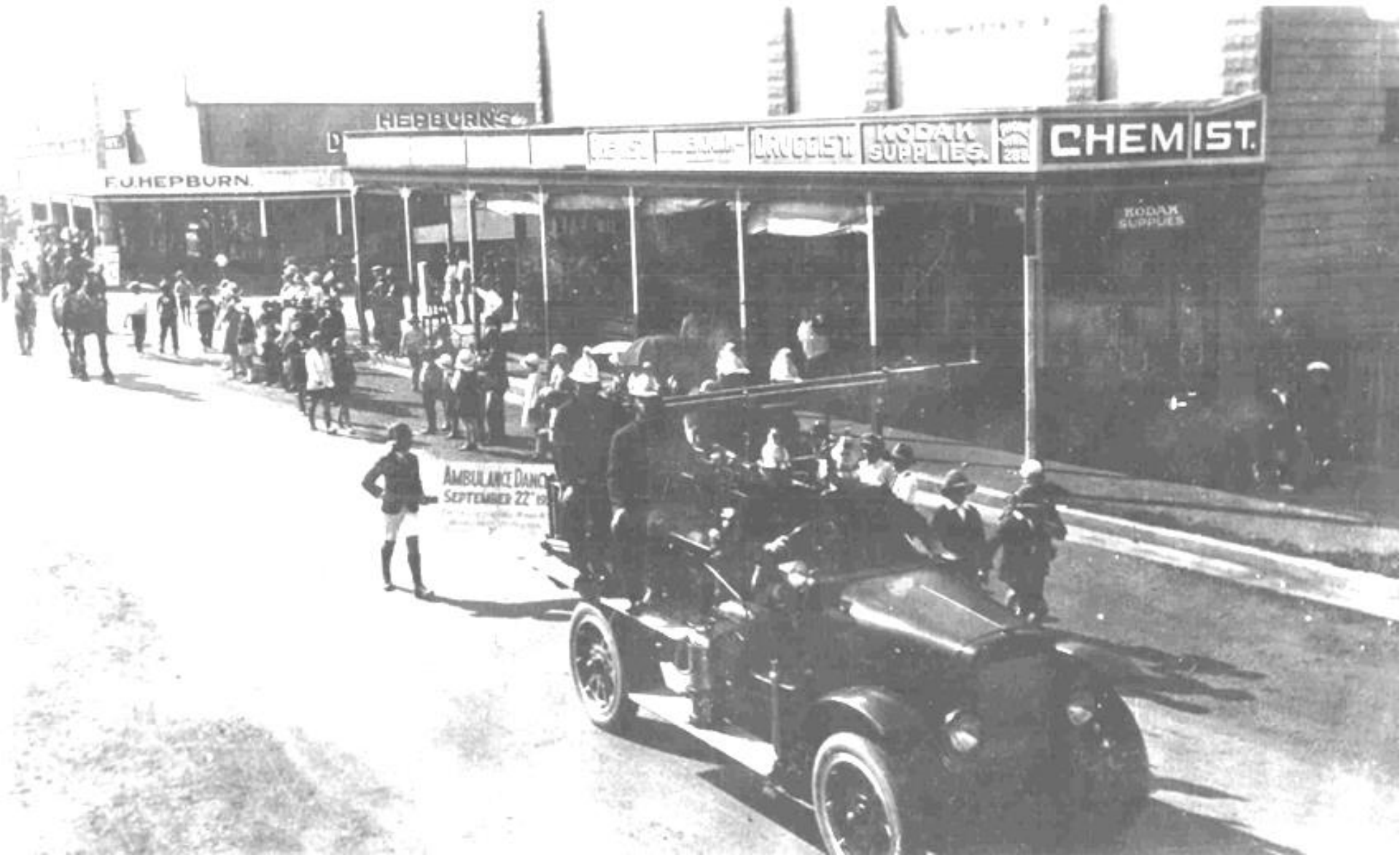
Wynnum – 1919 *Myrtle Beitz, August 2005*



Wynnnum – about 1920 Photo No 19 **Local Authority - Buildings – Bay Terrace** –The School of Arts is on the railway side in Bay Terrace between Pine and Cedar Streets. The building was completed in 1913 – Wynnnum Manly School of Arts Show Committee conducted Horticultural Shows here before going to Russell Park (Memorial Park) in 1919 – for many years this building was the central meeting place for many activities such as dances, balls, clubs, lodges, public displays, church meetings etc - The Library was operated by Miss Croft in a ground floor room behind the steps near the gas light shown in foreground. The Library was relocated to the Civic Centre when it was built in 1977. See also Photo No 25 *Myrtle Beitz, August 2005*



Wynnum – about 1903 Photo No 20 **Jetties - Beachfront** –looking from Bay Terrace towards the beach from most probably Clara Street corner - the flat ground towards the beach was known as *The Reserve* and was popular with campers - a pipe ran from the small dam in the foreground to an underground brick lined tank holding some 10,000 gallons of water situated in mid Florence Street – this was the water supply for the early campers - in dry periods locals used this to water their stock. This very early photo shows the Jetty with a primitive swimming enclosure on the southern side. Mr Keating built this jetty when bringing prospective buyers to his East Wynnum Estate Sales. Wynnum No 2 Jetty was later built to the north. This swimming enclosure and the second jetty and swimming enclosure is shown in a cadastral map of 1903. The building could be Wynnum House an early boarding house. *Myrtle Beitz, August 2005*



Wynnum – 1928 Photo No 21

Events - Bay Terrace –Spring Parade showing Fire Engine travelling south in Bay Terrace in front of Benjamin’s which is on the beach side between Florence and Edith Streets. Other familiar business names of that period F.J. Hepburns, haberdashery, A.E. Giles, House and Land agent. (father of Alf Giles, G&B Motors). Occasion unknown

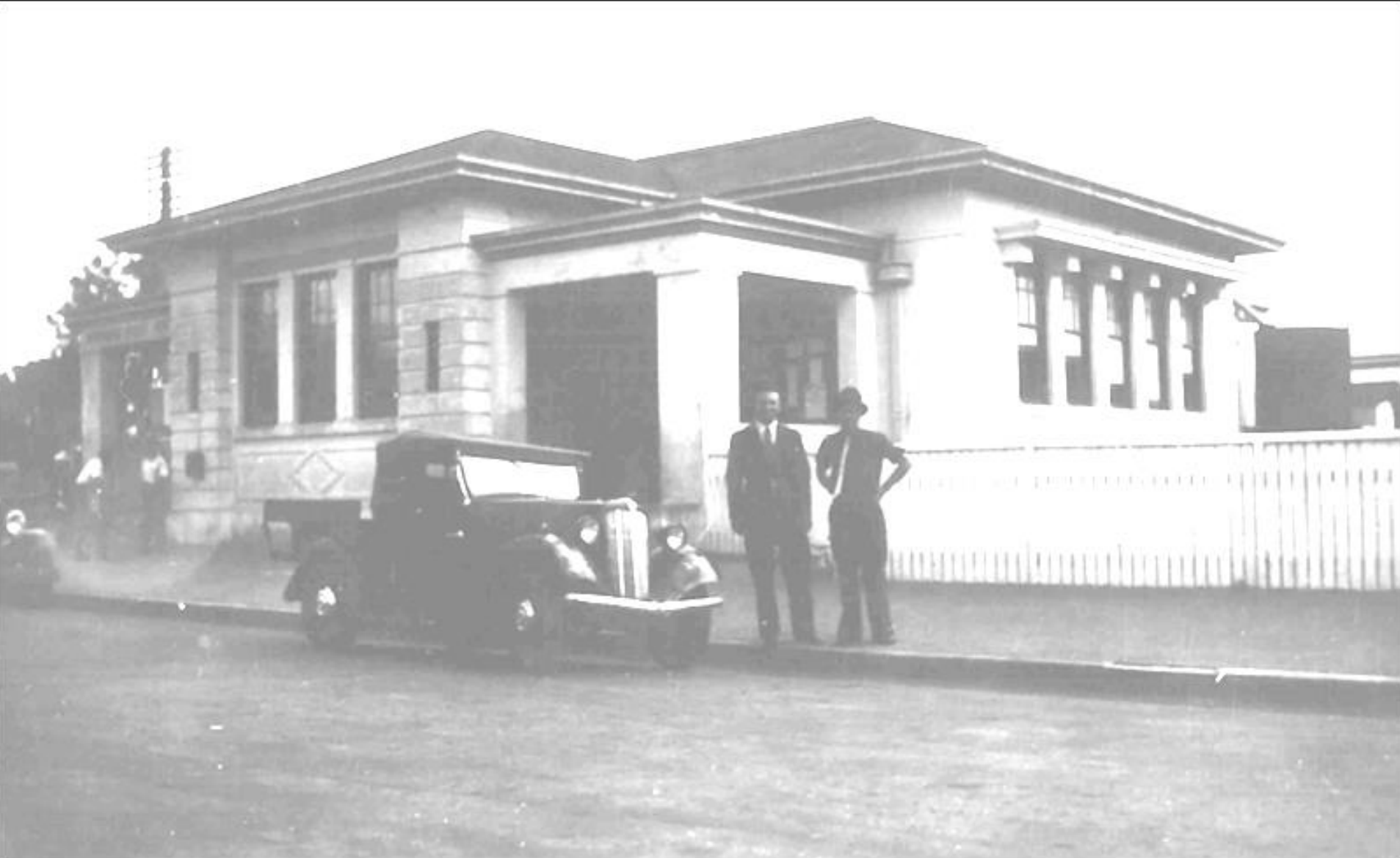
Myrtle Beitz, August 2005



Wynnum – 1928 Photo No 22

Shops – Bay Terrace – This shop is on the beachside of Bay Terrace between Florence and Charlotte Streets. Ernie S. Knox first occupied in 1910, Little & Co extended to a brick building, sold to Charlie Mills, Snr. in 1944, then Bayard's before Stevens traded. Charlie Mills relocated in Bay Terrace between Edith Street and Clara Street - BMD developed the site into a residential complex in 2004.

Myrtle Beitz, August 2005



Wynnum – 1928 Photo No 23

Services – Postal - Bay Terrace –Second Post Office was built in 1921 and is situated on the railway side of Bay Terrace between Edith and Clara Streets. Window of one of the two public telephone boxes can be seen above the roof of the utility. A 400 line series multiple magneto manual telephone exchange was established in the right-hand side of the building. In 1994 Australia Post was transferred to a new building in Edith Street after 71 years of occupancy. Wynnum X-Rays then occupied the ‘Old Post Office building’. See also Photo No 9

Myrtle Beitz, August 2005



Wynnum – 1900-1915 Photo No 24 **Boarding Houses - Buildings – Bay Terrace** – corner Bay Terrace and Charlotte Street (beach side, northern corner) - Construction of Ingleston Guest House well under way - very popular in the 1920s and 1930s with holiday makers and honeymooners - this guest house run by Mr & Mrs Patterson boasted its own small jetty and bathing enclosure - at one time M.H. Johnson was Proprietress - destroyed by fire in 1946 - area now site of Civic Centre.

Wynnum Civic Centre and Library erected on site 1977 –See also Photo No 13

Myrtle Beitz, August 2005



Wynnum – 1930s Photo No 25

Bay Terrace - Shops – Photo shows Birchley's Corner on the corner of Bay Terrace and Florence Street. Utility is travelling south. Changes since earlier photos show the tree in Mr Finlay's and large one near Pine Street are gone. Telephone cross bars also gone. See also Photo Nos. 1,17,27,29,39,32,167 (looking south)

Myrtle Beitz, August 2005



Wynnum – 1913 Photo No 26 **Local Authority – Buildings - Bay Terrace** –corner Bay Terrace and Walnut Street (railway and northern side) - workmen pose for photographer at completion of School of Arts - early District Horticultural Shows were held here before moving to Russell Park (Memorial Park) in 1918 – for many years this building was the central meeting place for dances, balls, clubs, public displays, church meetings etc. – The first Library operated by Miss Croft was in a ground floor room closest to Walnut Street behind steps. Library was relocated when the Civic Centre was built in 1977. See also Photo No 18 *Myrtle Beitz, August 2005*



Wynnum – 1930s Photo No 27

Shops - Bay Terrace –looking north – Commonwealth Bank on Corner Clara Street (beach side) opposite Post office – second car at petrol station – Purr Pull and Texaco oils were common trade names - tanks of cars were gravity fed from a glass bowl to which petrol was pumped - Queensland was last the state to introduce electric pumps.

Myrtle Beitz, August 2005

A Main Street, Wynnum South, Q.



Wynnum— 1920s Photo No 28 **Shops - Bay Terrace**—looking south from Florence Street corner showing a large increase in the number of telephone lines, supported by 10 cross bars, (so me earlier photos show only 3) - pole to left is supporting a gas light - Peel's fruit and vegetable shop (beach side) is opposite Birchley's store - northern corner on beach side is still a private home - other corner has a butcher's shop under the control of the State Butchers with Samuel Burrows as manager in 1933. The business was sold to Mr Burrows and later to Mr Phillips. A barber's shop was next door – no gutters and grass sidings are shown to the gravel road. See also Photo Nos 1,4,17,23,29,39,32,167 (looking south) *Myrtle Beitz, August 2005*



Wynnum – Bay Terrace – 1930s Photo No 29 **Transport - Shops – Bay Terrace** - looking north - Photographer standing between Florence Street and Edith Street - two goat power has taken its place among some early traffic - a mix of Baby Austins in middle of street and outside Benjamin's - single-seater roadsters with a 'Dickey seat' were popular, one with a Registration of Q44583 - horse drawn vehicles were still a means of transport. See also Photo Nos 2,26,34,48 (looking north). *Myrtle Beitz, August 2005*



Wynnum – 1919 Photo No 30

Transport - Events - Bay Terrace –looking south – Victory Parade passing Birchley’s Florence Street Corner - Children dressed in white for peace are driven in front wagon by top hated driver also in white - local Constable wearing a ‘tiger shooter’ on his ‘Allday & Onions’ bike escorts the parade (a bike was introduced in 1918 for police transport, previous mode of transport for a police man was by horse or by foot) - large camphor laurel tree stands in the grounds of the Finlay home, between Edith and Florence Streets.

See also Photo Nos 1,17,23,27,39,32,167 (looking south) *Myrtle Beitz, August 2005*



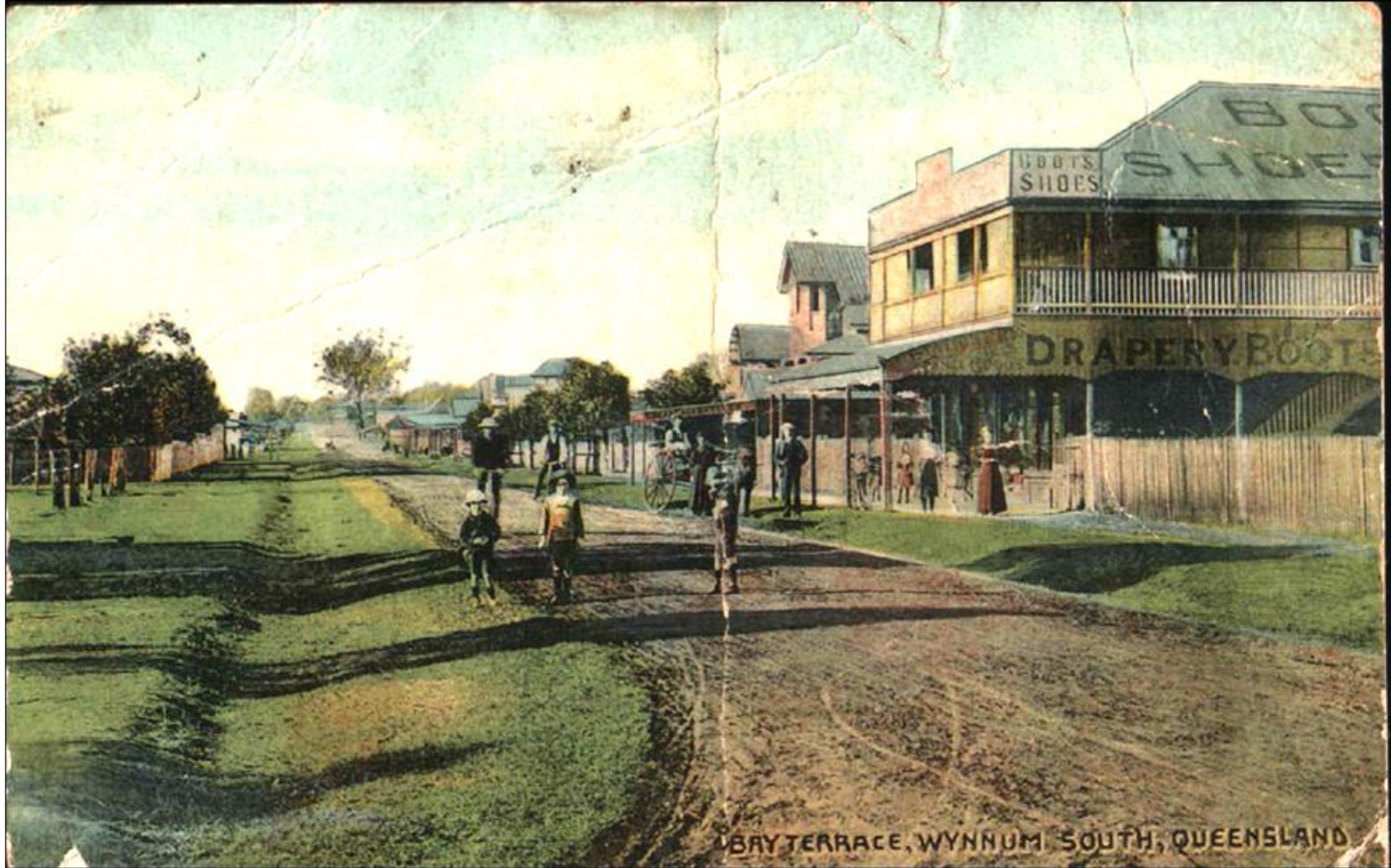
Wynnum – 1926 Photo No 31

Transport - Shops – Bay Terrace –looking south from corner of Charlotte Street - Trundling down the Terrace comes Mr & Mrs Argæet’s Pioneer Bus established 1925 - Camphor laurel trees outside Moreton Bay College have been lopped - above gentleman’s head is Jack Little’s brick building which replaced Knox’s Drapery in 1926 - business sold to Charlie Mills & Sons in 1944 then Bayards who sold to Stevens
see also Photo Nos 1,17,23,27,29,32,167 (looking south)

Myrtle Beitz, August 2005



Wynnum – 1910 Photo No 31 **Post Cards – Shops - Bay Terrace** –Irvine’s business was established in 1887 and came to Wynnum to open the first store build in Bay Terrace - the Commonwealth Store, which opened its doors in 1897 - careful study show a house which would be towards the Charlotte Street corner - by 1922 the family bought all property to Charlotte Street and extended this shop to become a large emporium – this is one of many post cards Irvines had printed in Germany. See also Photo Nos 7,8,32,33,213.214,215 (Irvines) *Myrtle Beitz, August 2005*



Wynnum – 1910 Photo No 33 **Shops - Post Cards – Bay Terrace** –looking south – note the grassy shoulders of the gravel road. Moreton Bay College was built (1901). A butcher occupied a shop next to Irvine’s on corner Charlotte Street (behind the horse and cart) - further up the street a water tank can be seen.

One of many post cards Irvines had printed in Germany

See Also Photo Nos 7,8,31,33,213,214,215 (Irvines) Nos 1,17,23,27,29,30,167 (looking south) *Myrtle Beitz, August 2005*



BAY TERRACE, WYNNUM, QUEENSLAND

Wynnum – 1910 Photo No 33 **Shops - Bay Terrace** - showing H.A. Irvine & Sons est 1887 - Commonwealth Store, opened 1897. Mr. H.A. Irvine left Ireland for Australia in 1882 - by year 1910 a small butcher's shop was on the Charlotte Street corner and Moreton Bay College had been established for nine years. For 70 years the Irvine family managed and owned this first store in Bay Terrace. The modern self-service shopping and monopolies forced Sam and Bert Irvine to sell the business to Hartley's in 1966. Subdivision took place in 1970 and in 1984 the 87 year old building was demolished to be replaced by a government building. One of many post cards Irvines had printed in Germany See also Photo Nos 7 8 31 32 213 214 215 (Irvines) *Myrtle Reitz August 2005*



Wynnum – 1910 Photo No 35 (same as 208)

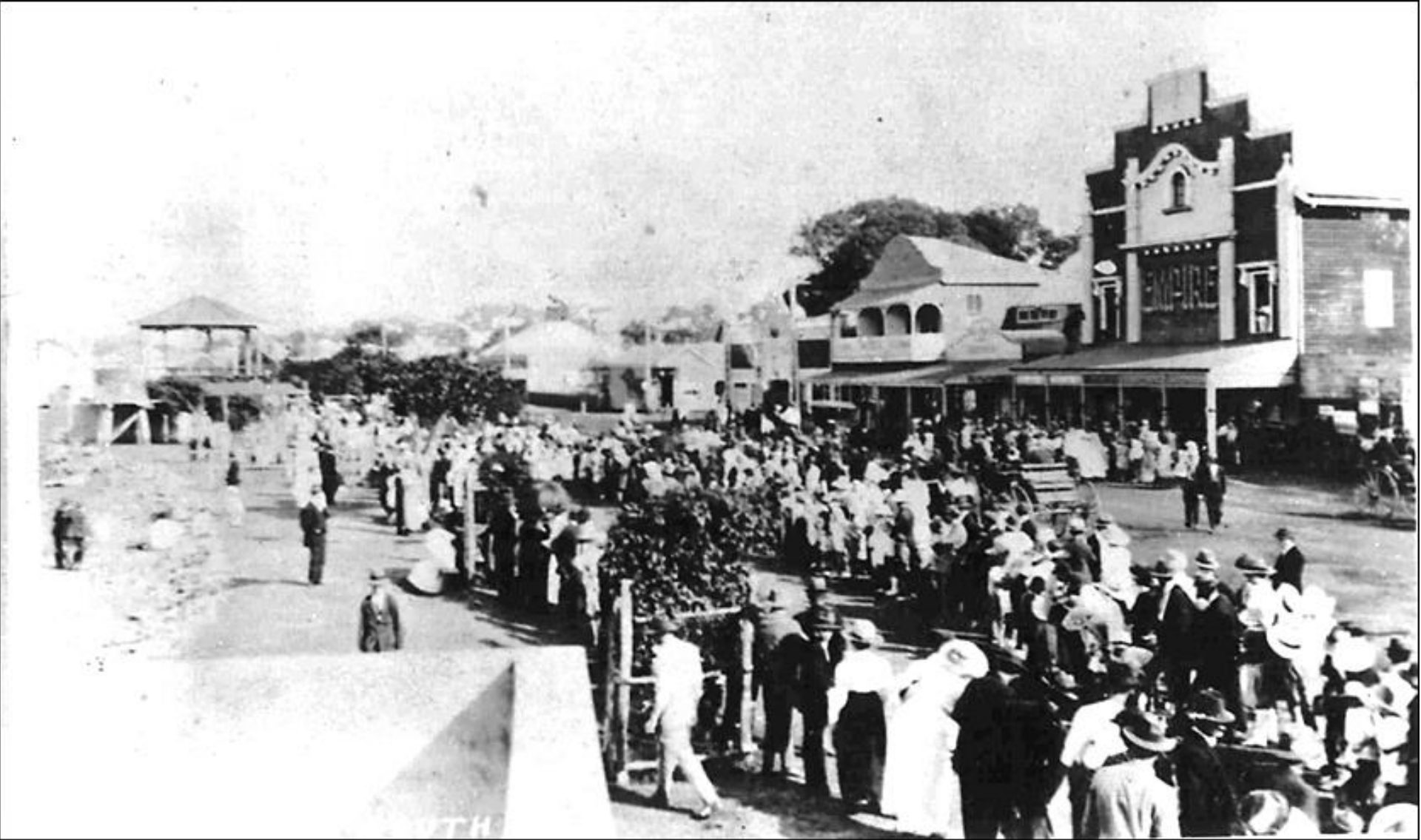
Terrace –looking north - photo could have been taken from upper floor of Irvine's Commonwealth Stores - house at end of Bay Terrace is facing Berrima Street - this and other post cards were printed in Germany before 1911.

Post Cards - Bay See other Photo Nos 2,26,28,48.(looking north)

Myrtle Beitz, August 2005



Wynnum – 1933 Photo No 36 **Events - Beachfront** –The Courier Mail conducted Sand Garden Competitions from Bundaberg to the beaches of the Gold Coast at this time - Grand finals were conducted at selected beaches each Christmas holiday - Gold watches given as prizes attracted competitors – here sand was brought to the Esplanade for the event, other times they were conducted below the sea wall *Myrtle Beitz, Aug 2005*



Wynnum – 1915-16 Photo No 37

Theatres - Events – Beachfront –Spectators watching a Parade between Florence and Charlotte Streets -- Empire Theatre with Major’s café to the right - Empire Theatre was burnt down in 1922 - tree guards protect the young shady trees of today - double storied bandstand to the left was built in 1912. *Myrtle Beitz, August 2005*



Wynnum –1930s Photo No 38

Events - Beachfront –Sand garden competition – location south of Wading Pool between Clara and Chestnut Streets - this year was not held on foreshore but sand was imported to the promenade - the shop with “Sitrus” sign would have offered cool drinks, boiling water and fishing needs etc to day trippers and holiday makers.

Myrtle Beitz, August 2005



Wynnum – 1930s Photo No 39

Beachfront – Events - Sand garden competition conducted by Courier Mail held on Esplanade this year as sand had been imported to be placed between two parallel planks - these competitions created great interest with spectators who were conscious of protection from the sun - tree guards around the small pine trees.

Myrtle Beitz, August 2005



Wynnum – 1920s Photo No 39 **Jetties - Schools – Beachfront** –looks like this photo is that of a school swimming class at Tidal Baths Jetty No 2 - at one time there were three tidal baths built before the turn of the century - at high tide the baths could be up to 10 feet deep - Jetty No 1 was north of Wynnum Creek built 1889 with a swimming enclosure added in 1891- No. 2 at foot of Florence Street was built before 1884 to enable steamers to land prospective land buyers for the East Wynnum Estate auction and No 3 at Manly was built 1897. *Myrtle Beitz, August 2005*